

(ROCKY1.ROCKY) 18032
ROCKY ONE DEPARTURE

AL-203 (FAA)

INDIANAPOLIS INTL (IND)
 INDIANAPOLIS, INDIANA

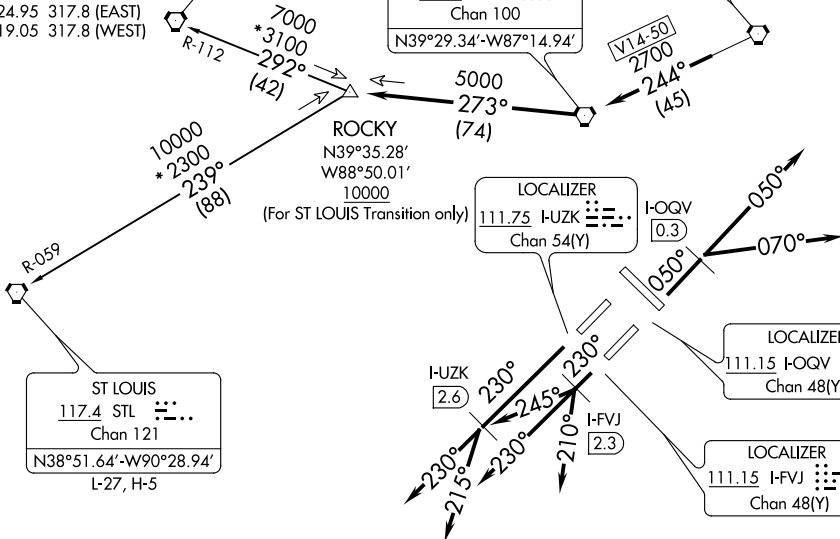
D-ATIS
 134.25
 CLNC DEL
 128.75 257.8
 CPDLC
 GND CON
 121.9
 INDY TOWER
 120.9 257.8
 INDIANAPOLIS DEP CON
 124.95 317.8 (EAST)
 119.05 317.8 (WEST)

TOP ALTITUDE:
(JETS) 5000
(PROPS) 3000

SPINNER
 112.7 SPI
 Chan 74
 N39°50.38'-W89°40.66'
 L-27, H-5

TERRE HAUTE
 115.3 TTH
 Chan 100
 N39°29.34'-W87°14.94'

BRICKYARD
 116.3 VHP
 Chan 110



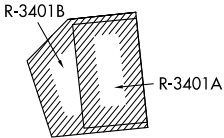
ROCKY
 N39°35.28'
 W88°50.01'
 10000
 (For ST LOUIS Transition only)

ST LOUIS
 117.4 STL
 Chan 121
 N38°51.64'-W90°28.94'
 L-27, H-5

LOCALIZER
 111.75 I-UZK
 Chan 54(Y)

LOCALIZER
 111.15 I-OQV
 Chan 48(Y)

LOCALIZER
 111.15 I-FVJ
 Chan 48(Y)



TAKEOFF MINIMUMS
 Rwy 5L/R, 14, 23L/R, 32: Standard.

- NOTE: RADAR required.
- NOTE: Select appropriate localizer/DME frequency/channel prior to departure.
- NOTE: Turbojets accelerate to 250K until reaching 10000, if unable advise ATC.
- NOTE: Assigned to aircraft with a requested altitude of 11000 or above.

(NARRATIVE ON FOLLOWING PAGE)

NOTE: Chart not to scale.

(ROCKY1.ROCKY) 01FEB18

INDIANAPOLIS, INDIANA
 INDIANAPOLIS INTL (IND)

EC-2, 25 MAR 2021 to 22 APR 2021

EC-2, 25 MAR 2021 to 22 APR 2021



DEPARTURE ROUTE DESCRIPTION

TAKEOFF RWY 5R (TURBOJETS ONLY-DME Required): Climb on heading 050° to I-OQV 0.3 DME, then on assigned heading 050° or 070°. Maintain 5000.
Thence

TAKEOFF RWY 23R (TURBOJETS ONLY-DME Required): Climb on heading 230° to I-UZK 2.6 DME, then on assigned heading 230° or 215°. Maintain 5000.
Thence

TAKEOFF RWY 23L (TURBOJETS ONLY-DME Required): Climb on heading 230° to I-FVJ 2.3 DME, then on assigned heading 210°, 230°, or 245°. Maintain 5000.
Thence

TAKEOFF ALL OTHER RUNWAYS (TURBOJETS ONLY): Climb on assigned heading. Maintain 5000. Thence

TAKEOFF ALL RUNWAYS (PROPELLER ONLY): Climb on assigned heading. Maintain 3000. Thence

DEPARTING ALL OTHER AUTHORIZED RUNWAYS: Climb on assigned heading to assigned altitude. Thence

. . . . expect RADAR vectors to join VHP R-244 to TTH VORTAC, then via TTH R-273 to ROCKY INT then via transition or assigned route. Expect clearance to requested altitude ten minutes after departure.

SPINNER TRANSITION (ROCKY1.SPI): From over ROCKY INT on SPI R-112 to SPI VORTAC.
ST LOUIS TRANSITION (ROCKY1.STL): From over ROCKY INT on STL R-059 to STL VORTAC.

EC-2, 25 MAR 2021 to 22 APR 2021

EC-2, 25 MAR 2021 to 22 APR 2021