


APP CRS	Rwy Idg	10000
230°	TDZE	790
	Apt Elev	796

RNAV (RNP) Z RWY 23L

INDIANAPOLIS INTL (IND)

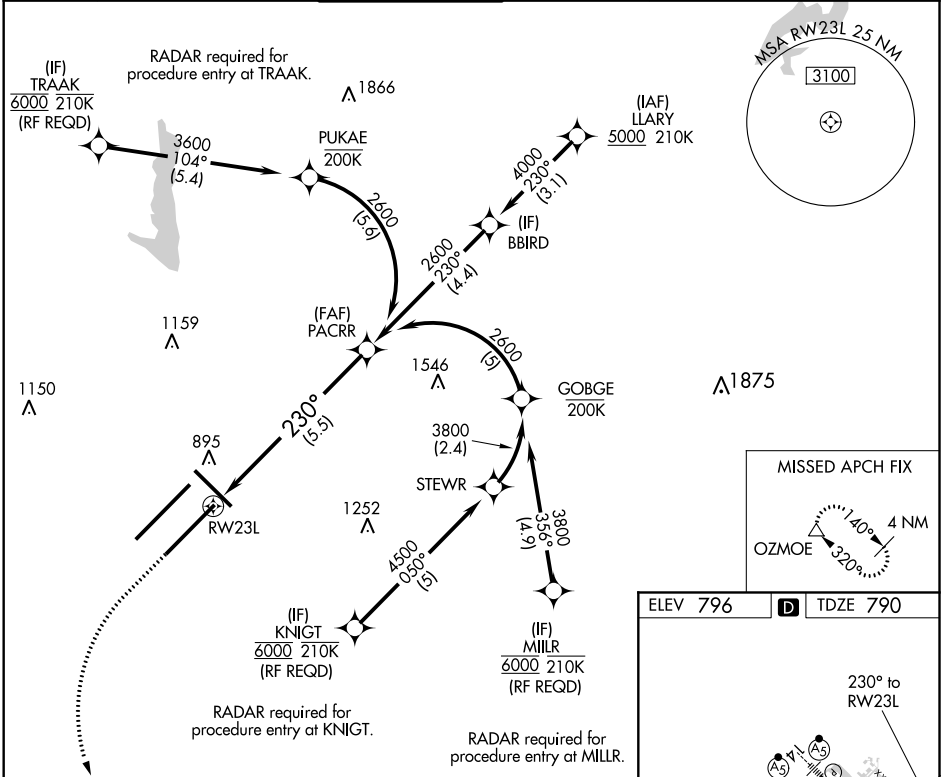
RNP AR APCH.


▼ For uncompensated Baro-VNAV systems, procedure NA below -18°C or above 54°C. Simultaneous approach authorized for arrivals from LLARY only. GPS required.

MALSR 

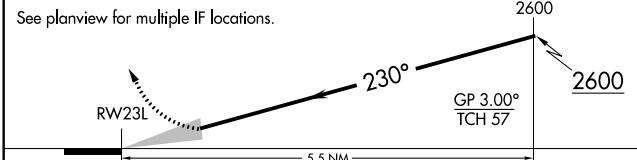
MISSED APPROACH: Climb to 1500, then climbing left turn to 3000 direct OZMOE and hold.

D-ATIS 134.25	INDIANAPOLIS APP CON 128.175 317.8	INDY TOWER 120.9 257.8	GND CON 121.9	CLNC DEL 128.75 257.8	CPDLC
-------------------------	--	----------------------------------	-------------------------	---------------------------------	-------



1500 3000 OZMOE 

VGSI and RNAV glidepath not coincident (VGSI Angle 3.00/TCH 75).



ELEV 796 **D** TDZE 790

230° to RWY 23L

TWR 110.6

HIRL all Rwys
TDZ/CL Rwys 5L and 5R

CATEGORY	A	B	C	D
RNP 0.30 DA	1163/40		373 (400-¾)	

AUTHORIZATION REQUIRED

EC-2, 25 MAR 2021 to 22 APR 2021

EC-2, 25 MAR 2021 to 22 APR 2021