


WAAS CH <b>77706</b> <b>W23B</b>	APP CRS <b>230°</b>	Rwy Idg <b>11200</b> TDZE <b>783</b> Apt Elev <b>796</b>
--	------------------------	--

# RNAV (GPS) Y RWY 23R

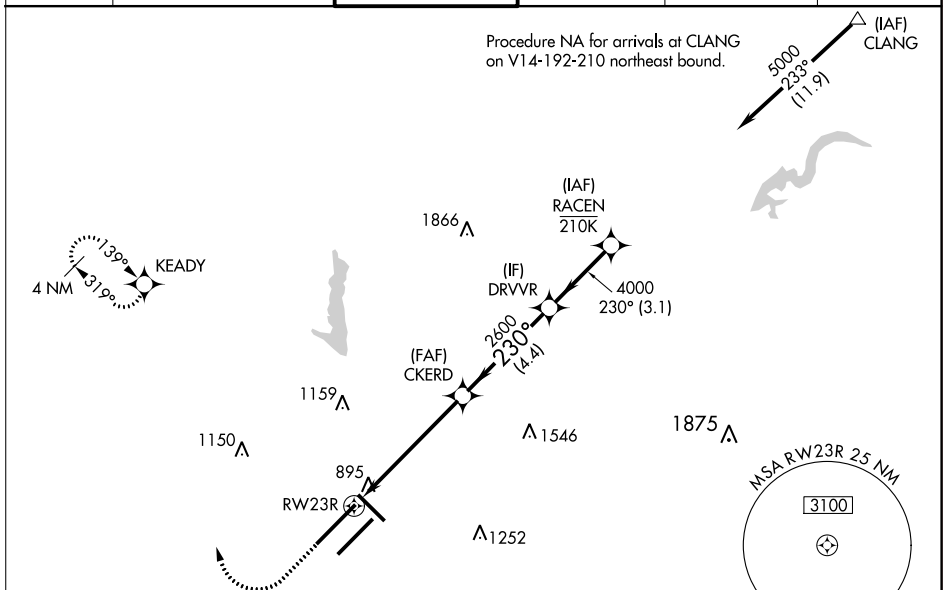
INDIANAPOLIS INTL (IND)

For uncompensated Baro-VNAV systems, LNAV/VNAV NA below -18°C (0°F) or above 54°C (130°F). DME/DME RNP-0.3 NA. For inoperative ALS, increase LNAV Cat C/D visibility to RVR 6000. Simultaneous approach authorized. LNAV procedure NA during simultaneous operations. Use of FD or AP providing RNAV track guidance required during simultaneous operations.  
**\*\* RVR 1800 authorized with use of FD or AP or HUD to DA.**

**MAISR**  


**MISSED APPROACH:**  
 Climb to 1500 then climbing right turn to 3000 direct KEADY and hold.

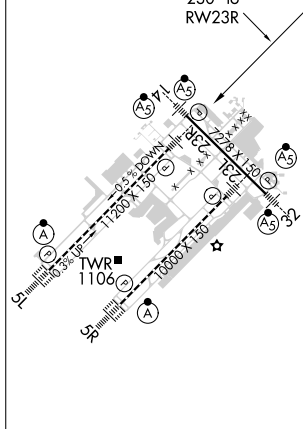
D-ATIS <b>134.25</b>	INDIANAPOLIS APP CON <b>128.175 317.8</b>	INDY TOWER <b>120.9 257.8</b>	GND CON <b>121.9</b>	CLNC DEL <b>128.75 257.8</b>	CPDLC
-------------------------	--	----------------------------------	-------------------------	---------------------------------	-------



EC-2, 25 MAR 2021 to 22 APR 2021

EC-2, 25 MAR 2021 to 22 APR 2021

ELEV 796	<b>D</b>	TDZE 783
----------	----------	----------



1500	3000	KEADY	VGSI and RNAV glidepath not coincident (VGSI Angle 3.00/TCH 71).	
*LNAV only		CKERD	DRVVR	RACEN
*1.1 NM to RWY23R		2600	4000	5000
RWY23R		2600	4000	GP 3.00° TCH 55
1.1 NM		4.4 NM	4.4 NM	3.1 NM
CATEGORY	A	B	C	D
LPV DA	**983/24		200 (200-½)	
LNAV/VNAV DA	1165/40		382 (400-¾)	
LNAV MDA	1200/24	417 (500-½)	1200/40	417 (500-¾)
<b>C</b> CIRCLING	1420-1	624 (700-1)	1420-1¾ 624 (700-1¾)	1560-2½ 764 (800-2½)

HIRL all Rwys  
 TDZ/CL Rwys 5L and 5R