

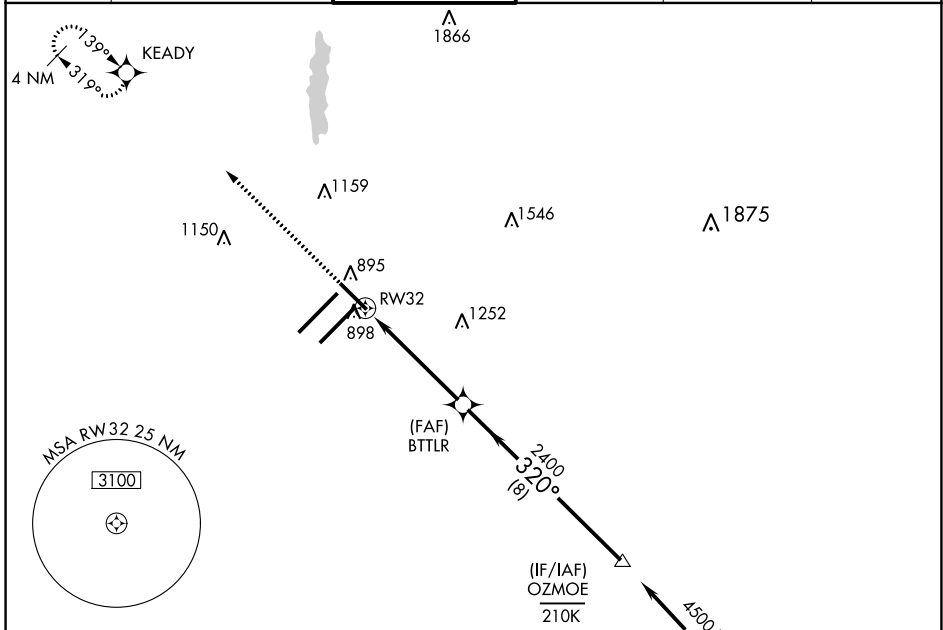
WAAS CH 62802 W32A	APP CRS 320°	Rwy Idg 7278 TDZE 793 Apt Elev 796
--	------------------------	---

RNAV (GPS) Y RWY 32

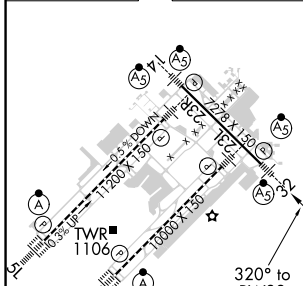
INDIANAPOLIS INTL (IND)

<p>⚠ For uncompensated Baro-VNAV systems, LNAV/VNAV NA below -18°C (0°F) or above 54°C (130°F). ⚠ DME/DME RNP-0.3 NA. **RVR 1800 authorized with use of FD or AP or HUD to DA.</p>	<p>MALSR </p>	<p>MISSED APPROACH: Climb to 3000 direct KEADY and hold.</p>
---	--------------------	--

D-ATIS 134.25	INDIANAPOLIS APP CON 128.175 317.8	INDY TOWER 120.9 257.8	GND CON 121.9	CLNC DEL 128.75 257.8	CPDLC
-------------------------	--	----------------------------------	-------------------------	---------------------------------	-------

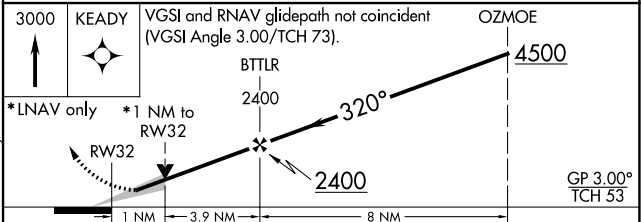


ELEV 796	D TDZE 793
----------	-------------------



HIRL all Rwys TDZ/CL Rwys 5L and 5R
--

Procedure NA for arrivals at DECEE on V128 southeast bound.



CATEGORY	A	B	C	D
LPV DA	**993/24		200 (200-½)	
LNAV/VNAV DA	1069/24		276 (300-½)	
LNAV MDA	1160/24 367 (400-½)		1160/35 367 (400-¾)	
C CIRCLING	1420-1 624 (700-1)		1420-1¾ 624 (700-1¾) 1560-2½ 764 (800-2½)	

EC-2, 25 MAR 2021 to 22 APR 2021

EC-2, 25 MAR 2021 to 22 APR 2021