

**TOP ALTITUDE:  
ASSIGNED BY ATC**

D-ATIS  
120.0 254.3  
CLNC DEL  
125.0 379.1  
GND CON  
121.9 348.6  
EL PASO TOWER  
118.3 239.275  
EL PASO DEP CON  
119.15 263.0  
ALBUQUERQUE CENTER  
135.875 292.15

**TAKEOFF MINIMUMS**  
Rwys 4, 8R, 22, 26L: Standard with a minimum climb  
of 500' per NM to 11000.



CHISUM  
CME

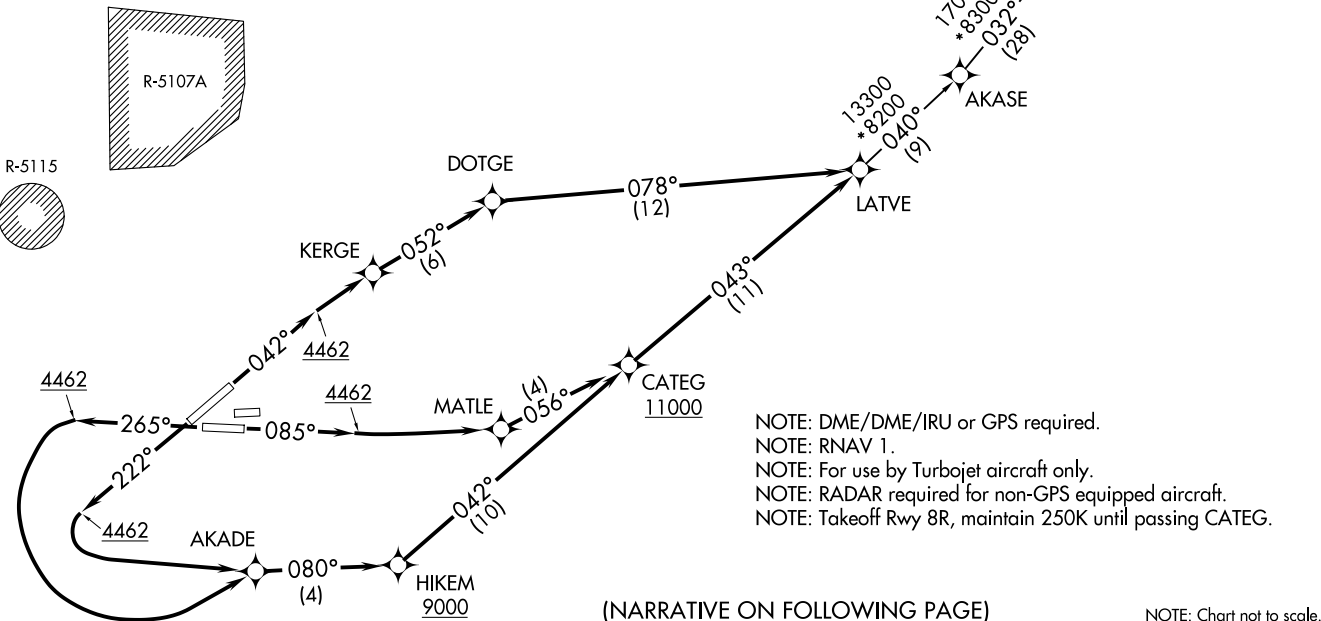
(LATV3.LATV) 20030  
LATV THREE DEPARTURE (RNAV)

AL-134 (FAA)

EL PASO INTL (E1LP)  
EL PASO, TEXAS

LATV THREE DEPARTURE (RNAV)  
(LATV3.LATV) 21JUL16

EL PASO, TEXAS  
EL PASO INTL (E1LP)



NOTE: DME/DME/IRU or GPS required.  
NOTE: RNAV 1.  
NOTE: For use by Turbojet aircraft only.  
NOTE: RADAR required for non-GPS equipped aircraft.  
NOTE: Takeoff Rwy 8R, maintain 250K until passing CATEG.

(NARRATIVE ON FOLLOWING PAGE)

NOTE: Chart not to scale.



DEPARTURE ROUTE DESCRIPTION

TAKEOFF RWY 4: Climb heading 042° to 4462, then direct KERGE, then on track 052° to DOTGE, then on track 078° to LATVE. Thence. . . .

TAKEOFF RWY 8R: Climb heading 085° to 4462, then direct MATLE, then on track 056° to cross CATEG at or above 11000, then on track 043° to LATVE. Thence. . . .

TAKEOFF RWY 22: Climb heading 222° to 4462, then left turn direct AKADE, then on track 080° to cross HIKEM at or above 9000, then on track 042° to cross CATEG at or above 11000, then on track 043° to LATVE. Thence. . . .

TAKEOFF RWY 26L: Climb heading 265° to 4462, then left turn direct AKADE, then on track 080° to cross HIKEM at or above 9000, then on track 042° to cross CATEG at or above 11000, then on track 043° to LATVE. Thence. . . .

. . . .on depicted route to CME VORTAC.

CHISUM TRANSITION (LATVE3.CME)

SC-3, 22 APR 2021 to 20 MAY 2021

SC-3, 22 APR 2021 to 20 MAY 2021