

NEVUE THREE DEPARTURE(RNAV)
(NEVUES,NEVUE) 21JUL16

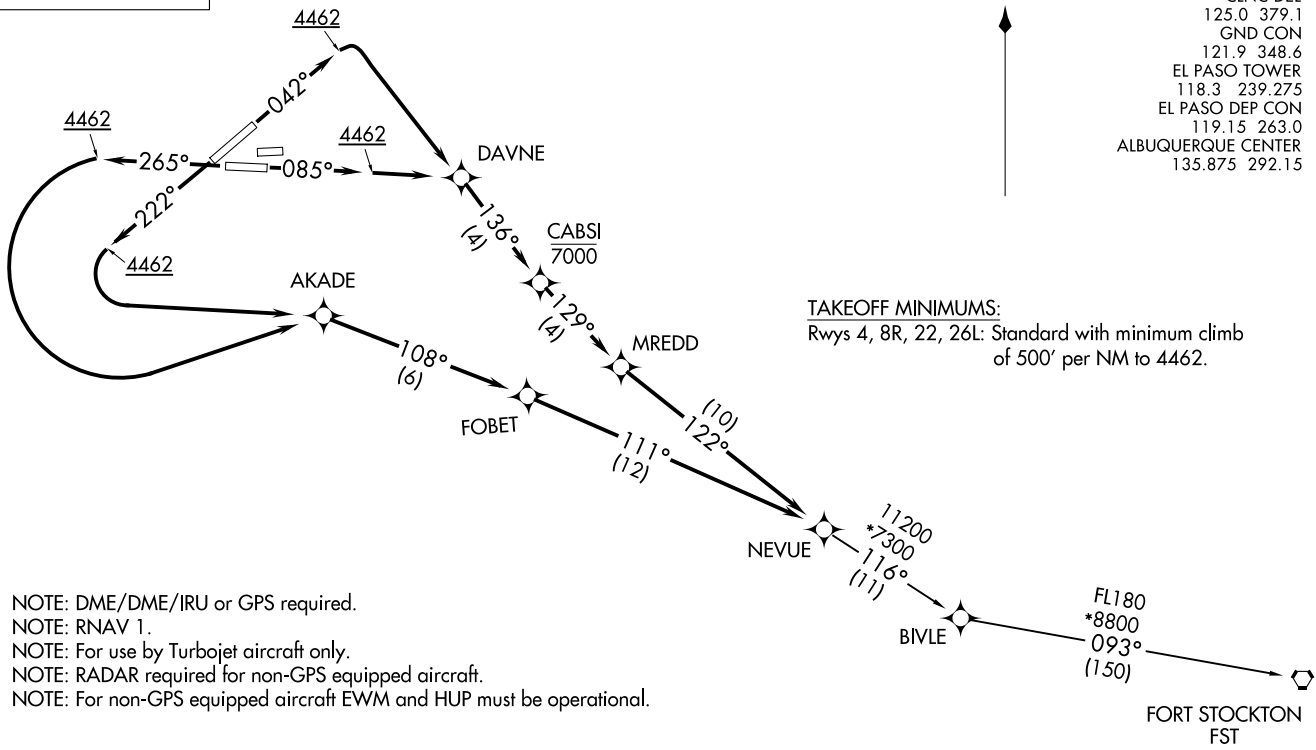
(NEVUES,NEVUE) 1803Z
NEVUE THREE DEPARTURE(RNAV)

AL-134 (FAA)

EL PASO INTL (EILP)
EL PASO, TEXAS

TOP ALTITUDE:
Assigned by ATC

D-ATIS
 120.0 254.3
 CLNC DEL
 125.0 379.1
 GND CON
 121.9 348.6
 EL PASO TOWER
 118.3 239.275
 EL PASO DEP CON
 119.15 263.0
 ALBUQUERQUE CENTER
 135.875 292.15



TAKEOFF MINIMUMS:
 Rwy's 4, 8R, 22, 26L: Standard with minimum climb
 of 500' per NM to 4462.

- NOTE: DME/DME/IRU or GPS required.
- NOTE: RNAV 1.
- NOTE: For use by Turbojet aircraft only.
- NOTE: RADAR required for non-GPS equipped aircraft.
- NOTE: For non-GPS equipped aircraft EWM and HUP must be operational.

NOTE: Chart not to scale.

(NARRATIVE ON FOLLOWING PAGE)

EL PASO, TEXAS
EL PASO INTL (EILP)

NEVUE THREE DEPARTURE (RNAV)



DEPARTURE ROUTE DESCRIPTION

TAKEOFF RWY 4: Climb heading 042° to 4462, then right turn direct DAVNE, then on track 136° to cross CABSI at or below 7000, then on track 129° to MREDD, then on track 122° to NEUVE. Thence. . . .

TAKEOFF RWY 8R: Climb heading 085° to 4462, then direct DAVNE, then on track 136° to cross CABSI at or below 7000, then on track 129° to MREDD, then on track 122° to NEUVE. Thence. . . .

TAKEOFF RWY 22: Climb heading 222° to 4462, then left turn direct AKADE, then on track 108° to FOBET, then on track 111° to NEVUE. Thence. . . .

TAKEOFF RWY 26L: Climb heading 265° to 4462, then left turn direct AKADE, then on track 108° to FOBET, then on track 111° to NEVUE. Thence. . . .

. . . .on depicted route to FST VORTAC.

FT STOCKTON TRANSITION (NEVUE3.FST)

SC-3, 22 APR 2021 to 20 MAY 2021

SC-3, 22 APR 2021 to 20 MAY 2021