

# RNAV (GPS) Y RWY 22

EL PASO INTL (ELP)

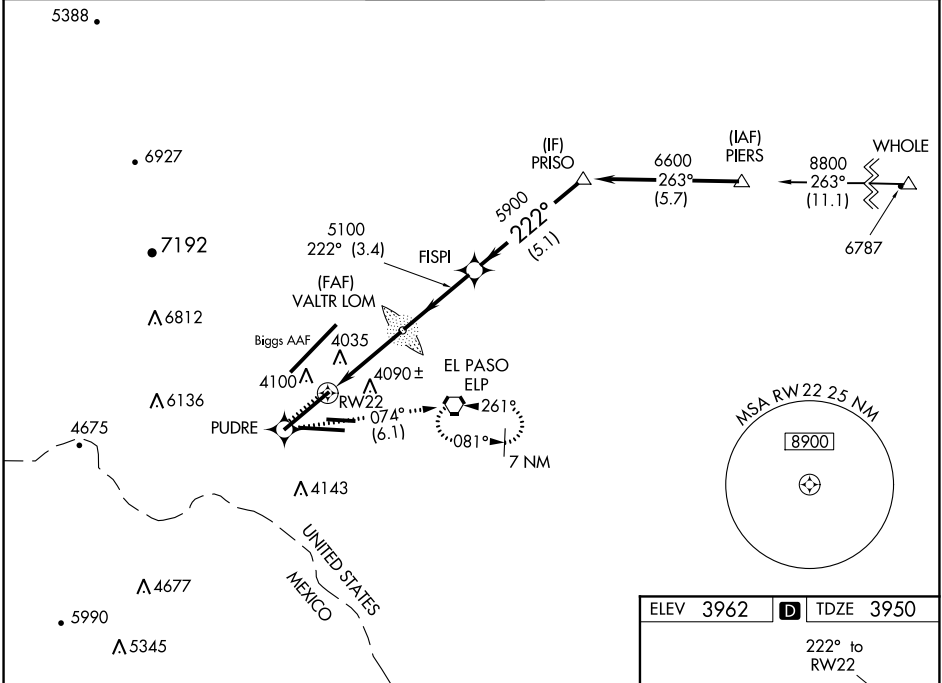
APP CRS <b>222°</b>	Rwy Idg TDZE <b>3950</b>	<b>12020</b>
	Apt Elev <b>3962</b>	

RNP APCH.  
**ASR** Circling NA for Cat D north of Rwy 26R and northwest of Rwy 4. For uncompensated Baro-VNAV systems, LNAV/VNAV NA below -9°C or above 54°C.  
 For inop ALS increase LNAV/VNAV Cat D visibility to RVR 5000 and LNAV Cat C/D visibility to RVR 5500.

MALS R

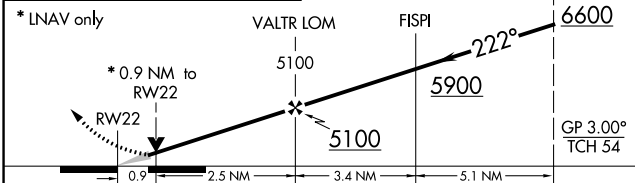
MISSED APPROACH: Climb to 4600 direct PUDRE and climbing left turn to 6900 on track 074° to ELP VORTAC and hold.

D-ATIS <b>120.0 254.3</b>	EL PASO APP CON <b>124.25 298.85</b>	EL PASO TOWER <b>118.3 239.275</b>	GND CON <b>121.9 348.6</b>	CLNC DEL <b>125.0 379.1</b>
------------------------------	---	---------------------------------------	-------------------------------	--------------------------------

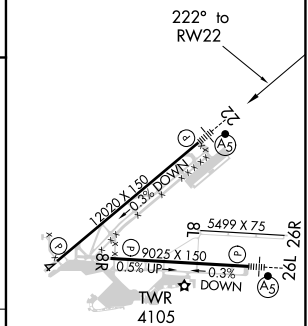


4600 PUDRE 6900 ELP  
 ↑ \* 074° ↘

VGSI and RNAV glidepath not coincident (VGSI Angle 3.00/TCH 70).



ELEV 3962	<b>D</b> TDZE 3950
-----------	--------------------



CATEGORY	A	B	C	D
LNAV/VNAV DA	4274/26 324 (400-½)			4274/40 324 (400-¾)
LNAV MDA	4300/24 350 (400-½)		4300/30 350 (400-¾)	4300/50 350 (400-1)
<b>C</b> CIRCLING	4420-1 458 (500-1)	4440-1 478 (500-1)	4460-1½ 498 (500-1½)	4480-2¼ 718 (800-2¼)

MIRL Rwy 8L-26R  
 REIL Rwy 4 and 8R  
 HIRL Rwy 4-22 and 8R-26L

SC-3, 22 APR 2021 to 20 MAY 2021

SC-3, 22 APR 2021 to 20 MAY 2021