

SAMMR THREE ARRIVAL (RNAV)

SC-3, 22 APR 2021 to 20 MAY 2021

ARRIVAL ROUTE DESCRIPTION

CHISUM TRANSITION (CME.SAMMR3)

LIFFT TRANSITION (LIFFT.SAMMR3)

From SAMMR on track 260° to SARRT, cross SARRT at 8000 at 210K, expect RNAV (RNP) approach or RADAR vectors to final approach course.

EL PASO D-ATIS
120.0 254.3
EL PASO APP CON
124.25 298.85
ALBUQUERQUE CENTER
135.87 292.15

CHISUM
CME

13000
*8100
207°
(45)

RIICK

13000
*8900
203°
(18)

ZIPPI

13000
*8200
(21)

BGBND

9000
*8900
212°
(13)

BLYSS
14000
13000

9000
*8000
*8000
231°
(12)

SAMMR
10000
9000

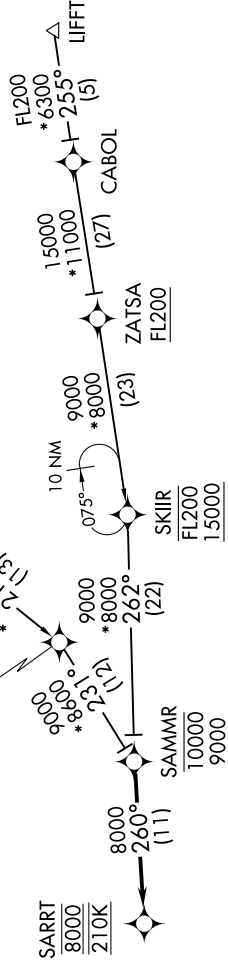
8000
260°
(11)

SARRT
8000
210K



N

NOTE: RADAR required.
NOTE: RNAV 1.
NOTE: DME/DME/IRU or GPS required.
NOTE: Turbojet aircraft only.
NOTE: Expect RNP approach or radar vectors to final approach course prior to SARRT.



NOTE: Chart not to scale.

SC-3, 22 APR 2021 to 20 MAY 2021

SAMMR THREE ARRIVAL (RNAV)