

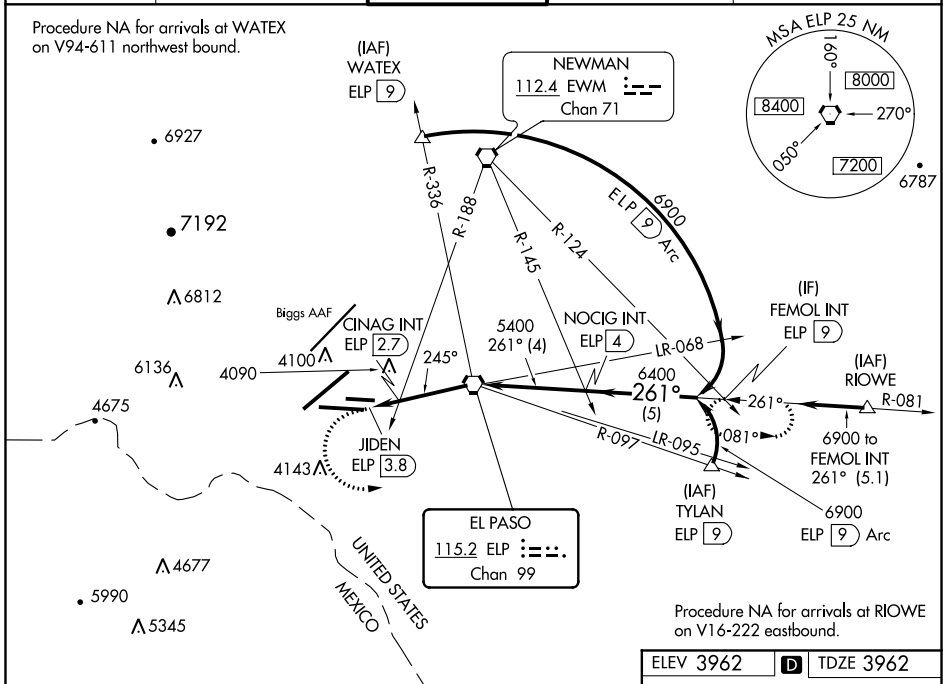
VORTAC ELP 115.2 Chan 99	APP CRS 245°	Rwy Idg TDZE Apt Elev 9025 3962 3962
--	------------------------	--

VOR RWY 26L

EL PASO INTL (ELP)

Circling NA for Cat D and E west of Rwy 4-22. ASR	MALS R	MISSED APPROACH: Climb to 4500 then climbing left turn to 7100 on heading 050° and on ELP VORTAC R-081 to FEMOL INT/9 DME and hold.		

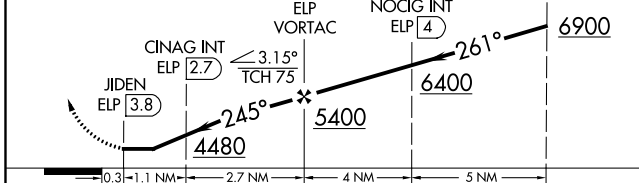
D-ATIS 120.0 254.3	EL PASO APP CON 124.25 298.85	EL PASO TOWER 118.3 239.275	GND CON 121.9 348.6	CLNC DEL 125.0 379.1
------------------------------	---	---------------------------------------	-------------------------------	--------------------------------



SC-3, 22 APR 2021 to 20 MAY 2021

SC-3, 22 APR 2021 to 20 MAY 2021

4500	7100	ELP R-081	FEMOL INT
		hdg 050°	



CATEGORY	A	B	C	D	E
S-26L	4480-1	518 (600-1)	4480-1 $\frac{3}{8}$	518 (600-1 $\frac{3}{8}$)	
CIRCLING	4480-1	518 (600-1)	4480-1 $\frac{1}{2}$	4680-2	4700-2 $\frac{1}{2}$
CINAG FIX MINIMUMS (DUAL VOR RECEIVERS OR DME REQUIRED)					
S-26L	4340-1 378 (400-1)				
CIRCLING	4420-1 458 (500-1)	4440-1 478 (500-1)	4460-1 $\frac{1}{2}$ 498 (500-1 $\frac{1}{2}$)	4680-2 $\frac{1}{4}$ 718 (800-2 $\frac{1}{4}$)	4700-2 $\frac{1}{2}$ 738 (800-2 $\frac{1}{2}$)

