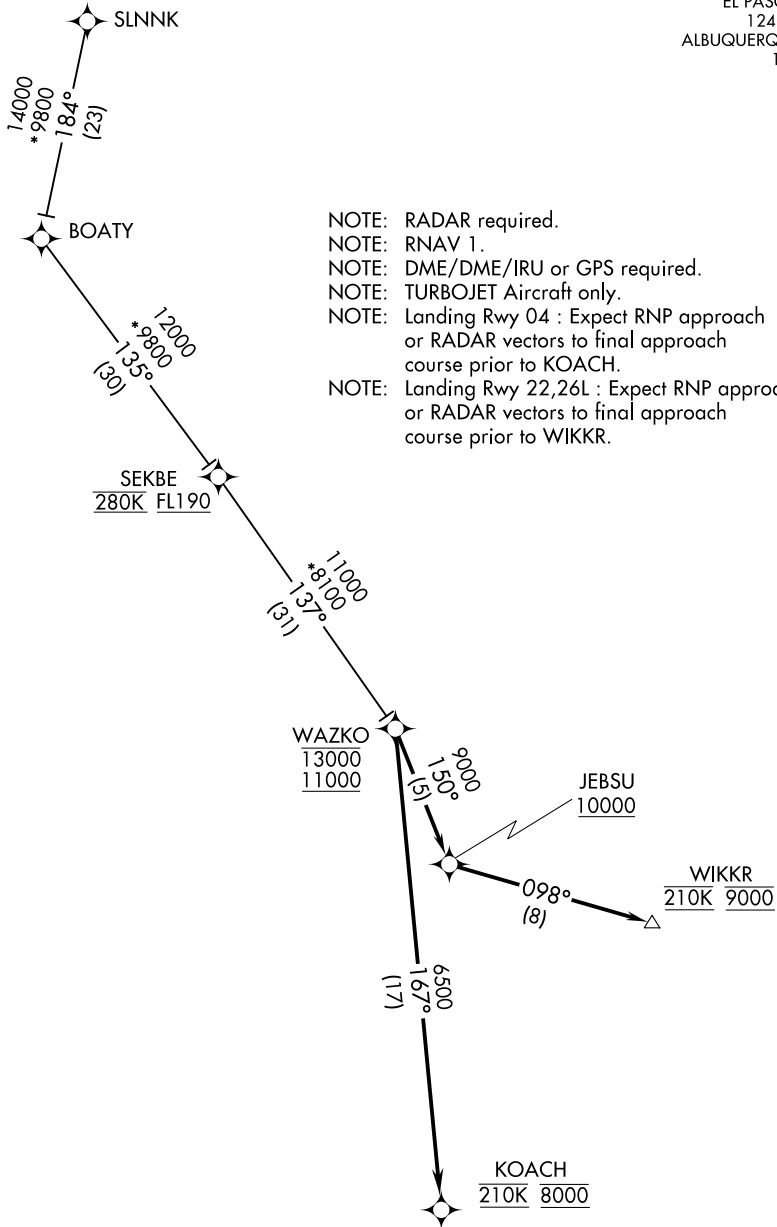


(WAZKO.WAZKO1) 20030
WAZKO ONE ARRIVAL (RNAV)

AL-134 (FAA)

EL PASO INTL (ELP)
 EL PASO, TEXAS

EL PASO D-ATIS
 120.0 254.3
 EL PASO APP CON
 124.25 298.85
 ALBUQUERQUE CENTER
 128.2 285.5



- NOTE: RADAR required.
- NOTE: RNAV 1.
- NOTE: DME/DME/IRU or GPS required.
- NOTE: TURBOJET Aircraft only.
- NOTE: Landing Rwy 04 : Expect RNP approach or RADAR vectors to final approach course prior to KOACH.
- NOTE: Landing Rwy 22,26L : Expect RNP approach or RADAR vectors to final approach course prior to WIKKR.

SC-3, 22 APR 2021 to 20 MAY 2021

SC-3, 22 APR 2021 to 20 MAY 2021

(NARRATIVE ON FOLLOWING PAGE)

NOTE: Chart not to scale.



WAZKO ONE ARRIVAL (RNAV)
 (WAZKO.WAZKO1) 03APR14

EL PASO, TEXAS
EL PASO INTL (ELP)

ARRIVAL ROUTE DESCRIPTION

SLNNK TRANSITION (SLNNK.WAZKO1):

LANDING RWY 4: From WAZKO on track 167° to KOACH at 8000 and at 210K. Expect RNAV (RNP) approach or RADAR vectors to final approach course.

LANDING RWY 8R: From WAZKO on track 167° to KOACH at 8000 and at 210K. Expect RADAR vectors to final approach course.

LANDING RWY 22/26L: From WAZKO on track 150° to cross JEBSU at or above 10000, then on track 098° to cross WIKKR at 9000 and at 210K. Expect RNAV (RNP) approach or RADAR vectors to final approach course.

LANDING RWY 26R: From WAZKO on track 150° to cross JEBSU at or above 10000, then on track 098° to cross WIKKR at 9000 and at 210K. Expect RADAR vectors to final approach course.

SC-3, 22 APR 2021 to 20 MAY 2021

SC-3, 22 APR 2021 to 20 MAY 2021