

LOC/DME I-MED	APP CRS	Rwy Idg	12246
111.1	093°	TDZE	672
Chan 48		Apt Elev	680

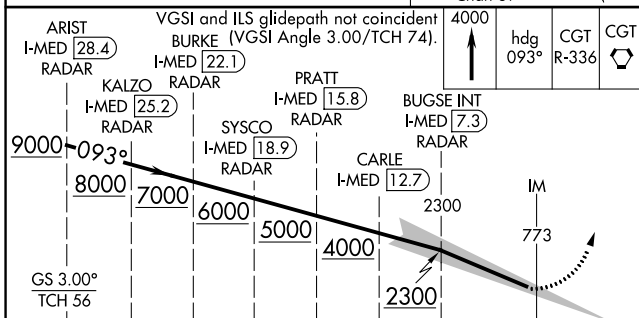
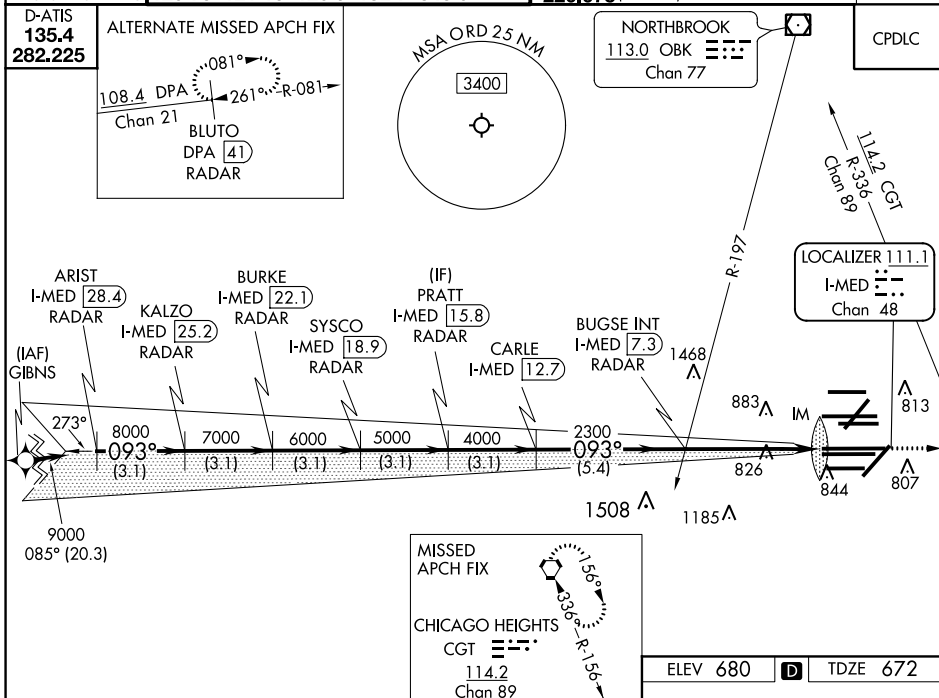
ILS RWY 10L (CAT II & III)

CHICAGO O'HARE INTL (ORD)

From GIBNS: RNAV-1 GPS required.
 RNAV 1-GPS or RADAR required for procedure entry. DME or RADAR required.
 Simultaneous approach authorized.

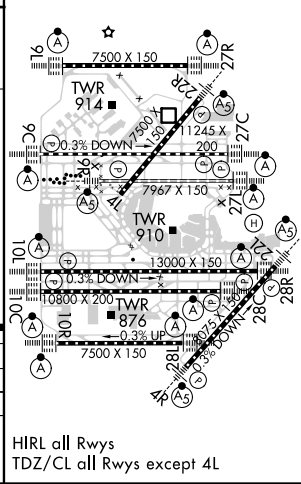
ALSIF-2
 MISSED APPROACH: Climb to 4000 on heading 093° and CGT VORTAC R-336 to CGT VORTAC and hold.

CHICAGO APP CON	O'HARE TOWERS	GND CON	(TWR CENTER)	CLNC DEL
119.0 292.125	128.15 348.0 133.0 348.0	124.125 (TWR NORTH)	121.75 (OBND)	121.6
	120.75 121.15 126.9 132.7 348.0	118.05 (TWR SOUTH)	121.9 (IBND)	
		226.675 (ALL TWS)		



ELEV 680	TDZE 672
----------	----------

ARIST I-MED 28.4 RADAR	KALZO I-MED 25.2 RADAR	BURKE I-MED 22.1 RADAR	SYSCO I-MED 18.9 RADAR	PRATT I-MED 15.8 RADAR	CARLE I-MED 12.7 RADAR	BUGSE INT I-MED 7.3 RADAR
3.1 NM			3.1 NM		5.4 NM	
CATEGORY A			CATEGORY B		CATEGORY C	
S-ILS 10L		CAT II RA 95/12 100 DA 772			S-ILS 10L	
S-ILS 10L		CAT III RVR 06				



EC-3, 22 APR 2021 to 20 MAY 2021

EC-3, 22 APR 2021 to 20 MAY 2021