

| | | |
|---|------------------------|--|
| LOC/DME I-MED 111.1 Chan 48 | APP CRS 093° | Rwy Idg 12246 TDZE 672 Apt Elev 680 |
|---|------------------------|--|

ILS RWY 10L (SA CAT I)

CHICAGO O'HARE INTL (ORD)

From GIBNS: RNAV-1 GPS required.
 RNAV 1-GPS or RADAR required for procedure entry. DME or RADAR required.
 Simultaneous approach authorized. Requires specific OPSPEC, MSPEC, or LOA approval and use of HUD to DH.



MISSED APPROACH: Climb to 4000 on heading 093° and CGT VORTAC R-336 to CGT VORTAC and hold.

| | | | | |
|---|--|--|---|--------------------------|
| CHICAGO APP CON 119.0 292.125 | O'HARE TOWERS 128.15 348.0 (Rwy 9L/27R) 133.0 348.0 (10R/28L) 120.75 121.15 126.9 132.7 348.0 (CENTER) | GND CON (TWR NORTH) 124.125 118.05 (TWR SOUTH) 122.675 (ALL TWRs) | (TWR CENTER) 121.75 (OBND) 121.9 (IBND) | CLNC DEL 121.6 |
|---|--|--|---|--------------------------|

D-ATIS **135.4 282.225**

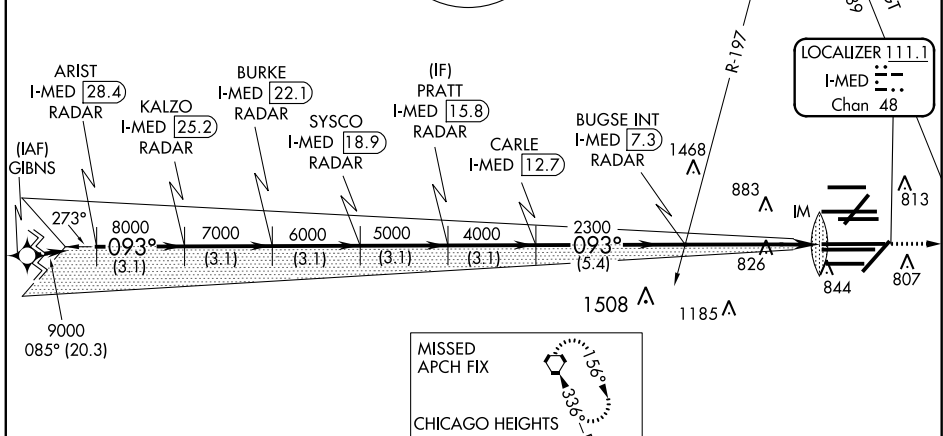
ALTERNATE MISSED APCH FIX

BLUTO DPA **41** RADAR

MSA ORD 25 NM
3400

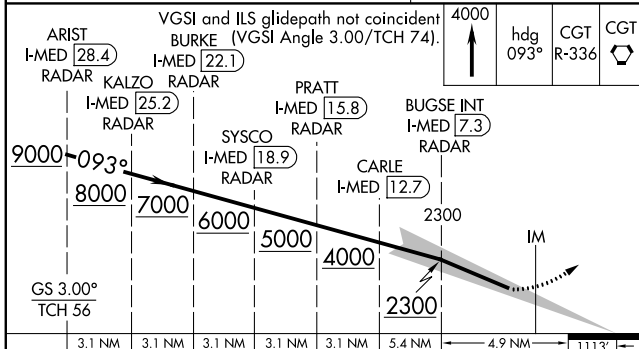
NORTHBROOK 113.0 OBK Chan 77

CPDLC



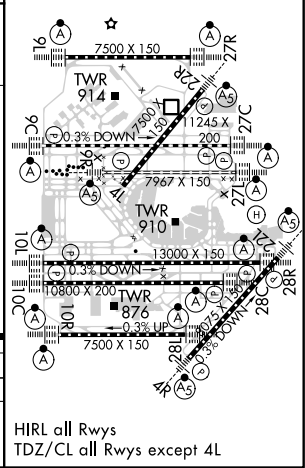
MISSED APCH FIX

CHICAGO HEIGHTS CGT **114.2** Chan 89



| | | | | |
|--|-----------|---|------------|---|
| CATEGORY | A | B | C | D |
| S-ILS 10L | RA 162/14 | | 150 DA 822 | |
| SA CATEGORY I ILS - SPECIAL AIRCREW & AIRCRAFT CERTIFICATION REQUIRED | | | | |

| | |
|----------|----------|
| ELEV 680 | TDZE 672 |
|----------|----------|



EC-3, 22 APR 2021 to 20 MAY 2021

EC-3, 22 APR 2021 to 20 MAY 2021