

LOC/DME I-IAC 110.5 Chan 42	APP CRS 273°	Rwy ldg 7782 TDZE 654 Apt Elev 680
---	------------------------	--

ILS RWY 27L (CAT II & III)

CHICAGO O'HARE INTL (ORD)

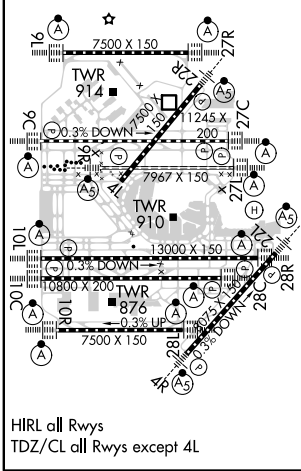
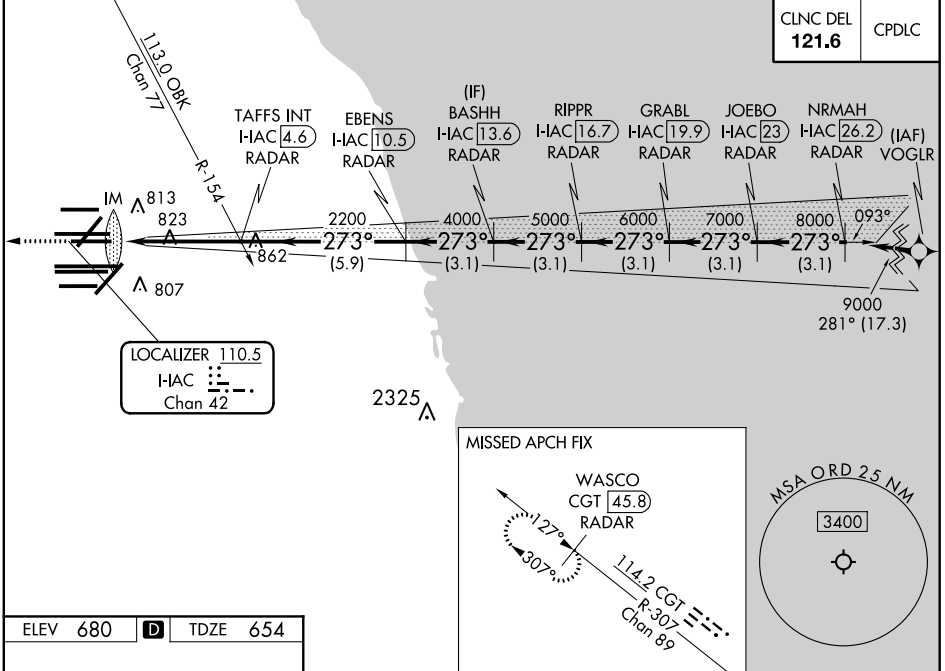
From VOGLR: RNAV 1-GPS required. Aircraft not GPS equipped - RADAR required for procedure entry. DME or RADAR required.

Simultaneous approach authorized.

ALSF-2

MISSED APPROACH: Climb to 1200 then climb to 4000 on heading 265° and on CGT VORTAC R-307 to WASCO/CGT 45.8 DME/RADAR and hold.

D-ATIS 135.4 282.225	CHICAGO APP CON 119.0 292.125	O'HARE TOWERS 128.15 348.0 (Rwy 9L/27R) 133.0 348.0 (10R/28L) 120.75 121.15 126.9 132.7 348.0 (CENTER)	GND CON (TWR NORTH) 124.125 (TWR SOUTH) 118.05 (ALL TWRs) 226.675	(TWR CENTER) 121.75 (IBND) (IBND) 121.9
--	---	--	---	--



1200	4000	CGT R-307	WASCO CGT 45.8 RADAR	VGSI and ILS glidepath not coincident (VGSI Angle 3.00/TCH 67).
hdg 265°				
TAFS INT I-IAC 4.6 RADAR	EBENS I-IAC 10.5 RADAR	BASHH I-IAC 13.6 RADAR	RIPPR I-IAC 16.7 RADAR	GRABL I-IAC 19.9 RADAR
IM 750	2200	4000	5000	6000
2200	4000	5000	6000	7000
1040'	4.7 NM	5.9 NM	3.1 NM	3.1 NM
3.1 NM	3.1 NM	3.1 NM	3.1 NM	3.1 NM
9000				
GS 3.00°				
TCH 55				
NRMAH I-IAC 26.2 RADAR				
JOEBO I-IAC 23 RADAR				
GRABL I-IAC 19.9 RADAR				
RIPPR I-IAC 16.7 RADAR				
EBENS I-IAC 10.5 RADAR				
TAFS INT I-IAC 4.6 RADAR				
I-IAC DME ANTENNA				
IM 750				
2200				
4000				
5000				
6000				
7000				
9000				
GS 3.00°				
TCH 55				

CATEGORY II & III ILS - SPECIAL AIRCREW & AIRCRAFT CERTIFICATION REQUIRED

EC-3, 22 APR 2021 to 20 MAY 2021

EC-3, 22 APR 2021 to 20 MAY 2021