

LOC/DME I-AIC 110.5 Chan 42	APP CRS 273°	Rwy ldg TDZE Apt Elev	7782 654 680
---	------------------------	-----------------------------	---

ILS RWY 27L (SA CAT I)

CHICAGO O'HARE INTL (ORD)

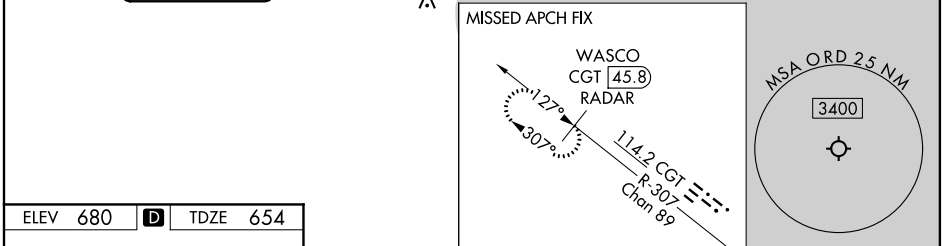
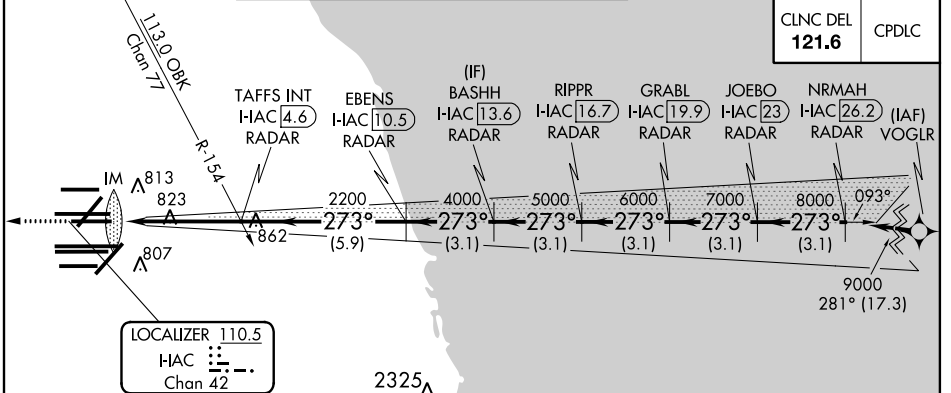
From VOGLR: RNAV 1-GPS required. Aircraft not GPS equipped - RADAR required for procedure entry. DME or RADAR required.

ALSF-2
A

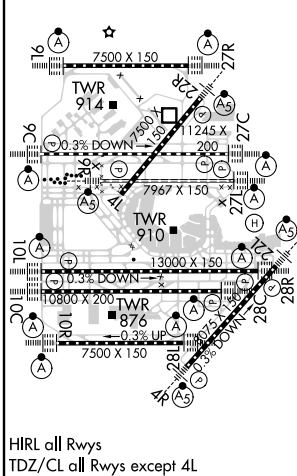
MISSED APPROACH: Climb to 1200 then climb to 4000 on heading 265° and on CGT VORTAC R-307 to WASCO/CGT 45.8 DME/RADAR and hold.

Simultaneous approach authorized. Requires specific OPSPEC, MSPEC, or LOA approval and use of HUD to DH. For inop ALS, increase S-LOC 27L Cat C/D visibility to 1 $\frac{1}{2}$ SM.

D-ATIS 135.4 282.225	CHICAGO APP CON 119.0 292.125	O'HARE TOWERS 128.15 348.0 (Rwy 9L/27R) 133.0 348.0 (10R/28L) 120.75 121.15 126.9 132.7 348.0 (CENTER)				GND CON (TWR CENTER) 124.125 (TWR NORTH) 121.75 (ORBND) 118.05 (TWR SOUTH) 121.9 (IBND) 226.675 (ALL TWR)
--	---	--	--	--	--	---



ELEV 680	D	TDZE 654									
1200	4000	CGT R-307	WASCO CGT 45.8 RADAR	VGSi and ILS glidepath not coincident (VGSi Angle 3.00/TCH 67).							
hdg 265°				BASHH I-AIC 13.6 RADAR	GRABL I-AIC 19.9 RADAR	NRMAH I-AIC 26.2 RADAR					
				TAFFS INT I-AIC 4.6 RADAR	EBENS I-AIC 10.5 RADAR	RIPPR I-AIC 16.7 RADAR	JOEBO I-AIC 23 RADAR				
				HAC DME ANTENNA							
				2200	4000	5000	6000				
							7000				
							8000				
							9000				
							GS 3.00° TCH 55				
				1040'	4.7 NM	5.9 NM	3.1 NM	3.1 NM	3.1 NM	3.1 NM	3.1 NM
				CATEGORY	A	B	C	D			
				S-ILS 27L	RA 164/14 150 DA 804						



EC-3, 22 APR 2021 to 20 MAY 2021

EC-3, 22 APR 2021 to 20 MAY 2021