

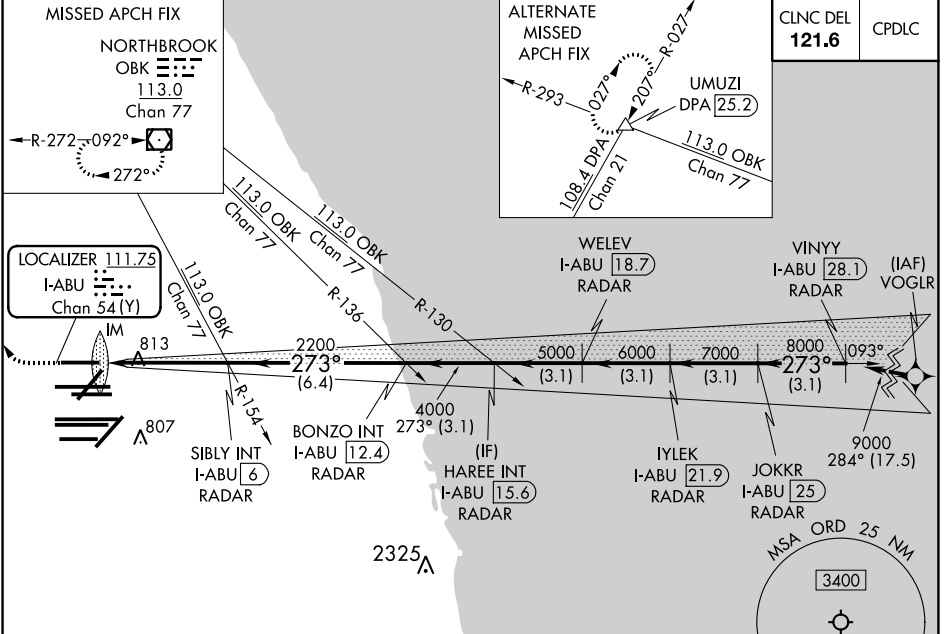
| | | |
|---|------------------------|---|
| LOC/DME I-ABU 111.75 Chan 54 (Y) | APP CRS 273° | Rwy Idg 7500 TDZE 664 Apt Elev 680 |
|---|------------------------|---|

ILS RWY 27R (SA CAT I)

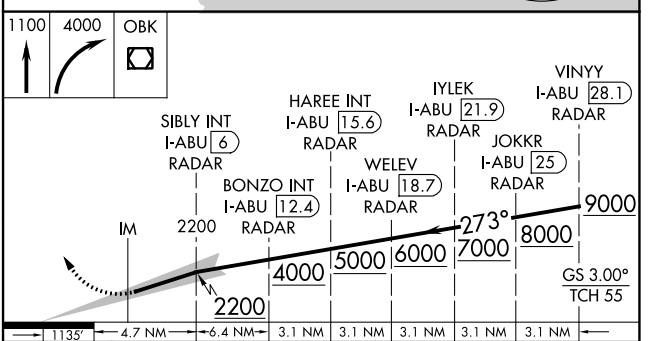
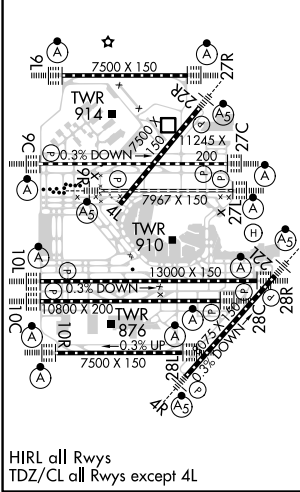
CHICAGO O'HARE INTL (ORD)

| | | |
|--|--------|--|
| RNAV-1 GPS or RADAR required for procedure entry. RADAR or DME required. | ALSF-2 | MISSED APPROACH: Climb to 1100 then climbing right turn to 4000 direct OBK VOR/DME and hold, continue climb-in-hold to 4000. |
| Simultaneous approach authorized. Requires specific OPSPEC, MSPEC, or LOA approval and use of HUD to DH. | | |

| | | | | |
|--|---|---|--|---|
| D-ATIS 135.4 282.225 | CHICAGO APP CON 119.0 292.125 | O'HARE TOWERS APP CON 128.15 348.0 (Rwy 9L/27R) 133.0 348.0 (10R/28L) 120.75 121.15 126.9 132.7 348.0 (CENTER) | GND CON (TWR NORTH) 124.125 (TWR SOUTH) 118.05 (ALL TWS) 226.675 | (TWR CENTER) 121.75 (CBND) 121.9 (IBND) |
|--|---|---|--|---|



| | | |
|----------|---|----------|
| ELEV 680 | D | TDZE 664 |
|----------|---|----------|



| | | | | |
|-----------|----------------------|---|---|---|
| CATEGORY | A | B | C | D |
| S-ILS-27R | RA 171/14 150 DA 814 | | | |

SA CATEGORY I ILS - SPECIAL AIRCREW & AIRCRAFT CERTIFICATION REQUIRED

EC-3, 22 APR 2021 to 20 MAY 2021

EC-3, 22 APR 2021 to 20 MAY