

LOC/DME I-VQX <b>110.75</b> Chan 44(Y)	APP CRS <b>274°</b>	Rwy ldg TDZE Apt Elev	<b>7500</b> <b>667</b> <b>680</b>
--	------------------------	-----------------------------	---

# ILS RWY 28L (CAT II & III)

CHICAGO O'HARE INTL (ORD)

From VOGLR: RNAV 1-GPS required.

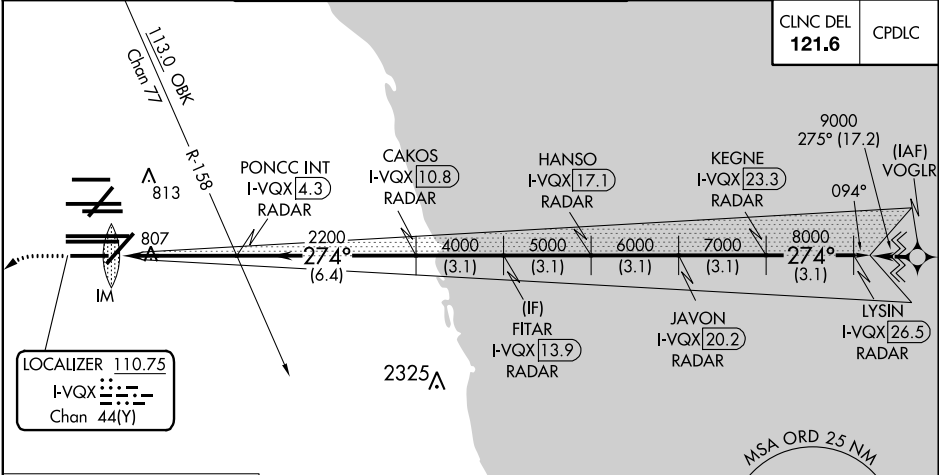
Aircraft not GPS equipped - RADAR required for procedure entry.  
DME or RADAR required.

ALSF-2 	MISSED APPROACH: Climb to 1200 then climbing left turn to 4000 direct CGT VORTAC and hold.

Simultaneous approach authorized.  
CAT II: RVR 1000 authorized with specific OPSPEC, MSPEC,  
or LOA approval and use of autoland or HUD to touchdown.

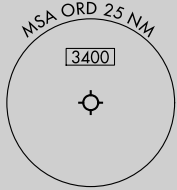
D-ATIS <b>135.4</b> <b>282.225</b>	CHICAGO APP CON <b>119.0</b> <b>292.125</b>	O'HARE TOWERS <b>128.15</b> <b>348.0</b> (Rwy 9L/27R) <b>133.0</b> <b>348.0</b> (10R/28L)		GND CON (TWR NORTH) <b>124.125</b>	(TWR CENTER) <b>121.75</b> (OBND)
		<b>120.75</b> <b>121.15</b> <b>126.9</b> <b>132.7</b> <b>348.0</b> (CENTER)		(TWR SOUTH) <b>118.05</b>	(IBND) <b>121.9</b>
				<b>226.675</b> (ALL TWRs)	

CLNC DEL <b>121.6</b>	CPDLC
--------------------------	-------

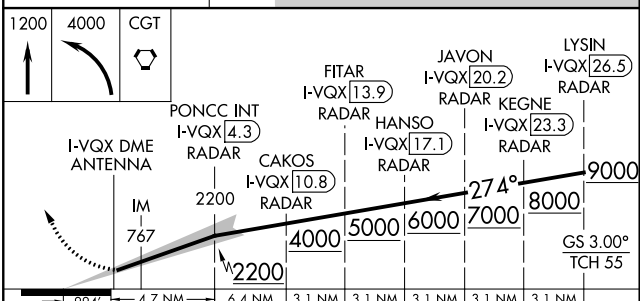
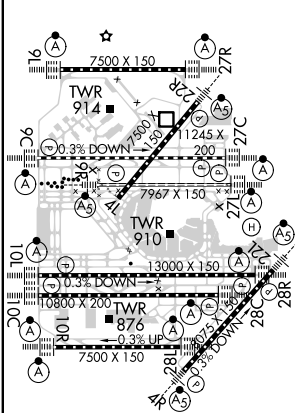


MISSED APCH FIX  
CHICAGO HEIGHTS  
CGT 114.2  
Chan 89  
R-156

ALTERNATE MISSED APCH FIX  
JOLIET  
JOT  
112.3  
Chan 70  
R-246 066°



ELEV 680	D	TDZE 667
----------	---	----------



CATEGORY	A	B	C	D
S-ILS 28L	CAT II RA 106/12 100 DA 767			
S-ILS 28L	CAT III RVR 06			

## CATEGORY II & III ILS - SPECIAL AIRCREW & AIRCRAFT CERTIFICATION REQUIRED

EC-3, 22 APR 2021 to 20 MAY 2021

EC-3, 22 APR 2021 to 20 MAY 2021