

LOC/DME I-OYG <b>111.9</b> Chan <b>56</b>	APP CRS <b>093°</b>	Rwy Idg <b>11245</b> TDZE <b>673</b> Apt Elev <b>680</b>
---	------------------------	--

# ILS RWY 9C (CAT II & III)

CHICAGO O'HARE INTL (ORD)

DME or RADAR required. From GIBNS: RNAV 1-GPS required. Aircraft not GPS equipped - RADAR required for procedure entry.

ALSF-2

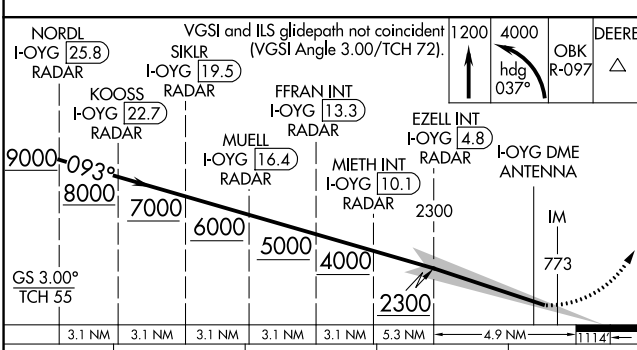
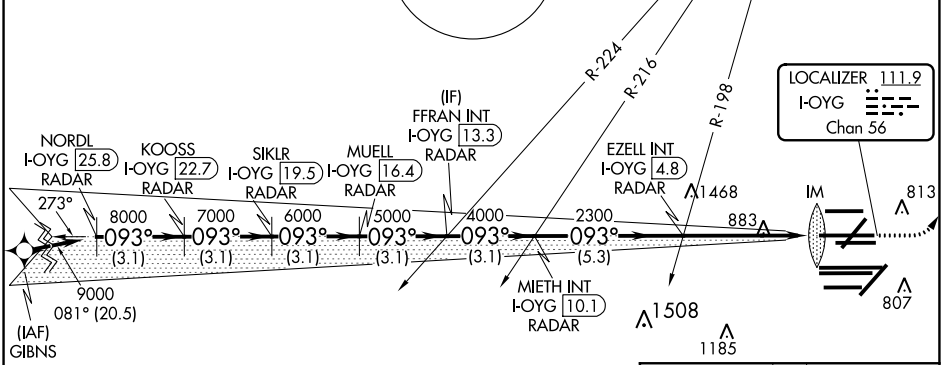
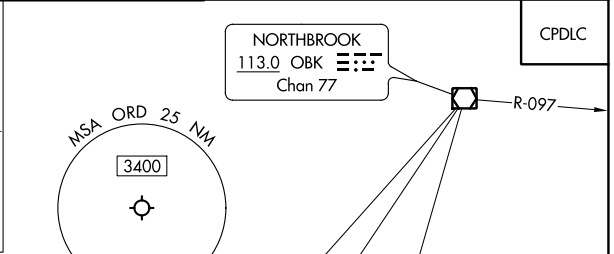
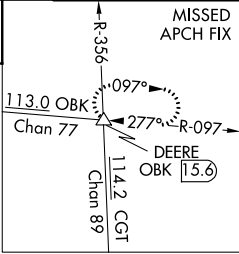


MISSED APPROACH: Climb to 1200 then climbing left turn to 4000 on heading 037° and OBK VOR/DME R-097 to DEERE INT/ OBK 15.6 DME and hold.

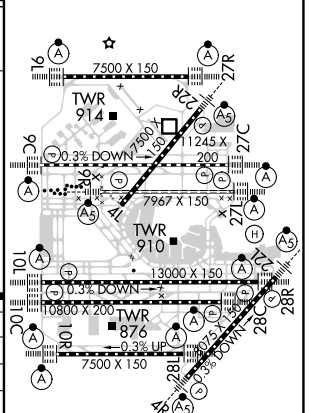
Simultaneous approach authorized. CAT II: RVR 1000 authorized with specific OPSPEC, MSPEC or LOA approval and use of Autoland or HUD to touchdown.

CHICAGO APP CON <b>119.0 292.125</b>	O'HARE TOWERS <b>128.15 348.0</b> (Rwy 9L/27R) <b>133.0 348.0</b> (10R/28L) <b>132.7 348.0</b> (CENTER)	GND CON (TWR NORTH) <b>124.125</b> (TWR SOUTH) <b>118.05</b> (ALL TWRs) <b>226.675</b>	(TWR CENTER) <b>121.75</b> (OBND) <b>121.9</b> (IBND)	CLNC DEL <b>121.6</b>
---	--	---	---	--------------------------

D-ATIS  
**135.4**  
**282.225**



ELEV 680	<b>D</b>	TDZE 673
----------	----------	----------



CATEGORY	A	B	C	D
S-ILS 9L	CAT II RA 100/12 100 DA 773			
S-ILS 9L	CAT III RVR 06			

## CATEGORY II & III ILS - SPECIAL AIRCREW & AIRCRAFT CERTIFICATION REQUIRED

HIRL all Rwys  
TDZ/CL all Rwys except 4L

EC-3, 22 APR 2021 to 20 MAY 2021

EC-3, 22 APR 2021 to 20 MAY 2021