

LOC/DME I-OYG 111.9 Chan 56	APP CRS 093°	Rwy Idg 11245 TDZE 673 Apt Elev 680
--	------------------------	--

I LS RWY 9C (SA CAT I)

CHICAGO O'HARE INTL (ORD)

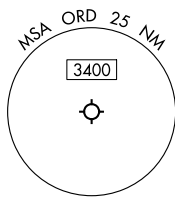
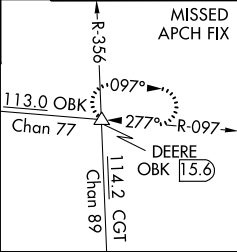
DME or RADAR required. From GIBNS: RNAV 1-GPS required. Aircraft not GPS equipped - RADAR required for procedure entry.

ALSIF-2
MISSED APPROACH: Climb to 1200 then climbing left turn to 4000 on heading 037° and OBK VOR/DME R-097 to DEERE INT/ OBK 15.6 DME and hold.

Simultaneous approach authorized. Requires specific OPSPEC, MSPEC or LOA approval and use of HUD to DH.

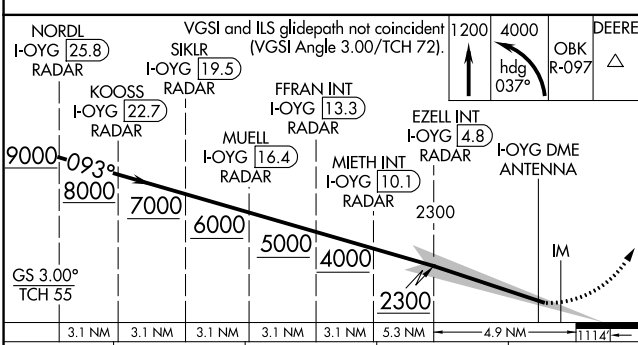
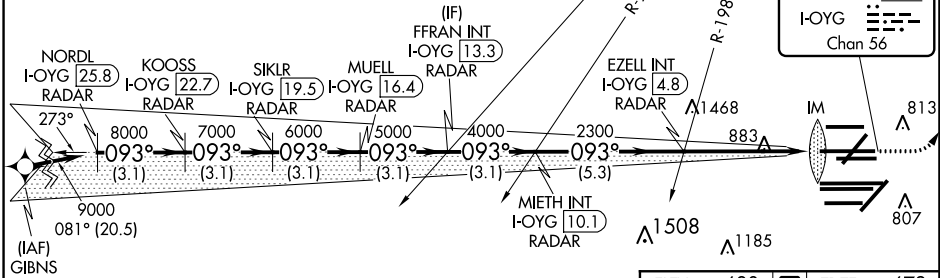
CHICAGO APP CON 119.0 292.125	O'HARE TOWERS Rwy 9L/27R 128.15 348.0 (10R/28L) 120.75 121.15 126.9 132.7 348.0 (CENTER)	GND CON (TWR CENTER) TWR NORTH 124.125 TWR SOUTH 118.05 ALL TWRS 226.675	(TWR CENTER) OBND 121.75 IBND 121.9	CLNC DEL 121.6
---	---	--	---	--------------------------

D-ATIS
135.4
282.225

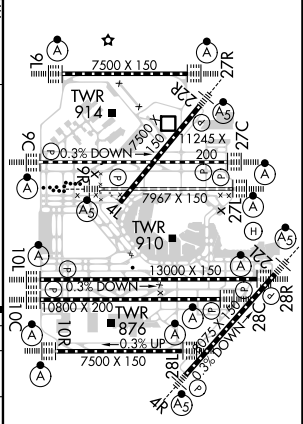


NORTHBROOK
113.0 OBK
Chan 77

LOCALIZER 111.9
I-OYG
Chan 56



ELEV 680	TDZE 673
----------	----------



CATEGORY	A	B	C	D
S-ILS 9L	RA 154/14 150 DA 823			

SA CATEGORY I ILS - SPECIAL AIRCREW & AIRCRAFT CERTIFICATION REQUIRED

HIRL all Rwys
TDZ/CL all Rwys except 4L

EC-3, 22 APR 2021 to 20 MAY 2021

EC-3, 22 APR 2021 to 20 MAY 2021