

LOC I-LQQ	APP CRS	Rwy ldg TDZE	8075 654
<b>110.1</b>	<b>225°</b>	Apt Elev	<b>680</b>

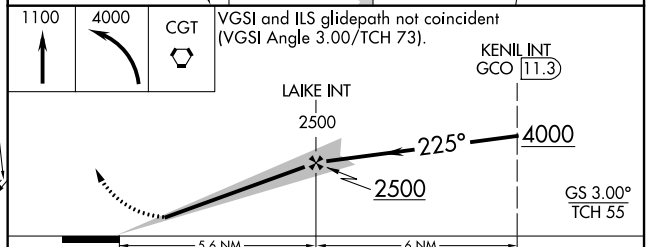
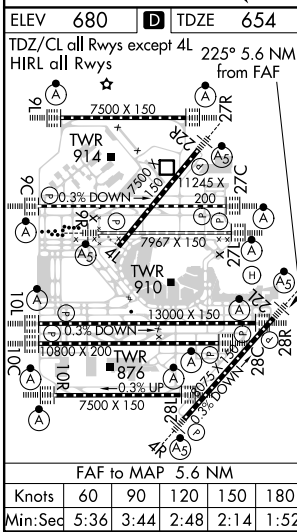
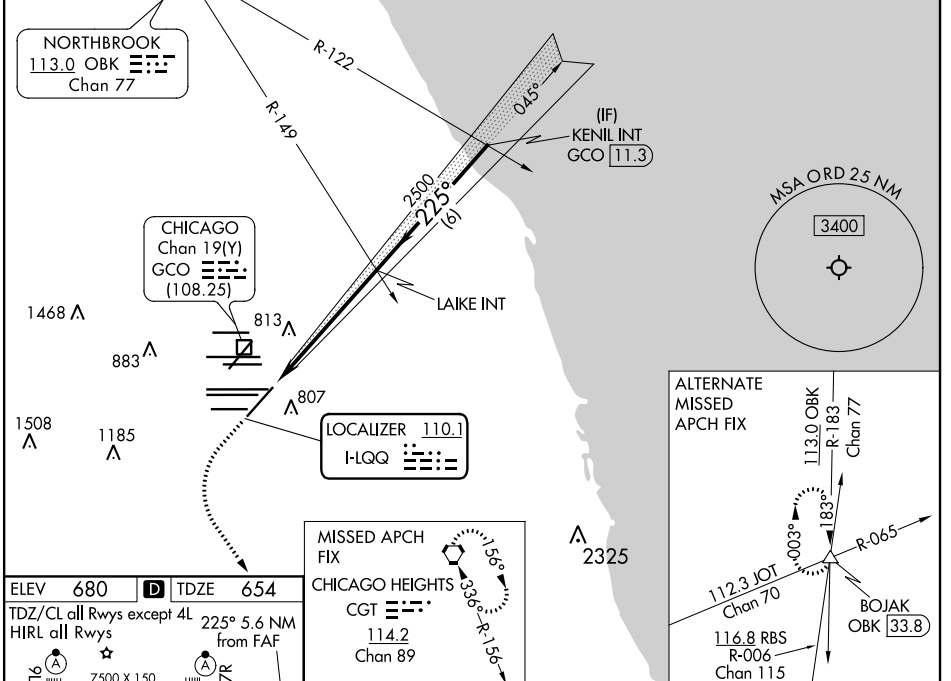
# ILS or LOC RWY 22L

CHICAGO O'HARE INTL (ORD)

RADAR required for procedure entry.		MALSR	MISSED APPROACH: Climb to 1100 then climbing left turn to 4000 direct CGT VORTAC and hold.
Simultaneous approach authorized.			

CHICAGO APP CON	O'HARE TOWERS	GND CON	(TWR CENTER)	CLNC DEL
<b>119.0 292.125</b>	<b>128.15 348.0</b> (Rwy 9L/27R) <b>133.0 348.0</b> (10R/28L) <b>348.0</b> (CENTER)	<b>124.125</b> (TWR NORTH) <b>118.05</b> (TWR SOUTH) <b>226.675</b> (ALL TWRS)	<b>121.75</b> (OBND) <b>121.9</b> (IBND)	<b>121.6</b>

D-ATIS	CPDLC
<b>135.4</b> <b>282.225</b>	



1100	4000	CGT	VGSI and ILS glidepath not coincident (VGSI Angle 3.00/TCH 73).	
			KENIL INT GCO	113.3
CATEGORY	A	B	C	D
S-ILS 22L	854/18		200 (200-1/2)	
S-LOC 22L	1120/24	466 (500-1/2)	1120/50	466 (500-1)
CIRCLING	1220-1	540 (600-1)	1220-1 1/2	1460-2 1/2
			540 (600-1 1/2)	780 (800-2 1/2)

EC-3, 22 APR 2021 to 20 MAY 2021

EC-3, 22 APR 2021 to 20 MAY 2021