

LOC/DME I-UYJ 111.9 Chan 56	APP CRS 273°	Rwy ldg 11245 TDZE 653 Apt Elev 680
--	------------------------	--

ILS or LOC RWY 27C

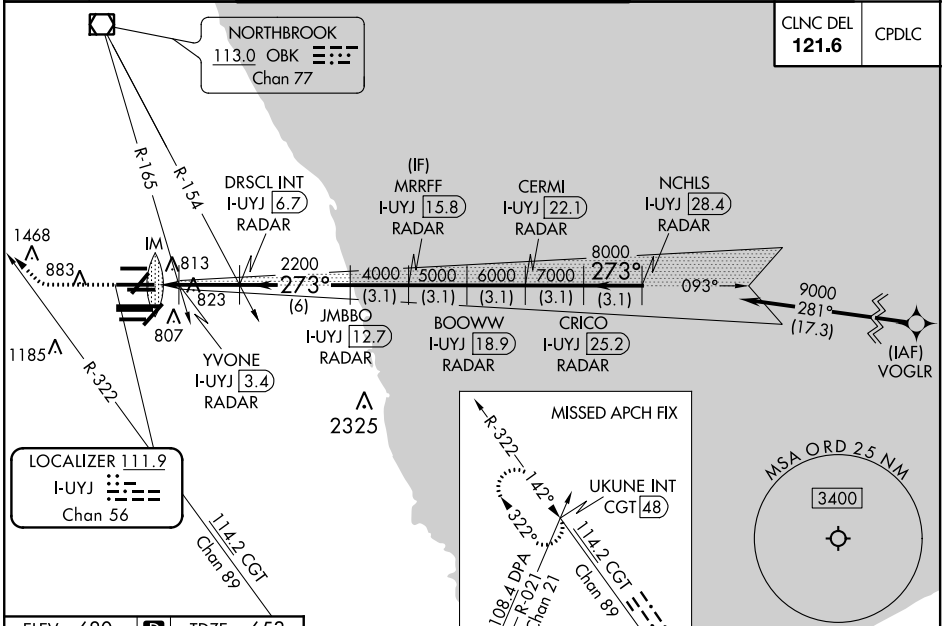
CHICAGO O'HARE INTL (ORD)

From VOGLR: RNAV 1-GPS required. Aircraft not GPS equipped - RADAR required for procedure entry. DME or RADAR required.

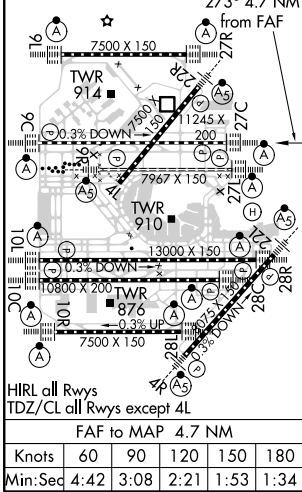
ALSF-2
MISSED APPROACH: Climb to 1100 then climbing right turn to 4000 on heading 290° and CGT R-322 to UKUNE INT/ CGT 48 DME and hold.

Simultaneous approach authorized. For inop ALS, increase S-LOC 27C Cat C/D visibility to 1½ SM.

D-ATIS 135.4 282.225	CHICAGO APP CON 119.0 292.125	O'HARE TOWERS 128.15 348.0 (Rwy 9L/27R) 133.0 348.0 (10R/28L) 120.75 121.15 126.9 132.7 348.0 (CENTER)	GND CON (TWR CENTER) (TWR NORTH) (TWR SOUTH) (ALL TWRs) 124.125 121.75 118.05 226.675
--	---	--	--



ELEV 680	TDZE 653
----------	----------



1100	4000	CGT R-322	UKUNE INT	VGSI and ILS glidepath not coincident (VGSI Angle 3.00/TCH 75).	NCHLS I-UYJ 28.4 RADAR
*LOC only.		DRSCL INT I-UYJ 6.7 RADAR	JMBBO I-UYJ 12.7 RADAR	BOOWW I-UYJ 18.9 RADAR	CRICO I-UYJ 25.2 RADAR
I-UYJ 2		YVONE I-UYJ 3.4 RADAR	2200	4000	5000
IM		1160*2200	273°	6000	7000
0.1		1.3	3.3 NM	3.1 NM	3.1 NM
CATEGORY		A	B	C	D
S-ILS 27C		853/18 200 (200-½)			
S-LOC 27C		1160/24 507 (500-½)		1160/55 507 (500-1)	
YVONE FIX MINIMUMS (DUAL VOR RECEIVERS or DME REQUIRED)					
S-LOC 27C		1080/24 427 (400-½)		1080/40 427 (400-¾)	

EC-3, 22 APR 2021 to 20 MAY 2021

EC-3, 22 APR 2021 to 20 MAY 2021