

CHICAGO, ILLINOIS

AL-166 (FAA)

ILS PRM RWY 10C (CLOSE PARALLEL) CHICAGO O'HARE INTL (ORD)

LOC/DME I-SXH 108.95 Chan 26(Y)	APP CRS 093°	Rwy Ldg 10540 TDZE 669 Apt Elev 680
--	------------------------	--

RNAV 1-GPS or RADAR required for procedure entry. DME or RADAR required.
From GIBNS: RNAV-1 GPS required.

Simultaneous approach authorized.
Use of FD or AP required during simultaneous operations.
Dual VHF comm required. See additional requirements on AAUP.

ALSIF-2

MISSED APPROACH: Climb to 4000 on heading 093° and CGT VORTAC R-336 to CGT VORTAC and hold.

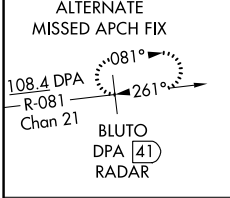
D-ATIS **135.4**
282.225

CHICAGO APP CON
119.0 292.125

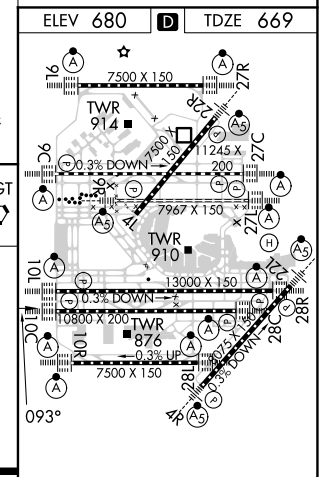
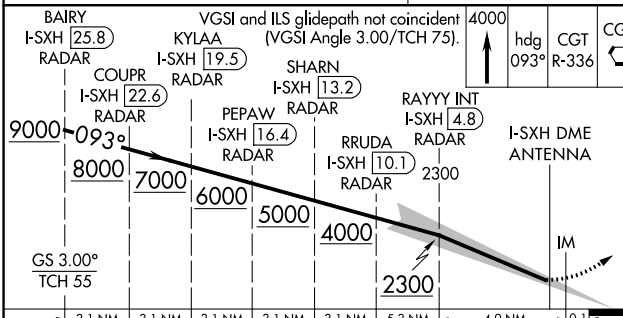
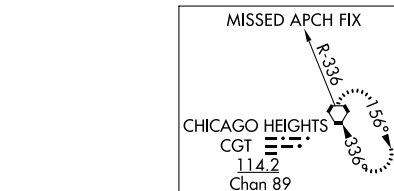
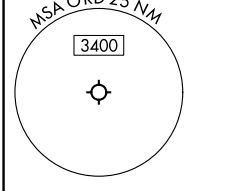
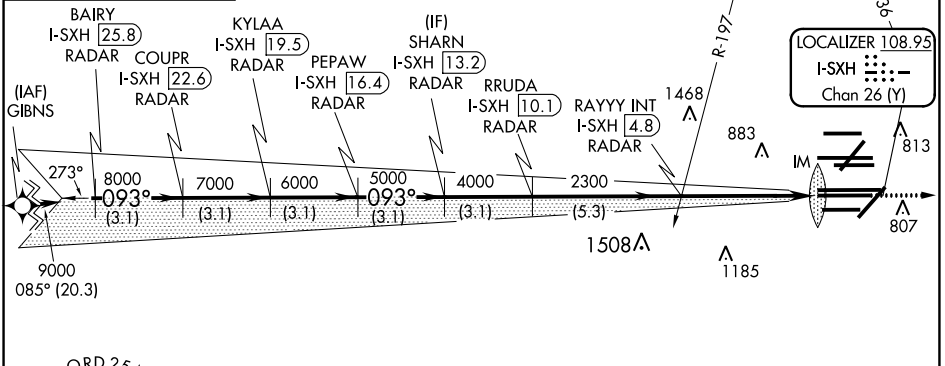
O'HARE TOWERS

128.15 348.0 (Rwy 9L/27R) **133.0 348.0** (10R/28L)
120.75 121.15 126.9 132.7 348.0 (CENTER)
PRM 119.625

GND CON (TWR CENTER) **121.75** (OBND)
118.05 (TWR SOUTH) **121.9** (IBND)
226.675 (ALL TWRs)



CNLC DEL **121.6** CPDLC



CATEGORY	A	B	C	D
S-ILS 10C		869/18	200 (200-1/2)	

CHICAGO, ILLINOIS
Amdt 1A 03JAN19

41°59'N-87°54'W

CHICAGO O'HARE INTL (ORD) ILS PRM RWY 10C (CLOSE PARALLEL)

EC-3, 22 APR 2021 to 20 MAY 2021

EC-3, 22 APR 2021 to 20 MAY 2021