

LOC/DME I-HZJ 110.75 Chan 44 (Y)	APP CRS 094°	Rwy Idg TDZE Apt Elev	7500 680 680
---	------------------------	-----------------------------	---

ILS Z RWY 10R (SA CAT I)

CHICAGO O'HARE INTL (ORD)

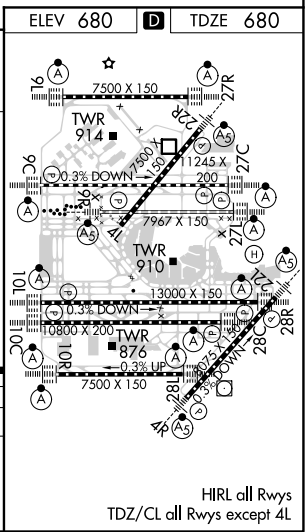
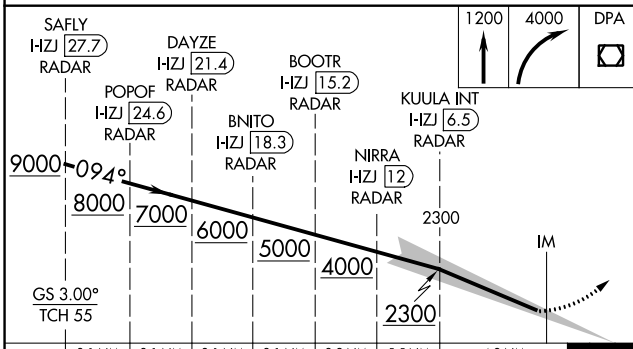
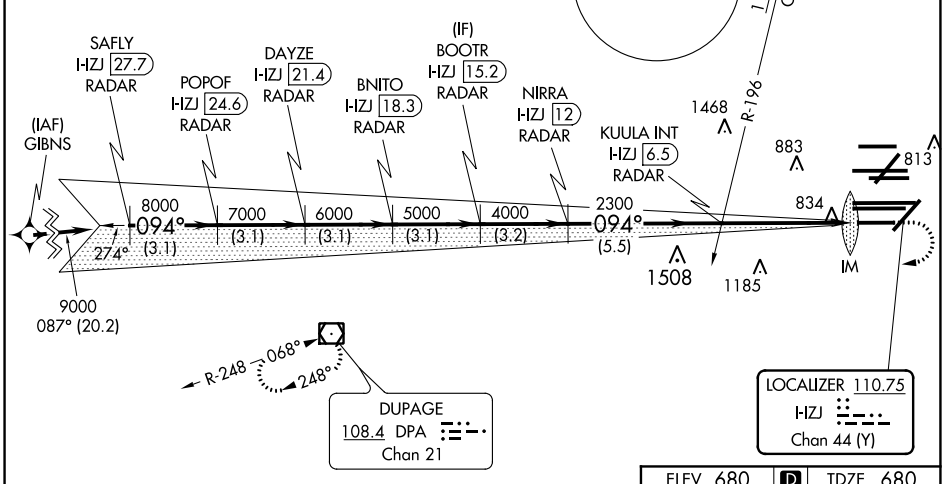
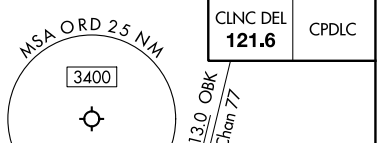
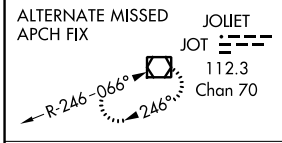
RNAV 1-GPS or RADAR required for procedure entry. DME or RADAR required.
From GIBNS: RNAV-1 GPS required.

Simultaneous approach authorized. Requires specific OPSPEC, MSPEC, or LOA approval and use of HUD to DH.



MISSED APPROACH: Climb to 1200 then climbing right turn to 4000 direct DPA VOR/DME and hold.

D-ATIS 135.4	CHICAGO APP CON 119.0 292.125	O'HARE TOWERS 128.15 348.0 (Rwy 9L/27R) 133.0 348.0 (10R/28L) 120.75 121.15 126.9 132.7 348.0 (CENTER)	GND CON (TWR NORTH) 124.125 (TWR SOUTH) 118.05 (ALL TWRs) 226.675	(TWR CENTER) (CBND) 121.75 (IBND) 121.9
------------------------	---	--	---	--



CATEGORY	A	B	C	D
S-ILS 10R	RA 165/14		150 DA 830	
SA CATEGORY I ILS-SPECIAL AIRCREW & AIRCRAFT CERTIFICATION REQUIRED				

EC-3, 22 APR 2021 to 20 MAY 2021

EC-3, 22 APR 2021 to 20 MAY 2021