

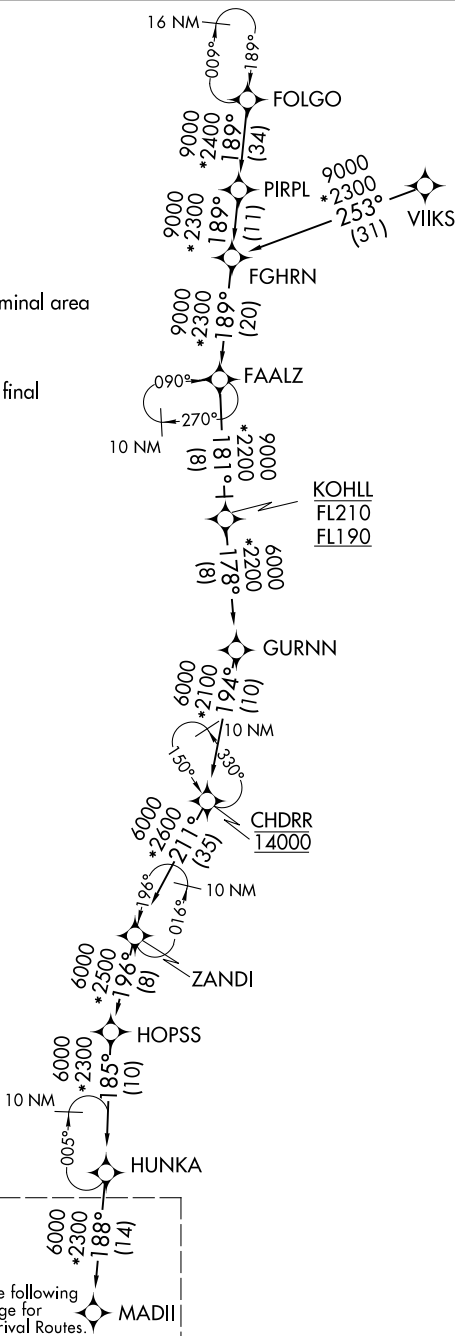
MADII SIX ARRIVAL (RNAV) Transition Routes

CHICAGO O'HARE INTL (ORD)
CHICAGO, ILLINOIS

CHICAGO APP CON
119.0 292.125
D-ATIS
135.4 282.225

- NOTE: RADAR required.
- NOTE: RNAV 1.
- NOTE: DME/DME/IRU or GPS required.
- NOTE: ZANDI Enroute transition: For Milwaukee terminal area departures only.
- NOTE: VIKS Enroute transition: ATC assigned only.
- NOTE: ORD Landing east: Expect RADAR vectors to final approach course after MADII.

- CHDRR TRANSITION (CHDRR.MADII6);
- FAALZ TRANSITION (FAALZ.MADII6);
- FGHRN TRANSITION (FGHRN.MADII6);
- FOLGO TRANSITION (FOLGO.MADII6);
- KOHLL TRANSITION (KOHLL.MADII6);
- PIRPL TRANSITION (PIRPL.MADII6);
- VIKS TRANSITION (VIKS.MADII6);
- ZANDI TRANSITION (ZANDI.MADII6);



(CONTINUED ON FOLLOWING PAGE)

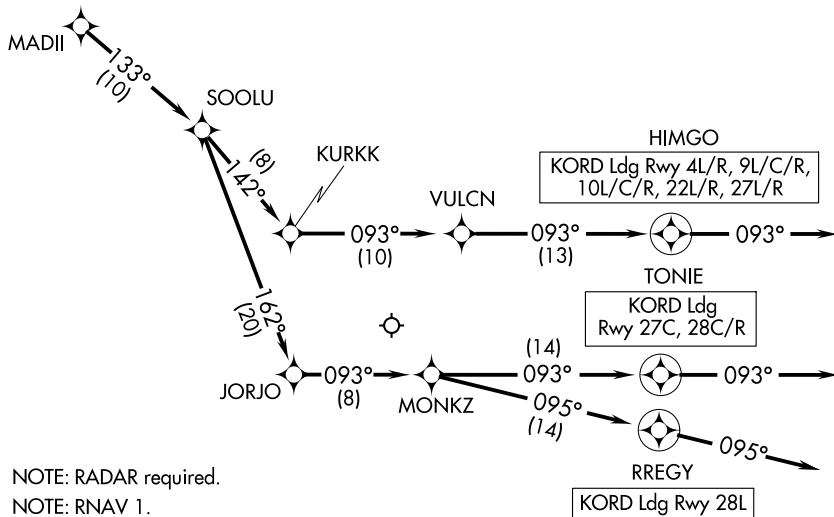
NOTE: Chart not to scale.

See following page for Arrival Routes.

EC-3, 22 APR 2021 to 20 MAY 2021

EC-3, 22 APR 2021 to 20 MAY 2021

CHICAGO APP CON
119.0 292.125
D-ATIS
135.4 282.225



- NOTE: RADAR required.
- NOTE: RNAV 1.
- NOTE: DME/DME/IRU or GPS required.
- NOTE: ORD Landing east: Expect RADAR vectors to final approach course after MADII.

NOTE: Chart not to scale.

ARRIVAL ROUTE DESCRIPTION

From MADII on track 133° to SOOLU.

LANDING RUNWAY 4L/R, 9L/C/R, 10L/C/R, 22L/R, 27L/R: From SOOLU on track 142° to KURKK, then on track 093° to VULCN, then on track 093° to HIMGO, then on track 093°. Expect RADAR vectors to final approach course.

LANDING RUNWAY 27C, 28C/R: From SOOLU on track 162° to JORJO, then on track 093° to MONKZ, then on track 093° to TONIE, then on track 093°. Expect RADAR vectors to final approach course.

LANDING RUNWAY 28L: From SOOLU on track 162° to JORJO, then on track 093° to MONKZ, then on track 095° to RREGY, then on track 095°. Expect RADAR vectors to final approach course.