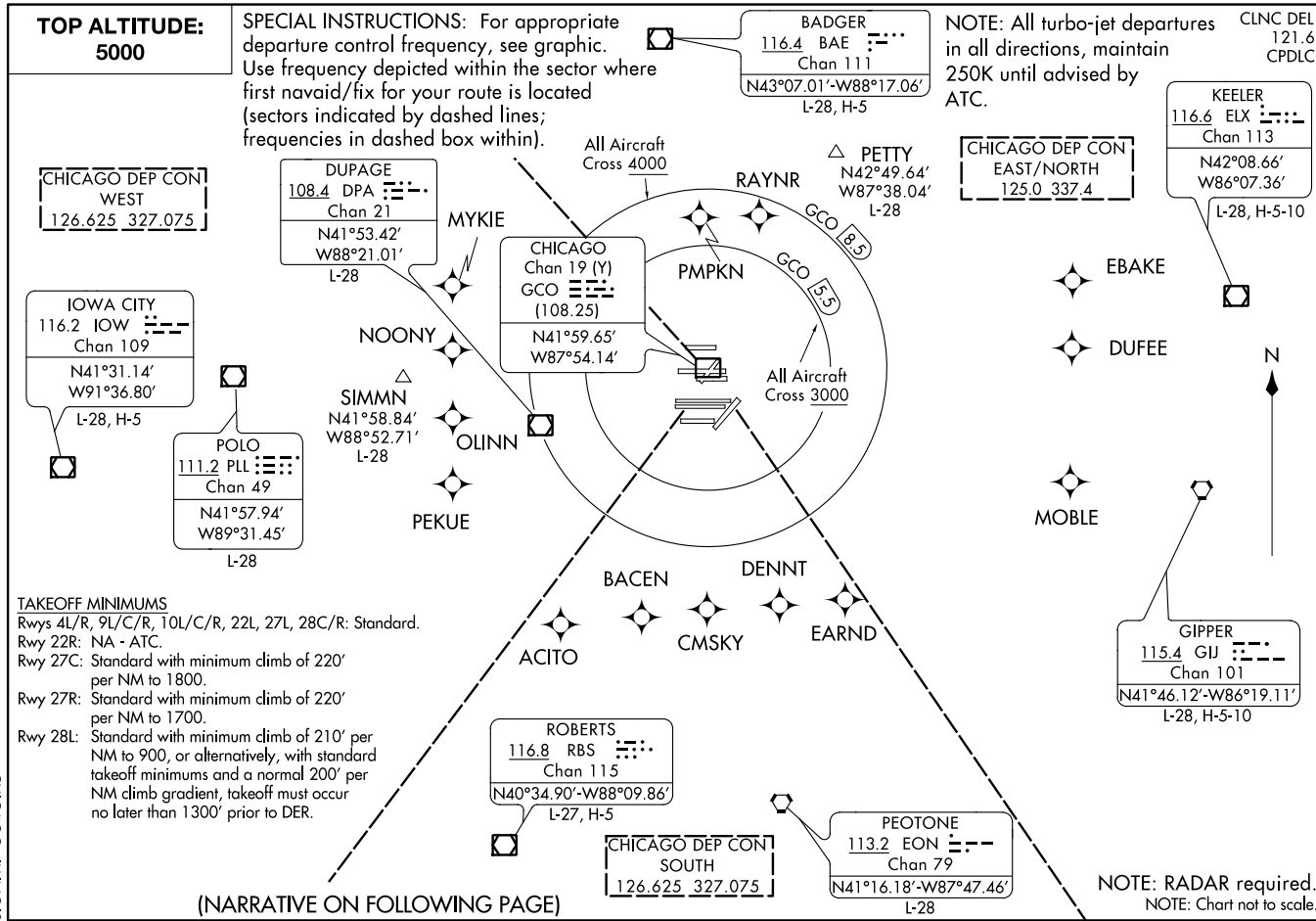


05NOV20

O'HARE SIX DEPARTURE

CHICAGO, ILLINOIS
CHICAGO O'HARE INTL (ORD)



(NARRATIVE ON FOLLOWING PAGE)

**TOP ALTITUDE:
5000**

SPECIAL INSTRUCTIONS: For appropriate departure control frequency, see graphic. Use frequency depicted within the sector where first navaid/fix for your route is located (sectors indicated by dashed lines; frequencies in dashed box within).

NOTE: All turbo-jet departures in all directions, maintain 250K until advised by ATC.

CLNC DEL
121.6
CPDLC

CHICAGO DEP CON
WEST
126.625 327.075

DUPAGE
108.4 DPA
Chan 21
N41°53.42'
W88°21.01'
L-28

IOWA CITY
116.2 IOW
Chan 109
N41°31.14'
W91°36.80'
L-28, H-5

POLO
111.2 PLL
Chan 49
N41°57.94'
W89°31.45'
L-28

SIMMNN
N41°58.84'
W88°52.71'
L-28

CHICAGO
Chan 19 (Y)
GCO
(108.25)
N41°59.65'
W87°54.14'

ROBERTS
116.8 RBS
Chan 115
N40°34.90'-W88°09.86'
L-27, H-5

CHICAGO DEP CON
SOUTH
126.625 327.075

BADGER
116.4 BAE
Chan 111
N43°07.01'-W88°17.06'
L-28, H-5

PETTY
N42°49.64'
W87°38.04'
L-28

CHICAGO DEP CON
EAST/NORTH
125.0 337.4

KEELER
116.6 ELX
Chan 113
N42°08.66'
W86°07.36'
L-28, H-5-10

GIPPER
115.4 GIJ
Chan 101
N41°46.12'-W86°19.11'
L-28, H-5-10

PEOTONE
113.2 EON
Chan 79
N41°16.18'-W87°47.46'
L-28

O'HARE SIX DEPARTURE

CHICAGO O'HARE INTL (ORD)
CHICAGO, ILLINOIS

20310

AL-166 (FAA)

O'HARE SIX DEPARTURE



DEPARTURE ROUTE DESCRIPTION

ALL AIRCRAFT: Expect RADAR vectors to first enroute navaid/fix.
Expect clearance to requested altitude/flight level ten minutes after departure.

ALL AIRCRAFT: Cross 5.5 DME arc of GCO DME at or above 3000, cross
8.5 DME arc of GCO DME at or above 4000, maintain 5000 or assigned altitude.
If unable to comply advise ATC as soon as possible prior to departure.

EC-3, 22 APR 2021 to 20 MAY 2021

EC-3, 22 APR 2021 to 20 MAY 2021