


WAAS CH <b>81929</b> <b>W04A</b>	APP CRS <b>044°</b>	Rwy Idg <b>8075</b> TDZE <b>661</b> Apt Elev <b>680</b>
--	------------------------	---

# RNAV (GPS) RWY 4R

CHICAGO O'HARE INTL (ORD)

**⚠** For uncompensated Baro-VNAV systems, LNAV/VNAV NA below -22°C (-7°F) or above 39°C (102°F). Simultaneous approach authorized with Rwy 4L. DME/DME RNP-0.3 NA. LNAV procedure NA during simultaneous operations. Use of FD or AP providing RNAV track guidance required during simultaneous operations.

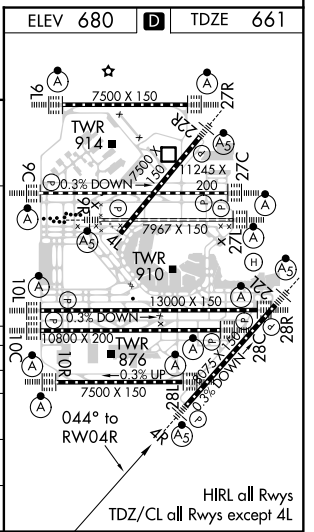
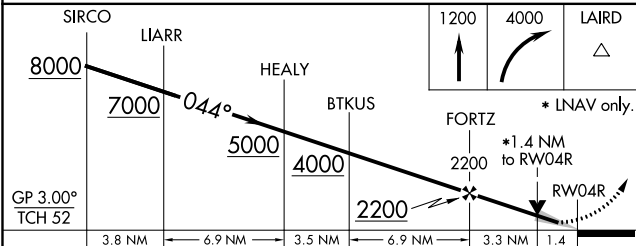
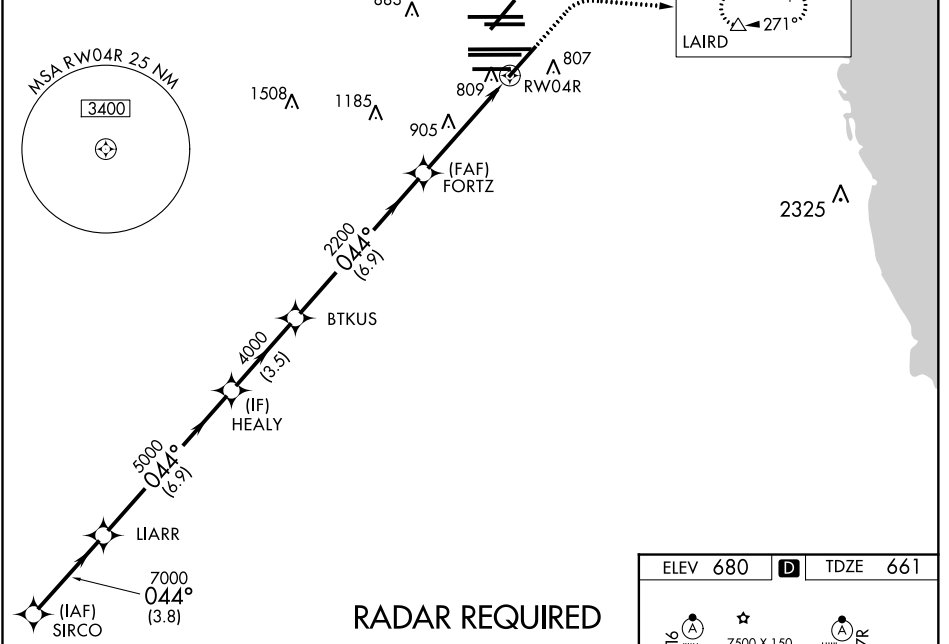
**MALSR** 

**MISSED APPROACH:** Climb to 1200 then climbing right turn to 4000 direct LAIRD and hold, continue climb-in-hold to 4000.

CHICAGO APP CON <b>119.0 292.125</b>	O'HARE TOWERS <b>128.15 348.0</b> (Rwy 9L/27R) <b>133.0 348.0</b> (10R/28L) <b>120.75 121.15 126.9 132.7 348.0</b> (CENTER)	GND CON <b>124.125</b> (TWR NORTH) <b>118.05</b> (TWR SOUTH) <b>226.675</b> (ALL TWRS)	(TWR CENTER) <b>121.75</b> (OBND) <b>121.9</b> (IBND)	CLNC DEL <b>121.6</b>
---	--	---	---	--------------------------

D-ATIS  
**135.4**  
**282.225**

MISSED APCH FIX 5 NM  
  
LAIRD  
CPDLC



GP 3.00° TCH 52	8000	7000	5000	4000	2200	1200	4000	LAIRD
	3.8 NM	6.9 NM	3.5 NM	6.9 NM	3.3 NM	1.4		
CATEGORY	A	B	C	D				
LPV DA		861/18	200 (200-½)					
LNAV/VNAV DA		990/32	329 (400-¾)					
LNAV MDA	1160/24	499 (500-½)	1160/50	499 (500-1)				
<b>C</b> CIRCLING	1220-1	540 (600-1)	1220-1½	1460-2½				
			540 (600-1½)	780 (800-2½)				