

# RNAV (GPS) PRM Y RWY 10R

(CLOSE PARALLEL)

CHICAGO O'HARE INTL (ORD)

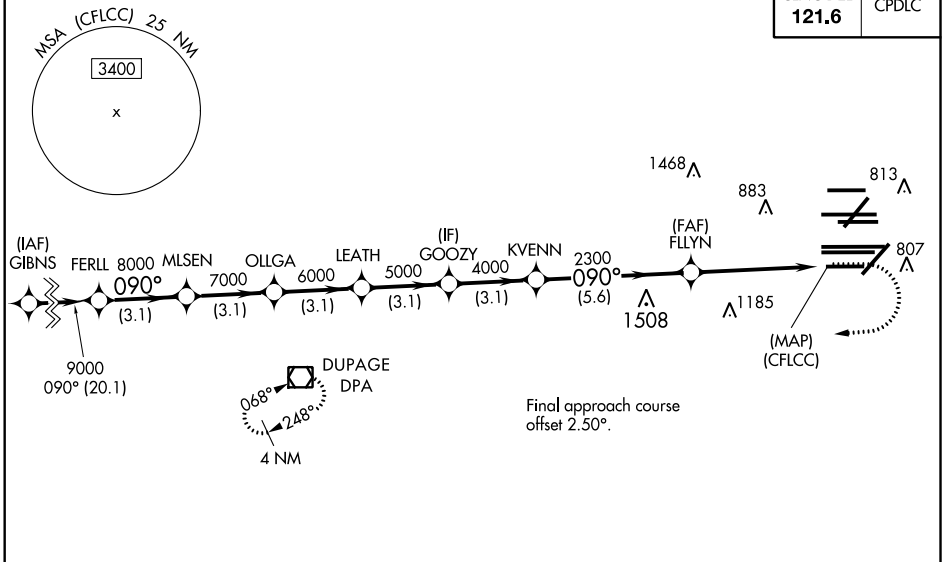
WAAS CH <b>77937</b> <b>W10D</b>	APP CRS <b>090°</b>	Rwy Idg TDZE Apt Elev	<b>7500</b> <b>680</b> <b>680</b>
----------------------------------------	------------------------	-----------------------------	-----------------------------------------

RNP APCH.  
 Simultaneous approach authorized. Dual VHF comm required. See additional requirements on AAUP. For uncompensated Baro-VNAV systems, LNAV/VNAV NA below -19°C or above 54°C. Use of FD or AP providing RNAV track guidance required during simultaneous operations. For inop ALS, increase LNAV/VNAV all Cats visibility to 1 $\frac{1}{2}$  SM.

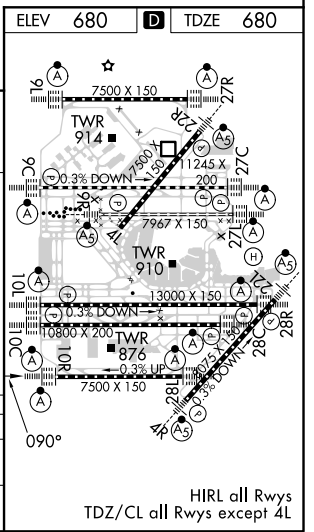
ALS-2  
 MISSED APPROACH: Climb to 1200 then climbing right turn to 4000 direct DPA VOR/DME and hold.

D-ATIS <b>135.4</b> <b>282.225</b>	CHICAGO APP CON <b>119.0 292.125</b>	O'HARE TOWERS <b>128.15 348.0</b> (Rwy 9L/27R) <b>133.0 348.0</b> (10R/28L) <b>120.75 121.15 126.9 132.7 348.0</b> (CENTER) <b>PRM 128.05</b>	GND CON (TWR CENTER) <b>124.125</b> (TWR NORTH) <b>121.75</b> (OBND) <b>118.05</b> (TWR SOUTH) <b>121.9</b> (IBND) <b>226.675</b> (ALL TWRS)
------------------------------------------	-----------------------------------------	--------------------------------------------------------------------------------------------------------------------------------------------------	----------------------------------------------------------------------------------------------------------------------------------------------

CINC DEL <b>121.6</b>	CPDLC
--------------------------	-------



	ELEV 680	TDZE 680
FERLL	9000	090°
MLSEN	8000	090°
OLLGA	7000	090°
LEATH	6000	090°
GOOZY	5000	090°
KVENN	4000	090°
FLLYN	2300	090°
(CFLCC)	2300	090°
GP 3.00 TCH 55		
	3.1 NM	3.1 NM
	3.1 NM	3.1 NM
	3.1 NM	3.1 NM
	3.1 NM	3.1 NM
	5.6 NM	4.9 NM
CATEGORY	A	B
LPV DA	930/24	250 (300- $\frac{1}{2}$ )
LNAV/VNAV DA	1157/50	477 (500-1)



# RNAV (GPS) PRM Y RWY 10R (CLOSE PARALLEL)

EC-3, 22 APR 2021 to 20 MAY 2021

EC-3, 22 APR 2021 to 20 MAY 2021