

APP CRS 273°	Rwy Idg TDZE Apt Elev	7782 654 680
------------------------	-----------------------------	-----------------------------------------

RNAV (RNP) Y RWY 27L

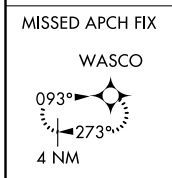
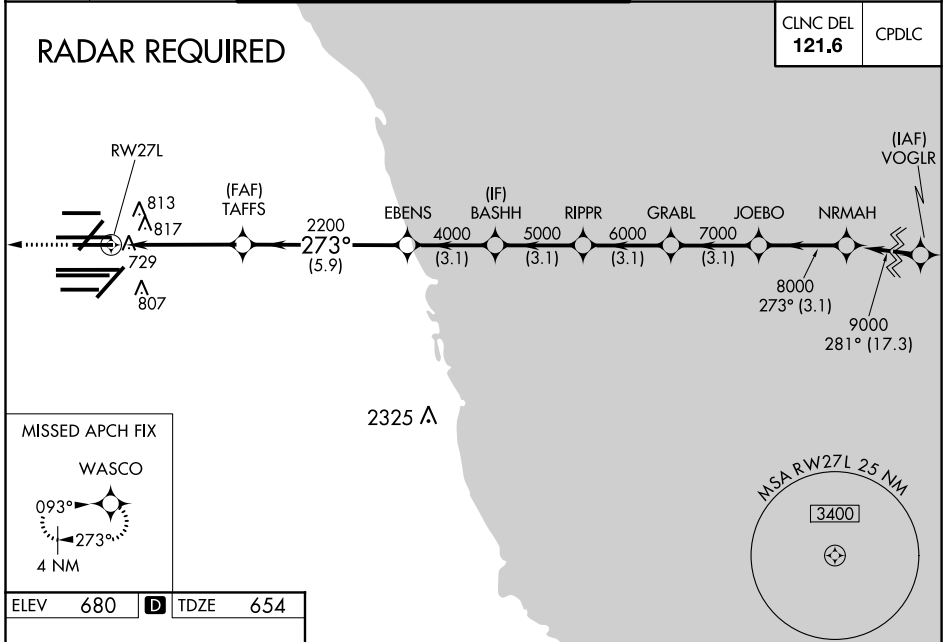
CHICAGO O'HARE INTL (ORD)

▼ For uncompensated Baro-VNAV systems, procedure NA below -19°C (-2°F) or above 54°C (130°F). Simultaneous approach authorized. GPS required. Use of FD or AP providing RNAV track guidance required during simultaneous operations.

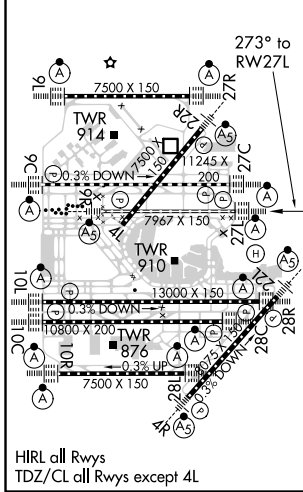
ALSF-2

MISSED APPROACH: Climb to 4000 on track 273° to WASCO and hold.

D-ATIS 135.4 282.225	CHICAGO APP CON 119.0 292.125	O'HARE TOWERS 128.15 348.0 (Rwy 9L/27R) 133.0 348.0 (10R/28L) 120.75 121.15 126.9 132.7 348.0 (CENTER)	GND CON (TWR NORTH) 124.125 118.05 (TWR SOUTH) 226.675 (ALL TWSRS)	(TWR CENTER) 121.75 (OBND) 121.9 (IBND)
------------------------------------------	-----------------------------------------	-----------------------------------------------------------------------------------------------------------------------------------	--------------------------------------------------------------------------------------------------	-------------------------------------------------------------



ELEV	680	D	TDZE	654
------	------------	----------	------	------------



4000	↑	tr 273°	WASCO	VGSI and RNAV glidepath not coincident (VGSI Angle 3.00/TCH 67).	NRMAH	9000					
			TAFS	EBENS	BASHH	RIPPR	GRABL	JOEBO	8000	273°	9000
			2200	4000	5000	6000	7000				
			← 4.7 NM →	← 5.9 NM →	← 3.1 NM →	← 3.1 NM →	← 3.1 NM →	← 3.1 NM →			
			← 2200								
			← 273°								
											GP 3.00° TCH 55
			CATEGORY	A	B	C	D				
			RNP 0.15 DA		992/30	338 (400-%)					
			RNP 0.30 DA		1162-1¼	508 (500-1¼)					

AUTHORIZATION REQUIRED

EC-3, 22 APR 2021 to 20 MAY 2021

EC-3, 22 APR 2021 to 20 MAY 2021