

CHICAGO APP CON  
119.0 292.125  
D-ATIS  
135.4 282.225

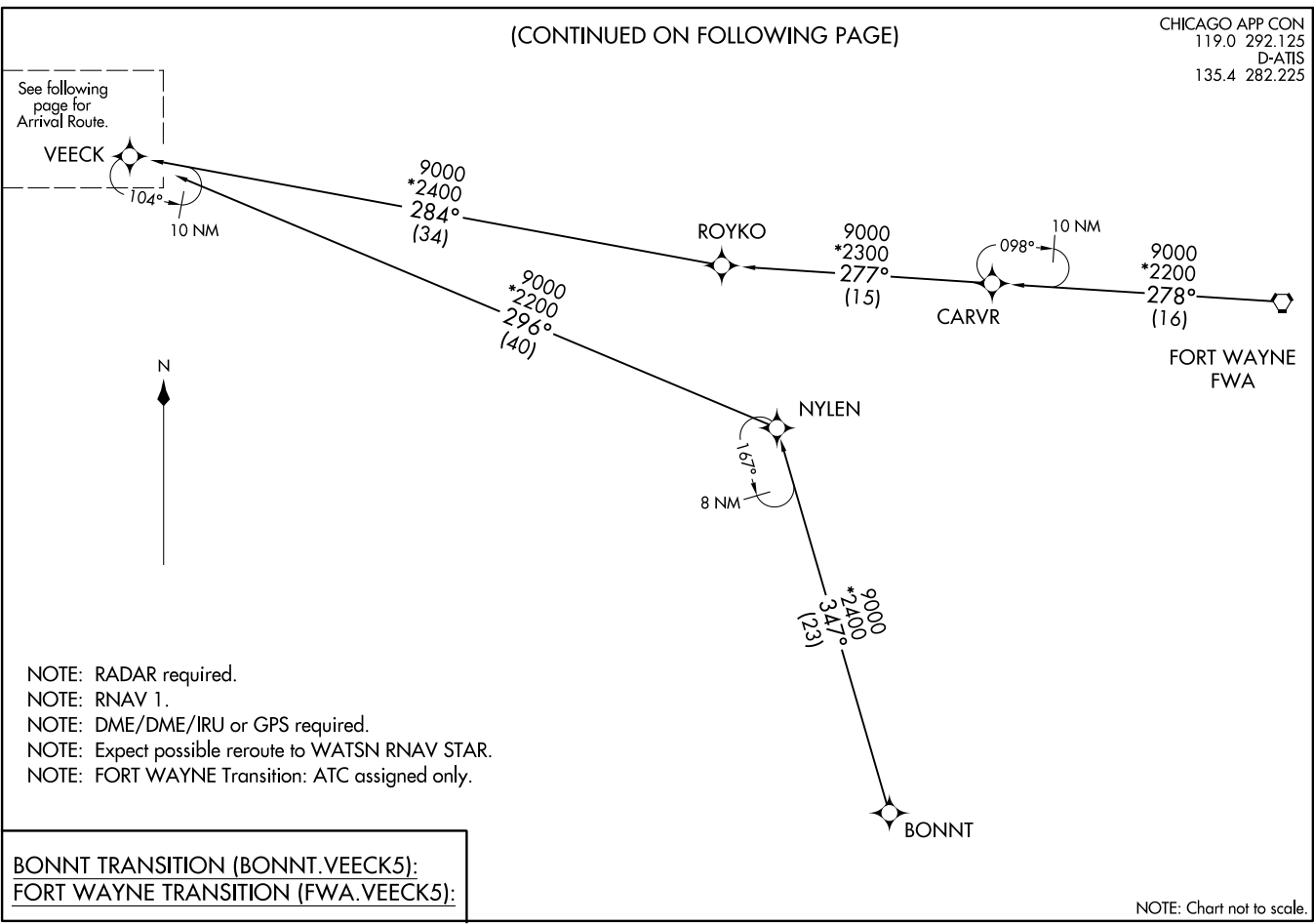
(CONTINUED ON FOLLOWING PAGE)

VEECK VEECK5) 20310  
VEECK FIVE ARRIVAL (RNAV) Transition Routes  
AL-166 (FAA)

CHICAGO O'HARE INTL (ORD)  
CHICAGO, ILLINOIS

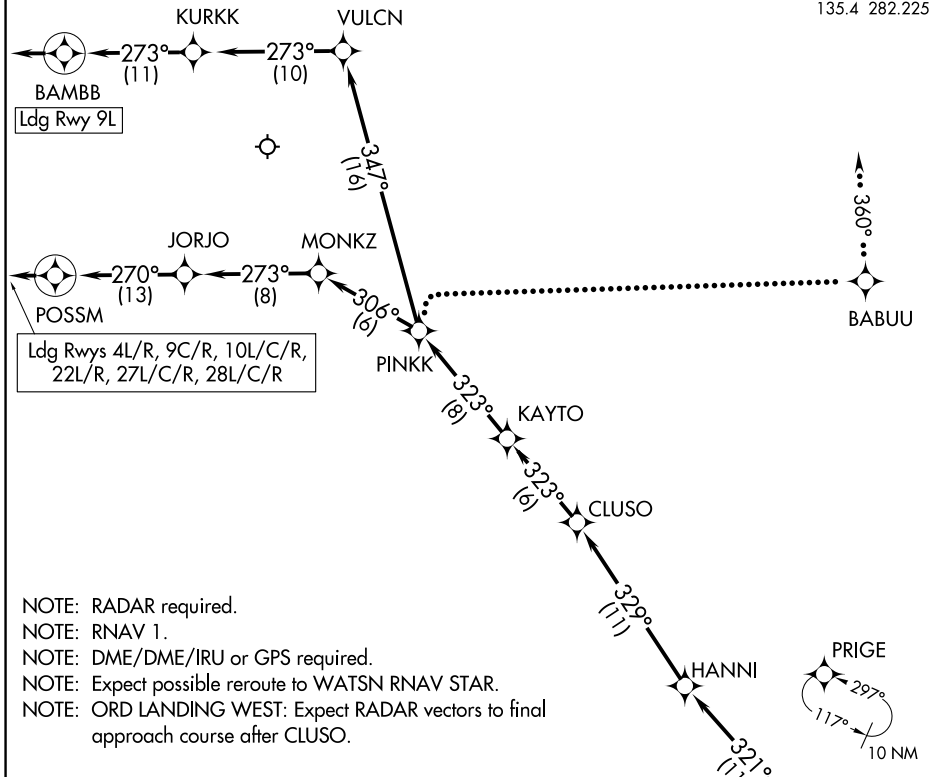
VEECK FIVE ARRIVAL (RNAV) Transition Routes  
VEECK VEECK5) 05NOV20

CHICAGO, ILLINOIS  
CHICAGO O'HARE INTL (ORD)



# VEECK FIVE ARRIVAL (RNAV) Arrival Routes

CHICAGO APP CON  
119.0 292.125  
D-ATIS  
135.4 282.225



- NOTE: RADAR required.
- NOTE: RNAV 1.
- NOTE: DME/DME/IRU or GPS required.
- NOTE: Expect possible reroute to WATSN RNAV STAR.
- NOTE: ORD LANDING WEST: Expect RADAR vectors to final approach course after CLUSO.

## ARRIVAL ROUTE DESCRIPTION

From VEECK on track 302° to BOONE, then on track 321° to HANNI, then on track 329° to CLUSO, then on track 323° to KAYTO, then on track 323° to PINKK.

LANDING RWYS 4L/R, 9C/R, 10L/C/R, 22L/R, 27L/C/R, 28L/C/R:  
From PINKK on track 306° to MONKZ, then on track 273° to JORJO, then on track 270° to POSSM, then on track 270°. Expect RADAR vectors to final approach course.

LANDING RWY 9L: From PINKK on track 347° to VULCN, then on track 273° to KURKK, then on track 273° to BAMBB, then on track 273°. Expect RADAR vectors to final approach course.

### LOST COMMUNICATIONS:

ORD AIRCRAFT LANDING WEST: At PINKK, turn right direct BABUU, maintain 5000, then via 360° heading, intercept localizer and execute ILS or LOC Rwy 28R approach.

ORD AIRCRAFT LANDING EAST: Standard.

NOTE: Chart not to scale.

# VEECK FIVE ARRIVAL (RNAV) Arrival Routes

EC-3, 22 APR 2021 to 20 MAY 2021

EC-3, 22 APR 2021 to 20 MAY 2021