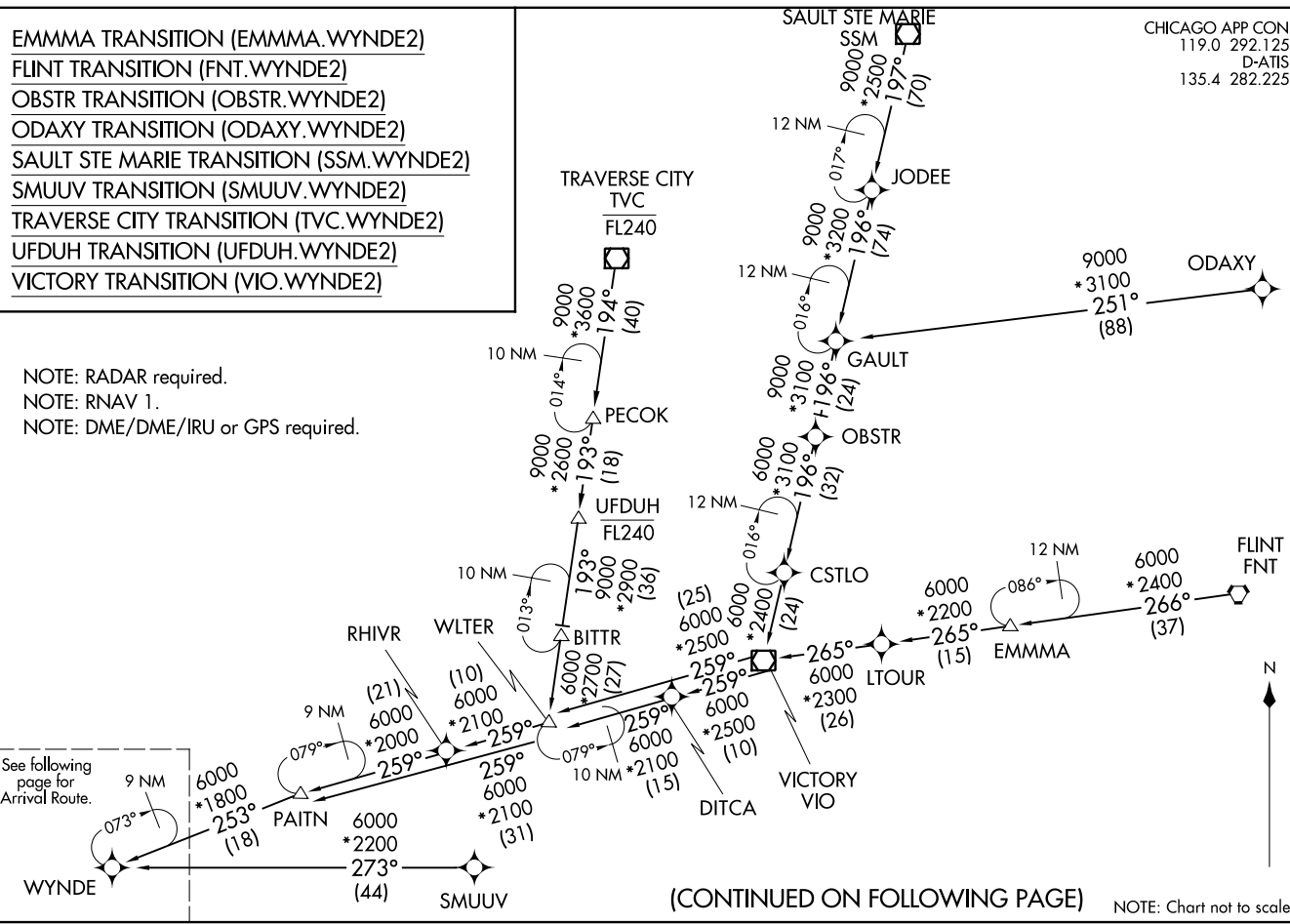


- EMMMA TRANSITION (EMMMA.WYNDE2)
- FLINT TRANSITION (FNT.WYNDE2)
- OBSTR TRANSITION (OBSTR.WYNDE2)
- ODAXY TRANSITION (ODAXY.WYNDE2)
- SAULT STE MARIE TRANSITION (SSM.WYNDE2)
- SMUUV TRANSITION (SMUUV.WYNDE2)
- TRAVERSE CITY TRANSITION (TVC.WYNDE2)
- UFDUH TRANSITION (UFDUH.WYNDE2)
- VICTORY TRANSITION (VIO.WYNDE2)

NOTE: RADAR required.
 NOTE: RNAV 1.
 NOTE: DME/DME/IRU or GPS required.

See following page for Arrival Route.



CHICAGO APP CON
 119.0 292.125
 D-ATIS
 135.4 282.225

WYNDE TWO ARRIVAL (RNAV) Transition Routes
 (WYNDE.WYNDE2) 05NOV20

CHICAGO, ILLINOIS
 CHICAGO O'HARE INTL (ORD)

(WYNDE.WYNDE2) 20310
 WYNDE TWO ARRIVAL (RNAV) Transition Routes

CHICAGO O'HARE INTL (ORD)
 CHICAGO, ILLINOIS

AL-166 (FAA)

(CONTINUED ON FOLLOWING PAGE)

NOTE: Chart not to scale.

ARRIVAL ROUTE DESCRIPTION

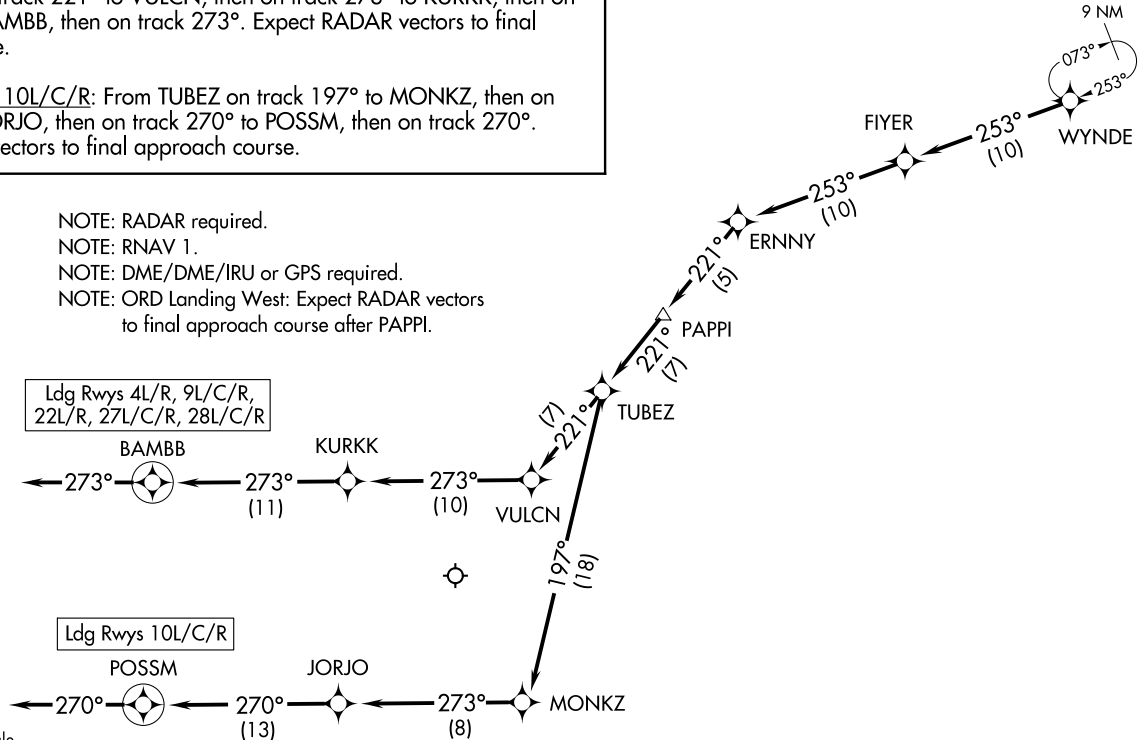
From WYNDE on track 253° to FIYER, then on track 253° to ERNNY, then on track 221° to PAPP1, then on track 221° to TUBEZ.

LANDING RWYS 4L/R, 9L/C/R, 22L/R, 27L/C/R, 28L/C/R:

From TUBEZ on track 221° to VULCN, then on track 273° to KURKK, then on track 273° to BAMB B. Expect RADAR vectors to final approach course.

LANDING RWY 10L/C/R: From TUBEZ on track 197° to MONKZ, then on track 273° to JORJO, then on track 270° to POSSM. Expect RADAR vectors to final approach course.

CHICAGO APP CON
119.0 292.125
D-ATIS
135.4 282.225



- NOTE: RADAR required.
- NOTE: RNAV 1.
- NOTE: DME/DME/IRU or GPS required.
- NOTE: ORD Landing West: Expect RADAR vectors to final approach course after PAPP1.

Ldg Rwy 4L/R, 9L/C/R,
22L/R, 27L/C/R, 28L/C/R

Ldg Rwy 10L/C/R

NOTE: Chart not to scale.

WYNDE TWO ARRIVAL (RNAV) Arrival Routes
(WYNDE: WYNDE2) 05NOV20

CHICAGO, ILLINOIS
CHICAGO O'HARE INTL (ORD)

(WYNDE: WYNDE2) 20310
AL166 (FAA)
WYNDE TWO ARRIVAL (RNAV) Arrival Routes

CHICAGO O'HARE INTL (ORD)
CHICAGO, ILLINOIS