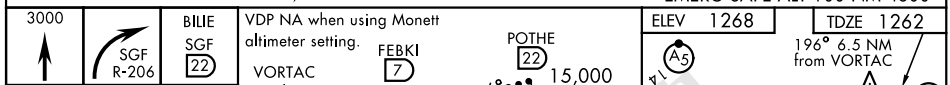
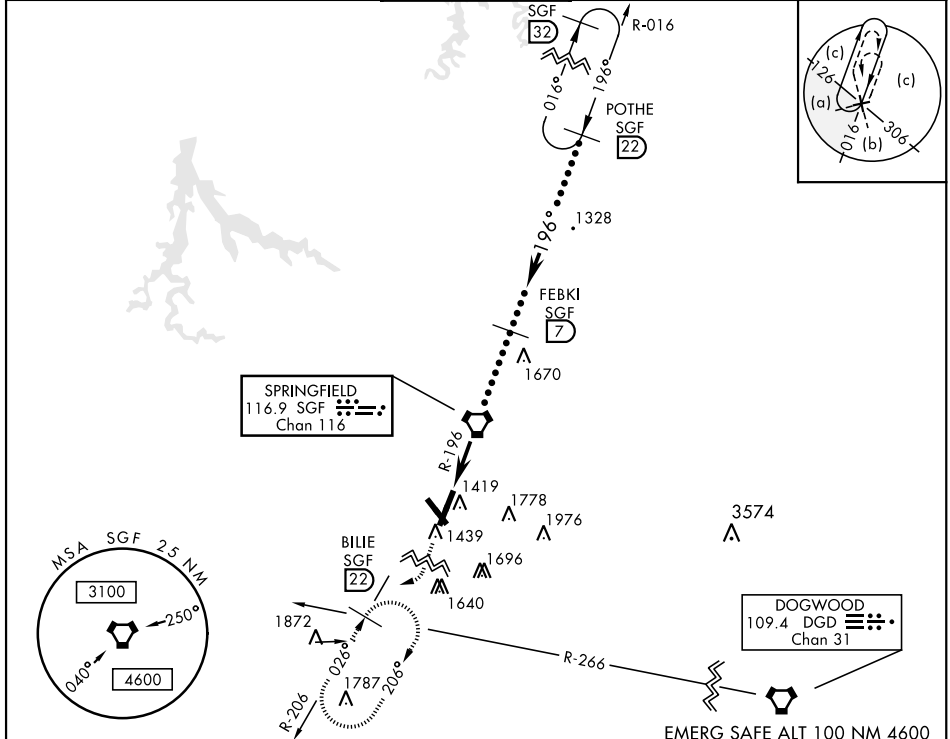


VORTAC SGF 116.9 Chan 116	APCH CRS 196°	Rwy Idg 7003 TDZE 1262 Arprt Elev 1268	JAL-604 [USAF]	SPRINGFIELD-BRANSON NATIONAL (KSGF)
---------------------------------	------------------	---	----------------	-------------------------------------

When local altimeter setting not received, use Monett altimeter setting. MAL S
A4 MISSED APPROACH: Climb to 3000 then right turn via SGF VORTAC R-206 to BILLIE INT/SGF 22 DME and hold.

ATIS 135.125	SPRINGFIELD APP CON 121.1 290.5	SPRINGFIELD TOWER 119.9 257.8	GND CON 121.9 251.15	CLNC DEL 123.675
-----------------	------------------------------------	----------------------------------	-------------------------	---------------------



ELEV 1268		TDZE 1262	
3000		15,000	
VORTAC		POTHE	
BILLIE		FEBKI	
R-196		R-206	
6.5		6.5	
196°		196°	
3400		3400	
3.02%		TCH 47	
EMERG SAFE ALT 100 NM 4600			
ELEV 1268		TDZE 1262	
196° 6.5 NM from VORTAC		1309	
A5		A4	
P		P	
V		V	
A5		A5	
1301		1301	
TWR 1361		TWR 1361	
REIL Rwy 32		REIL Rwy 32	
HIRL Rwy 2-20 and 14-32		HIRL Rwy 2-20 and 14-32	

NC-3, 22 APR 2021 to 20 MAY 2021

NC-3, 22 APR 2021 to 20 MAY 2021