

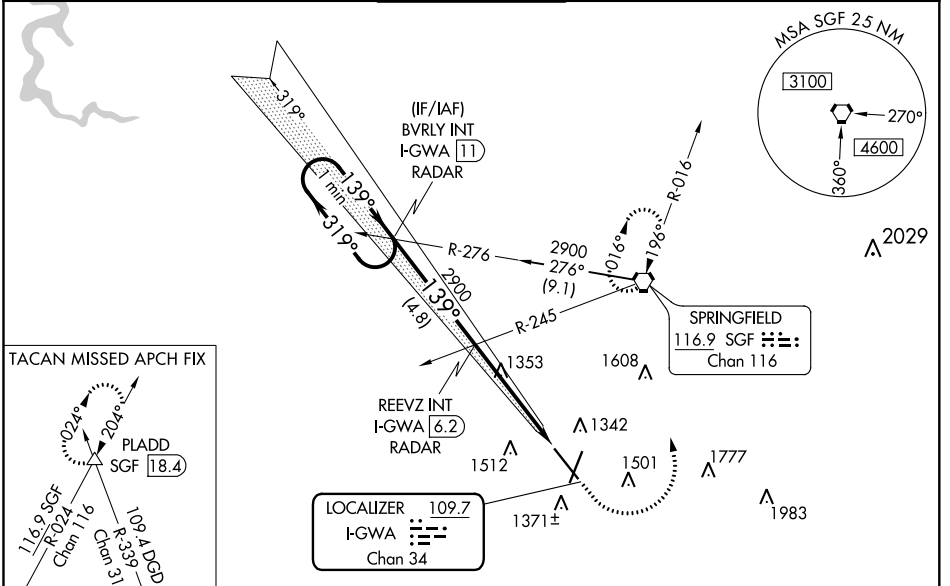
LOC/DME I-GWA <b>109.7</b> Chan <b>34</b>	APP CRS <b>139°</b>	Rwy Idg TDZE Apt Elev	<b>8000</b> <b>1260</b> <b>1268</b>
---	------------------------	-----------------------------	---

# ILS or LOC RWY 14

SPRINGFIELD-BRANSON NATIONAL (SGF)

		MISSED APPROACH: Climb to 1800 then climbing left turn to 2900 to SGF VORTAC and hold. (TACAN aircraft continue on SGF VORTAC R-024 to PLADD INT and hold NE, RT, 204° inbound).
--	--	--

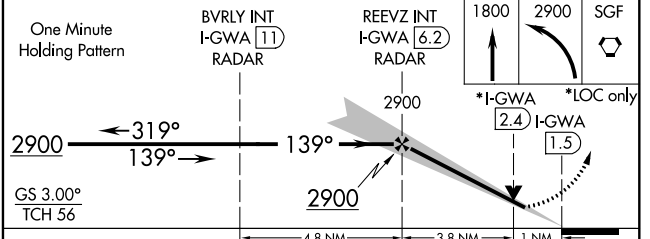
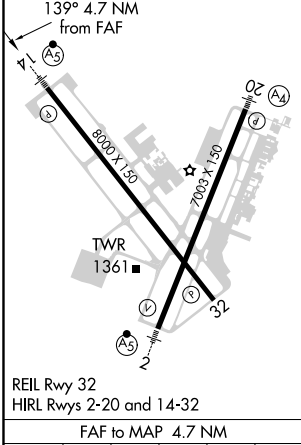
ATIS <b>135.125</b>	SPRINGFIELD APP CON <b>121.1 290.5</b>	SPRINGFIELD TOWER <b>119.9 257.8</b>	GND CON <b>121.9 251.15</b>	CLNC DEL <b>123.675</b>
------------------------	---	---	--------------------------------	----------------------------



NC-3, 22 APR 2021 to 20 MAY 2021

NC-3, 22 APR 2021 to 20 MAY 2021

ELEV 1268	<b>D</b>	TDZE 1260
-----------	----------	-----------



CATEGORY	A	B	C	D
S-ILS 14	1517-3/4 257 (300-3/4)			
S-LOC 14	1620-3/4 360 (400-3/4)			
<b>C</b> CIRCLING	1760-1 492 (500-1)	1820-1 552 (600-1)	1820-1 1/2 552 (600-1/2)	1920-2 652 (700-2)