

LOC/DME I-SGF <b>109.9</b> Chan <b>36</b>	APP CRS <b>019°</b>	Rwy Idg TDZE Apt Elev	<b>7003</b> <b>1265</b> <b>1268</b>
---	------------------------	-----------------------------	---

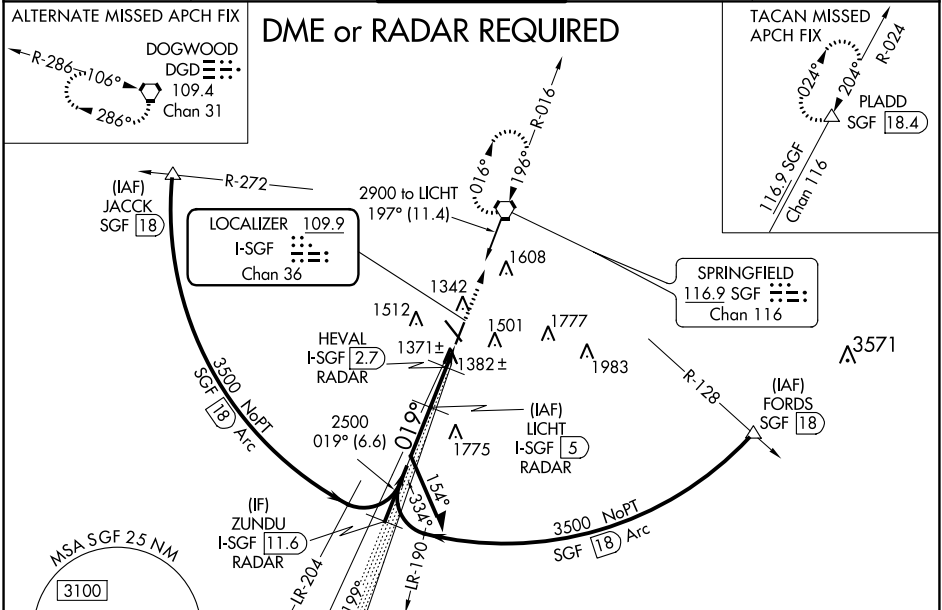
# ILS or LOC RWY 2

## SPRINGFIELD-BRANSON NATIONAL (SGF)

**⚠** DME or RADAR Required. For inop MALSR, increase S-ILS 2 Cat E visibility to RVR 4000, and S-LOC 2 Cat E visibility to 1/4 mile.  
#RVR 1800 authorized with use of FD or AP or HUD to DA.

**MALSR**  
MISSED APPROACH: Climb to 3000 direct SGF VORTAC and hold (TACAN aircraft continue on SGF VORTAC R-024 to PLADD/SGF 18.4 DME and hold northeast, right turn, 204° inbound).

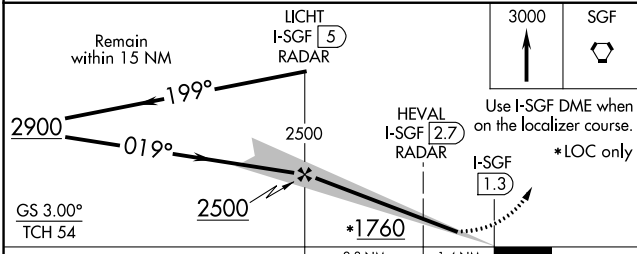
ATIS <b>135.125</b>	SPRINGFIELD APP CON <b>121.1 290.5</b>	SPRINGFIELD TOWER <b>119.9 257.8</b>	GND CON <b>121.9 251.15</b>	CLNC DEL <b>123.675</b>
------------------------	---	---	--------------------------------	----------------------------



NC-3, 22 APR 2021 to 20 MAY 2021

NC-3, 22 APR 2021 to 20 MAY 2021

ELEV 1268	<b>D</b> TDZE 1265
-----------	--------------------



CATEGORY	A	B	C	D	E
S-ILS 2	#1465/24 200 (200-1/2)				
S-LOC 2	1700/24	435 (500-1/2)	1700/40	435 (500-3/4)	
<b>CIRCLING</b>	1760-1 492 (500-1)	1820-1 552 (600-1)	1820-1 1/2 552 (600-1 1/2)	1920-2 652 (700-2)	2080-3 812 (900-3)

HIRL Rwy 2-20 and 14-32  
REIL Rwy 32

Use I-SGF DME when on the localizer course. \*LOC only

FAF to MAP 3.7 NM

Knots	60	90	120	150	180
Min:Sec	3:42	2:28	1:51	1:29	1:14