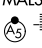


VORTAC SGF 116.9 Chan 116	APP CRS 016°	Rwy Idg TDZE Apt Elev	7003 1265 1268
---	------------------------	-----------------------------	---

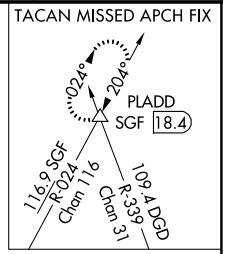
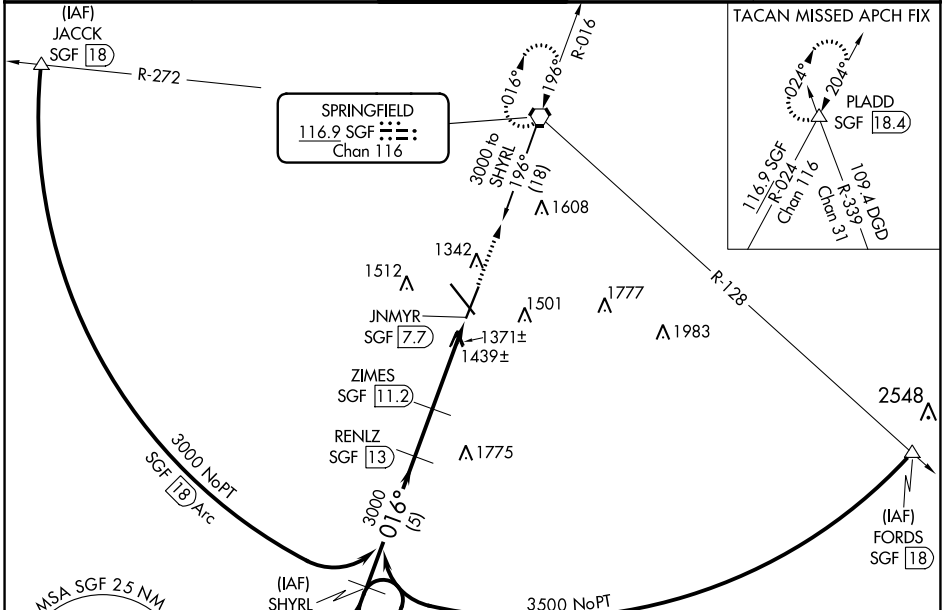
VOR/DME or TACAN RWY 2

SPRINGFIELD-BRANSON NATIONAL (SGF)

⚠ For inoperative MALSR, increase S-2 Cat A and B visibility to RVR 5000 and Cat E to 1½. When local altimeter setting not received, use Monett altimeter setting and increase all MDA 100 feet, increase Circling Cat C to 1¾ mile. VDP NA when using Monett altimeter setting.

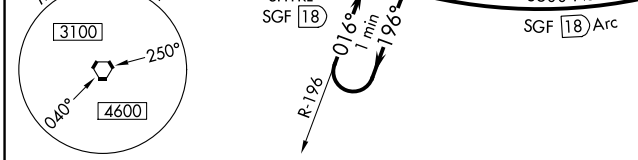
MALSR  MISSED APPROACH: Climb to 3000 direct SGF VORTAC and hold (TACAN Aircraft continue on SGF R-024 to PLADD INT/SGF 18.4 DME and hold, north, right turns, 204° inbound).

ATIS 135.125	SPRINGFIELD APP CON 121.1 290.5	SPRINGFIELD TOWER 119.9 257.8	GND CON 121.9 251.15	CLNC DEL 123.675
------------------------	---	---	--------------------------------	----------------------------



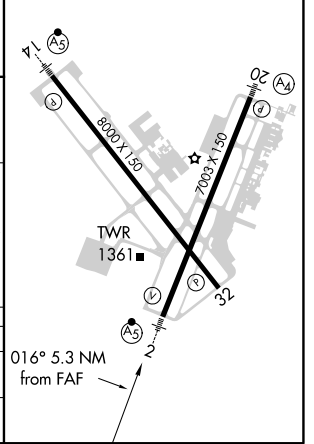
NC-3, 22 APR 2021 to 20 MAY 2021

NC-3, 22 APR 2021 to 20 MAY 2021



ELEV 1268	D	TDZE 1265
-----------	----------	-----------

HIRL Rwy 2-20 and 14-32
REL Rwy 32



One Minute Holding Pattern	SHYRL SGF 18	RENLZ SGF 13	ZIMES SGF 11.2	JNMYR SGF 7.7	3000 SGF
3000	← 196°	→ 016°	3000	→ 016°	3.02° TCH 55
			2440		
	5 NM	1.8 NM	2.3 NM	1.2 NM	

CATEGORY	A	B	C	D	E
S-2	1700/40	435 (500-¾)		1700/50	435 (500-1)
C CIRCLING	1760-1 492 (500-1)	1820-1 552 (600-1)	1820-1½ 552 (600-1½)	1920-2 652 (700-2)	2080-3 812 (900-3)