

LOC I-RDG 109.5	APP CRS 004°	Rwy Idg 5151 TDZE 343 Apt Elev 344
---------------------------	------------------------	---

ILS or LOC RWY 36

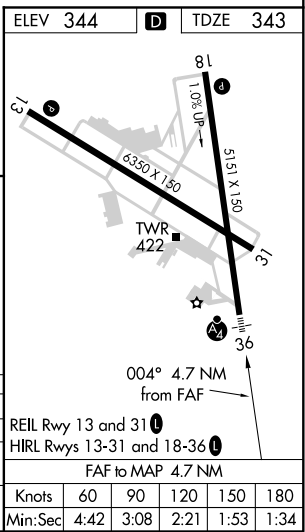
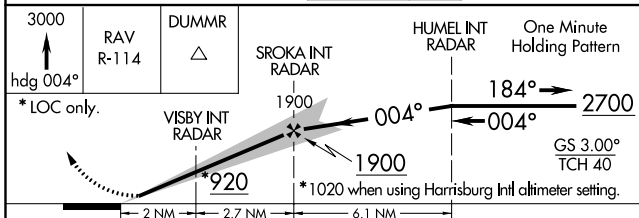
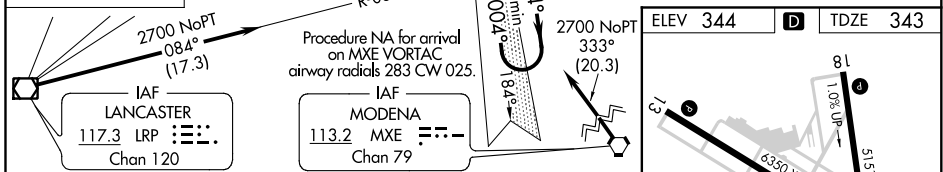
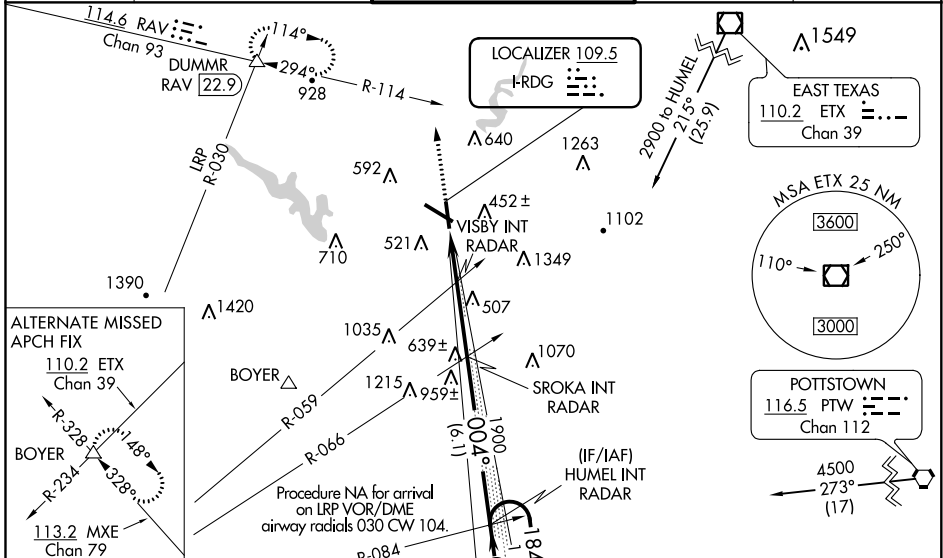
READING RGNL/CARL A SPAATZ FLD (RDG)

⚠ Night Landing: RWY 18, 31 NA. Inoperative table does not apply. When local altimeter setting not received, use Harrisburg Intl altimeter setting and increase S-ILS 36 DA to 686 feet and all Cats visibility 1/4 mile, and increase all MDA 100 feet, and S-LOC 36 Cats C and D visibility 1/4 mile, and Circling Cat B and C visibility 1/4 mile and Cat D visibility 1/2 mile.

MALSF

MISSED APPROACH: Climb to 3000 on heading 004° and RAV VORTAC R-114 to DUMMR INT/RAV 22.9 DME and hold, continue climb-in-hold to 3000.

ATIS 127.1	READING APP CON* 125.15 257.9	READING TOWER* 119.9 (CTAF) 288.3	GND CON 121.9	UNICOM 122.95
----------------------	---	---	-------------------------	-------------------------



CATEGORY	A	B	C	D
S-ILS 36	593-1	250 (300-1)		
S-LOC 36	820-1 477 (500-1)	820-1 1/4 477 (500-1 1/4)	820-1 1/2 477 (500-1 1/2)	
CIRCLING	1020-1 676 (700-1)	1020-2 676 (700-2)	1140-2 1/2 796 (800-2 1/2)	

REIL Rwy 13 and 31					
HIRL Rws 13-31 and 18-36					
FAF to MAP 4.7 NM					
Knots	60	90	120	150	180
Min:Sec	4:42	3:08	2:21	1:53	1:34

NE-4, 22 APR 2021 to 20 MAY 2021

NE-4, 22 APR 2021 to 20 MAY 2021