

|  |                        |   |
|--|------------------------|---|
| WAAS<br>CH <b>45712</b><br><b>W13A</b> | APP CRS<br><b>133°</b> | Rwy Idg <b>6350</b><br>TDZE <b>344</b><br>Apt Elev <b>344</b> |
|--|------------------------|---|

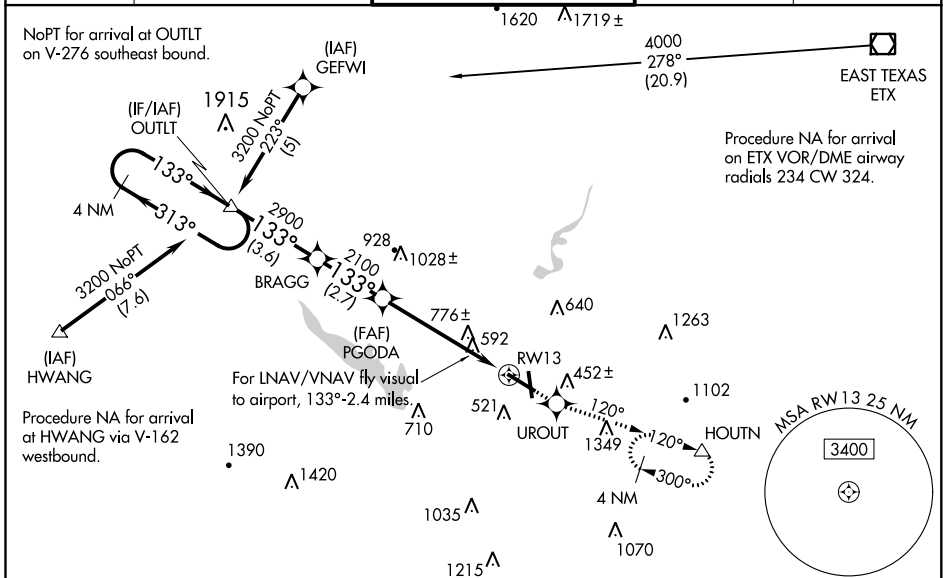
# RNAV (GPS) RWY 13

READING RGNL/CARL A SPAATZ FLD (RDG)

**⚠** Night landing: Rwy 18, 31 NA. For uncorrected Baro-VNAV systems, LNAV/VNAV NA below -15°C (5°F) or above 48°C (115°F). DME/DME RNP-0.3 NA. Helicopter visibility reduction below 3/4 SM NA. VDP NA when using Harrisburg Intl altimeter setting. LNAV/VNAV NA when using Harrisburg altimeter setting. When local altimeter setting not received, use Harrisburg Intl altimeter setting and increase all DA 93 feet and visibility 1/2 mile all Cats and increase all MDA 100 feet, and increase LNAV Cat B/C/D and Circling Cat B/C visibility 1/2 mile, and Circling Cat D visibility 1/2 mile.

**⚠** MISSED APPROACH: Climb to 3000 direct UROUT and via 120° track to HOUTN and hold, continue climb-in-hold to 3000.

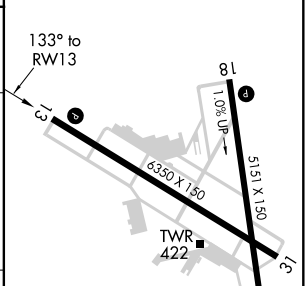
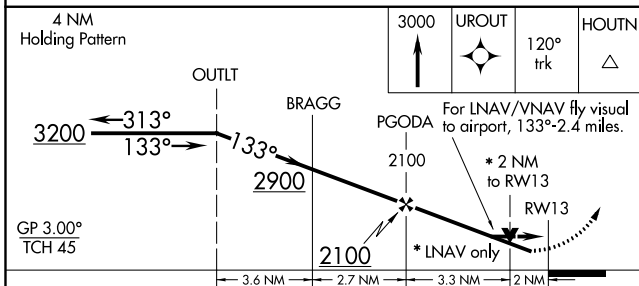
|                      |  |  |                         |                         |
|----------------------|--|--|-------------------------|-------------------------|
| ATIS<br><b>127.1</b> | READING APP CON *<br><b>125.15 257.9</b> | READING TOWER *<br><b>119.9 (CTAF) 288.3</b> | GND CON<br><b>121.9</b> | UNICOM<br><b>122.95</b> |
|----------------------|--|--|-------------------------|-------------------------|



NE-4, 22 APR 2021 to 20 MAY 2021

NE-4, 22 APR 2021 to 20 MAY 2021

|          |   |          |
|----------|---|----------|
| ELEV 344 | D | TDZE 344 |
|----------|---|----------|



| CATEGORY     | A                 | B           | C                             | D                             |
|--------------|-------------------|-------------|-------------------------------|-------------------------------|
| LPV DA       | 926-2 582 (600-2) |             |                               |                               |
| LNAV/VNAV DA | 1170-2            | 826 (900-2) | 1170-2 1/2<br>826 (900-2 1/2) | 1170-2 3/4<br>826 (900-2 3/4) |
| LNAV MDA     | 1040-1            | 696 (700-1) | 1040-2<br>696 (700-2)         | 1040-2 1/4<br>696 (700-2 1/4) |
| CIRCLING     | 1040-1            | 696 (700-1) | 1040-2<br>696 (700-2)         | 1140-2 1/2<br>796 (800-2 1/2) |

REIL Rwy 13 and 31

HIRL Rwy 13-31 and 18-36