

# RNAV (GPS) RWY 18

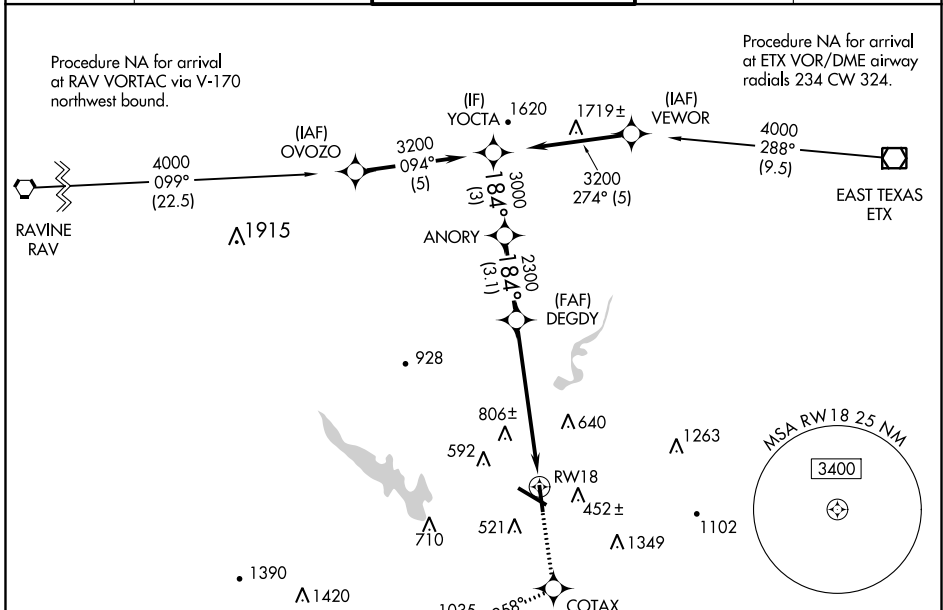
READING RGNL/CARL A SPAATZ FLD (RDG)

APP CRS	Rwy Idg	<b>5151</b>
<b>184°</b>	TDZE	<b>319</b>
	Apt Elev	<b>344</b>

**⚠** Night landing: Rwy 18, 31 NA. DME/DME RNP-0.3 NA. Helicopter visibility reduction below 1 SM NA. When local altimeter setting not received, use Harrisburg Intl altimeter setting and increase all MDA 100 feet, and increase LNAV Cat B visibility ¼ mile and Cats C and D visibility ½ mile, and increase Circling Cats B and C visibility ¼ mile and Cat D visibility ½ mile.

**MISSED APPROACH:** Climb to 3000 direct COTAX and via 258° track to BOYER and hold, continue climb-in-hold to 3000.

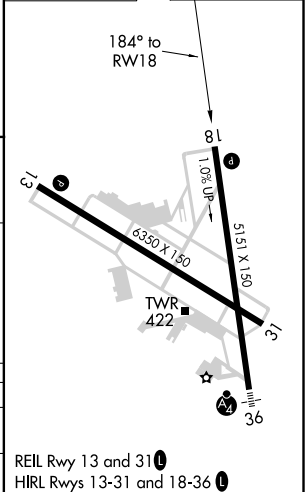
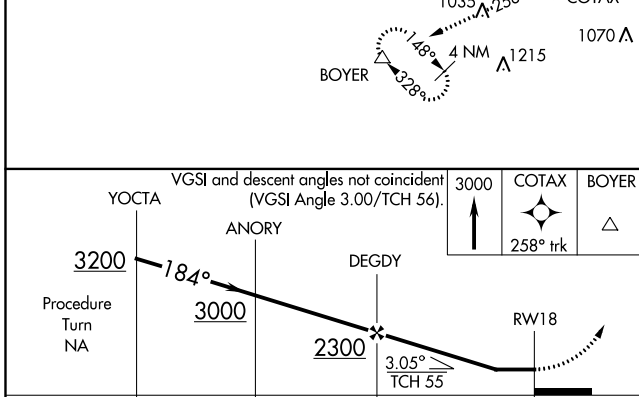
ATIS <b>127.1</b>	READING APP CON ★ <b>125.15 257.9</b>	READING TOWER ★ <b>119.9</b> (CTAF) <b>0 288.3</b>	GND CON <b>121.9</b>	UNICOM <b>122.95</b>
----------------------	--	---	-------------------------	-------------------------



NE-4, 22 APR 2021 to 20 MAY 2021

NE-4, 22 APR 2021 to 20 MAY 2021

ELEV 344	<b>D</b> TDZE 319
----------	-------------------



CATEGORY	A	B	C	D
LNAV MDA	980-1 661 (700-1)		980-1¾ 661 (700-1¾)	980-2 661 (700-2)
CIRCLING	1020-1 676 (700-1)		1020-2 676 (700-2)	1140-2½ 796 (800-2½)

REIL Rwy 13 and 31 **0**  
HIRL Rwy 13-31 and 18-36 **0**

# RNAV (GPS) RWY 18