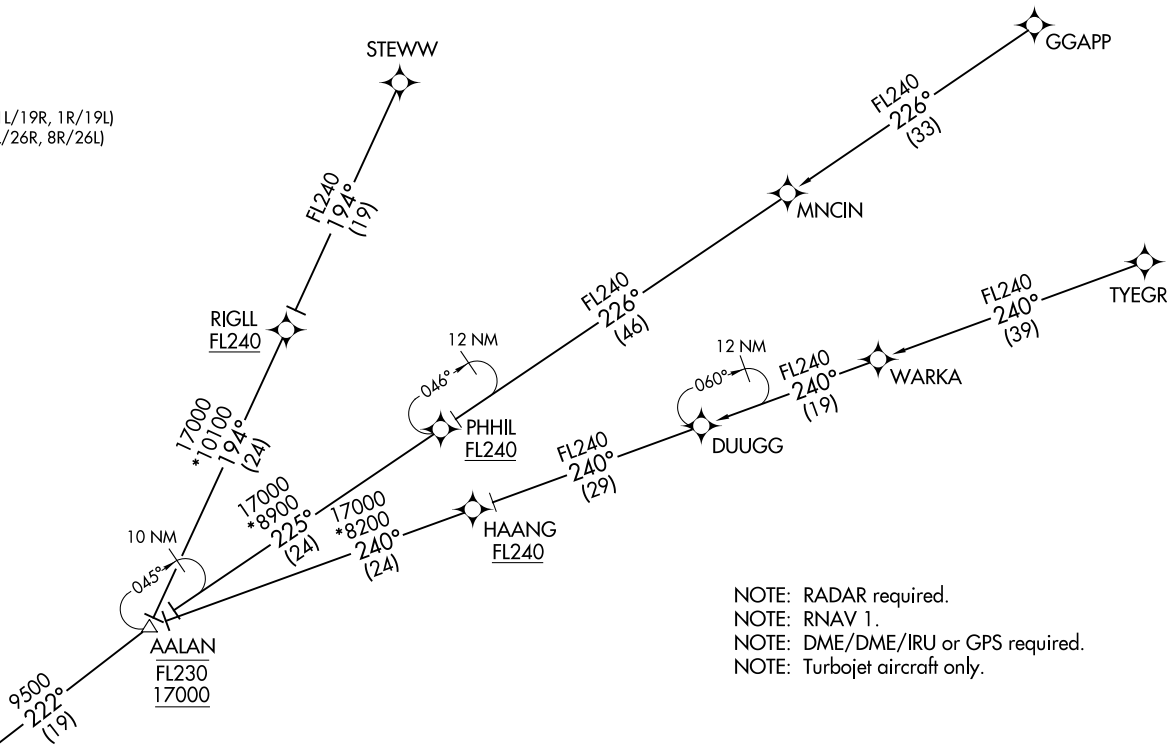


(CHOWW.CHOWW1) 25FEB21

CHOWW ONE ARRIVAL (RNAV) Transition Routes

LAS VEGAS, NEVADA
MC CARRAN INTL (LAS)

LAS VEGAS APP CON
125.6 282.2
D-ATIS
132.4
LAS VEGAS TOWER
118.75 257.8 (Rwys 1L/19R, 1R/19L)
119.9 257.8 (Rwys 8L/26R, 8R/26L)



NOTE: RADAR required.
NOTE: RNAV 1.
NOTE: DME/DME/IRU or GPS required.
NOTE: Turbojet aircraft only.

GGAPP TRANSITION (GGAPP.CHOWW1)
STEWV TRANSITION (STEWV.CHOWW1)
TYEGR TRANSITION (TYEGR.CHOWW1)

See following page
for Arrival Routes

NOTE: Chart not to scale.

(CONTINUED ON FOLLOWING PAGE)

(CHOWW.CHOWW1) 21056

AL-662 (FAA)
CHOWW ONE ARRIVAL (RNAV) Transition Routes

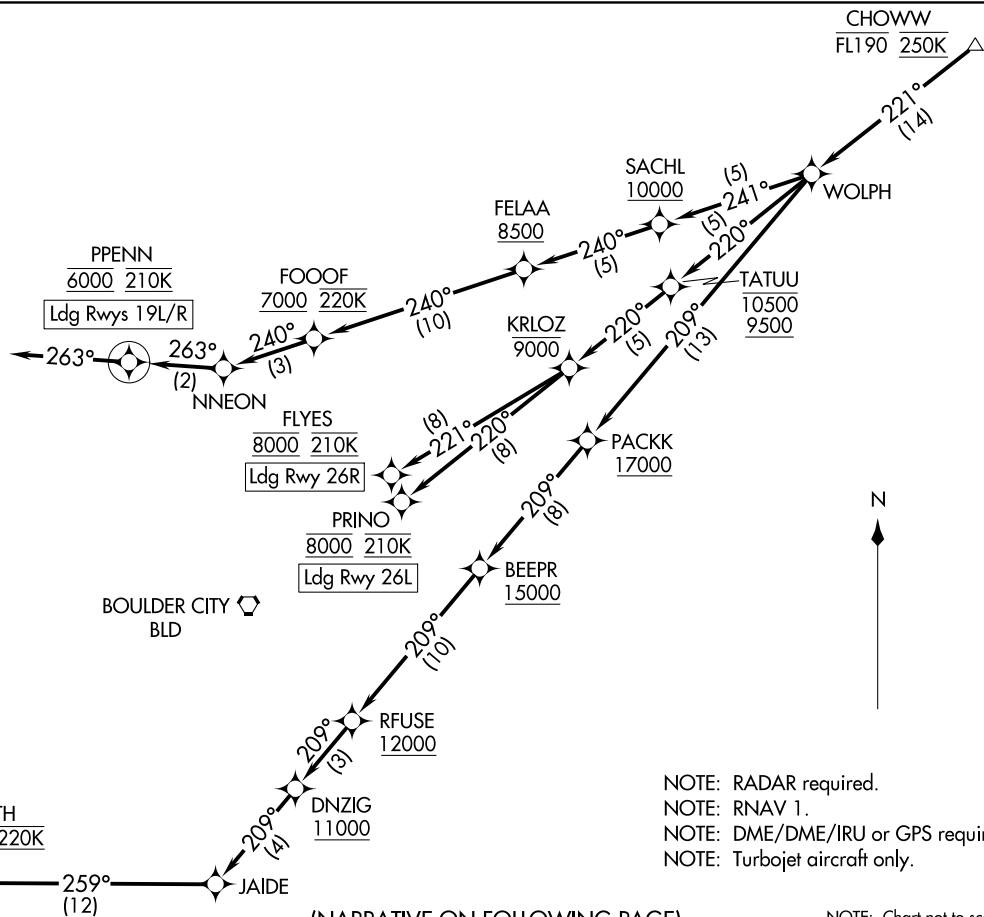
MC CARRAN INTL (LAS)
LAS VEGAS, NEVADA

CHOWW ONE ARRIVAL (RNAV) Arrival Routes
 (CHOWW.CHOWW1) 25FEB21

LAS VEGAS APP CON
 125.6 282.2
 D-ATIS
 132.4
 LAS VEGAS TOWER
 118.75 257.8 (Rwys 1L/19R, 1R/19L)
 119.9 257.8 (Rwys 8L/26R, 8R/26L)

LAS VEGAS LAS

LAS VEGAS, NEVADA
 MC CARRAN INTL (LAS)



(CHOWW.CHOWW1) 21056
 A-662 (FAA)
 CHOWW ONE ARRIVAL (RNAV) Arrival Routes
 LAS VEGAS, NEVADA
 MC CARRAN INTL (LAS)

(NARRATIVE ON FOLLOWING PAGE)

NOTE: RADAR required.
 NOTE: RNAV 1.
 NOTE: DME/DME/IRU or GPS required.
 NOTE: Turbopjet aircraft only.

NOTE: Chart not to scale.

ARRIVAL ROUTE DESCRIPTION

From CHOWW on track 221° to WOLPH.

LANDING RUNWAY 1L: From WOLPH on track 209° to cross PACKK at or above 17000, then on track 209° to cross BEEPR at or above 15000, then on track 209° to cross RFUSE at or above 12000, then on track 209° to cross DNZIG at or above 11000, then on track 209° to JAIDE, then on track 259° to cross TUUTH between 8000 and 10000 and at 220K, then on track 306° to cross TRREY at or above 7000 and at 210K. Expect ILS or LOC RWY 1L approach.

LANDING RUNWAY 1R: From WOLPH on track 209° to cross PACKK at or above 17000, then on track 209° to cross BEEPR at or above 15000, then on track 209° to cross RFUSE at or above 12000, then on track 209° to cross DNZIG at or above 11000, then on track 209° to JAIDE, then on track 259° to cross TUUTH between 8000 and 10000 and at 220K, then on track 319° to cross BUHLL at 7000 and at 210K, then on track 334°. Expect RADAR vectors to final approach course.

LANDING RUNWAYS 19L/R: From WOLPH on track 241° to cross SACHL at or above 10000, then on track 240° to cross FELAA at or above 8500, then on track 240° to cross FOOOF at or above 7000 and at 220K, then on track 240° to NNEON, then on track 263° to cross PPENN at 6000 and at 210K, then on track 263°. Expect RADAR vectors to final approach course.

LANDING RUNWAY 26L: From WOLPH on track 220° to cross TATUU between 9500 and 10500, then on track 220° to cross KRLOZ at or below 9000, then on track 220° to cross PRINO at 8000 and at 210K. Expect ILS or LOC RWY 26L approach.

LANDING RUNWAY 26R: From WOLPH on track 220° to cross TATUU between 9500 and 10500, then on track 220° to cross KRLOZ at or below 9000, then on track 221° to cross FLYES at 8000 and at 210K. Expect ILS or LOC RWY 26R approach.

LOST COMMUNICATIONS

LANDING RUNWAY 1L: At TRREY execute ILS or LOC RWY 1L approach.

LANDING RUNWAY 1R: At BUHLL execute RNAV (GPS) RWY 1R approach.

LANDING RUNWAY 19L: at PPENN execute RNAV (RNP) RWY 19L approach, if unable, proceed visually via last track to intercept the final approach course; if unable, maintain 7000 proceed direct LAS VORTAC then direct BLD VORTAC and execute ILS or LOC RWY 26L approach.

LANDING RUNWAY 26L: At PRINO execute ILS or LOC RWY 26L approach.

LANDING RUNWAY 26R: At FLYES execute ILS or LOC RWY 26R approach.

SW-4, 22 APR 2021 to 20 MAY 2021

SW-4, 22 APR 2021 to 20 MAY 2021