

COKTL ONE ARRIVAL (RNAV) Transition Routes

LAS VEGAS APP CON

125.025 379.15

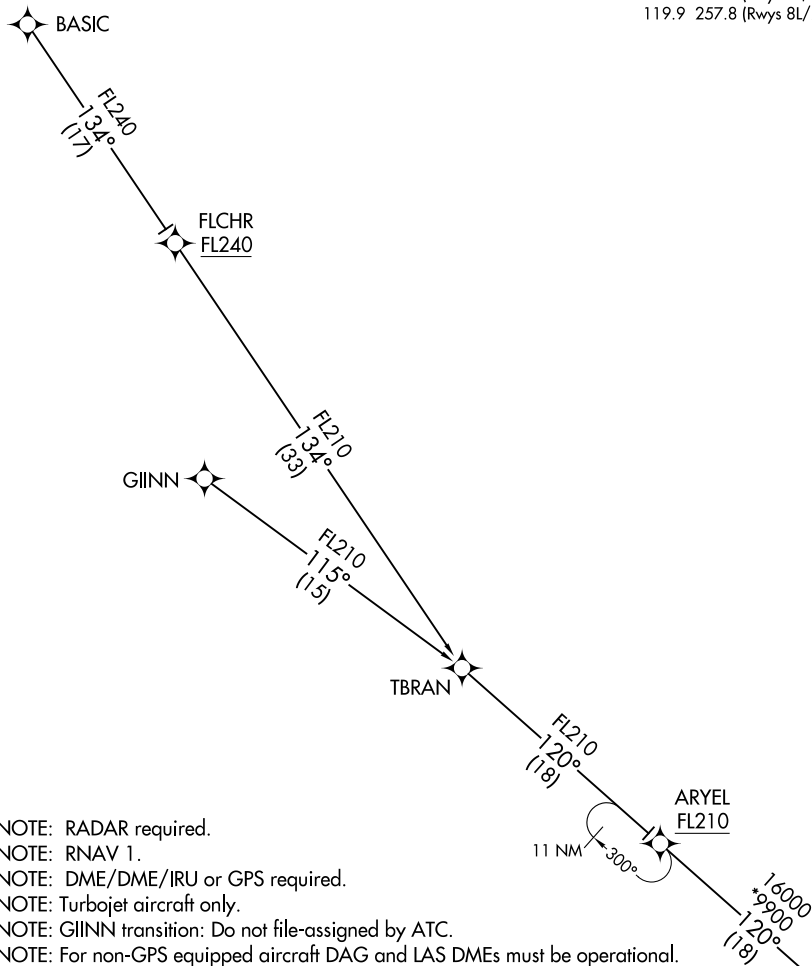
D-ATIS

132.4

LAS VEGAS TOWER

118.75 257.8 (Rwys 1L/19R, 1R/19L)

119.9 257.8 (Rwys 8L/26R, 8R/26L)



NOTE: RADAR required.

NOTE: RNAV 1.

NOTE: DME/DME/IRU or GPS required.

NOTE: Turbojet aircraft only.

NOTE: GIINN transition: Do not file-assigned by ATC.

NOTE: For non-GPS equipped aircraft DAG and LAS DMEs must be operational.

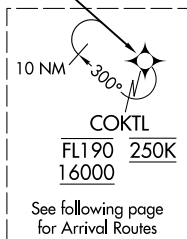
(CONTINUED ON FOLLOWING PAGE)

BASIC TRANSITION (BASIC.COKTL1)

FLCHR TRANSITION (FLCHR.COKTL1)

GIINN TRANSITION (GIINN.COKTL1)

NOTE: Chart not to scale.



COKTL	
FL190	250K
16000	

See following page for Arrival Routes

COKTL ONE ARRIVAL (RNAV) Transition Routes

NOTE: RADAR required.
NOTE: RNAV 1.
NOTE: DME/DME/IRU or GPS required.
NOTE: Turbojet aircraft only.
NOTE: For non-GPS equipped aircraft DAG and LAS DMEs must be operational.

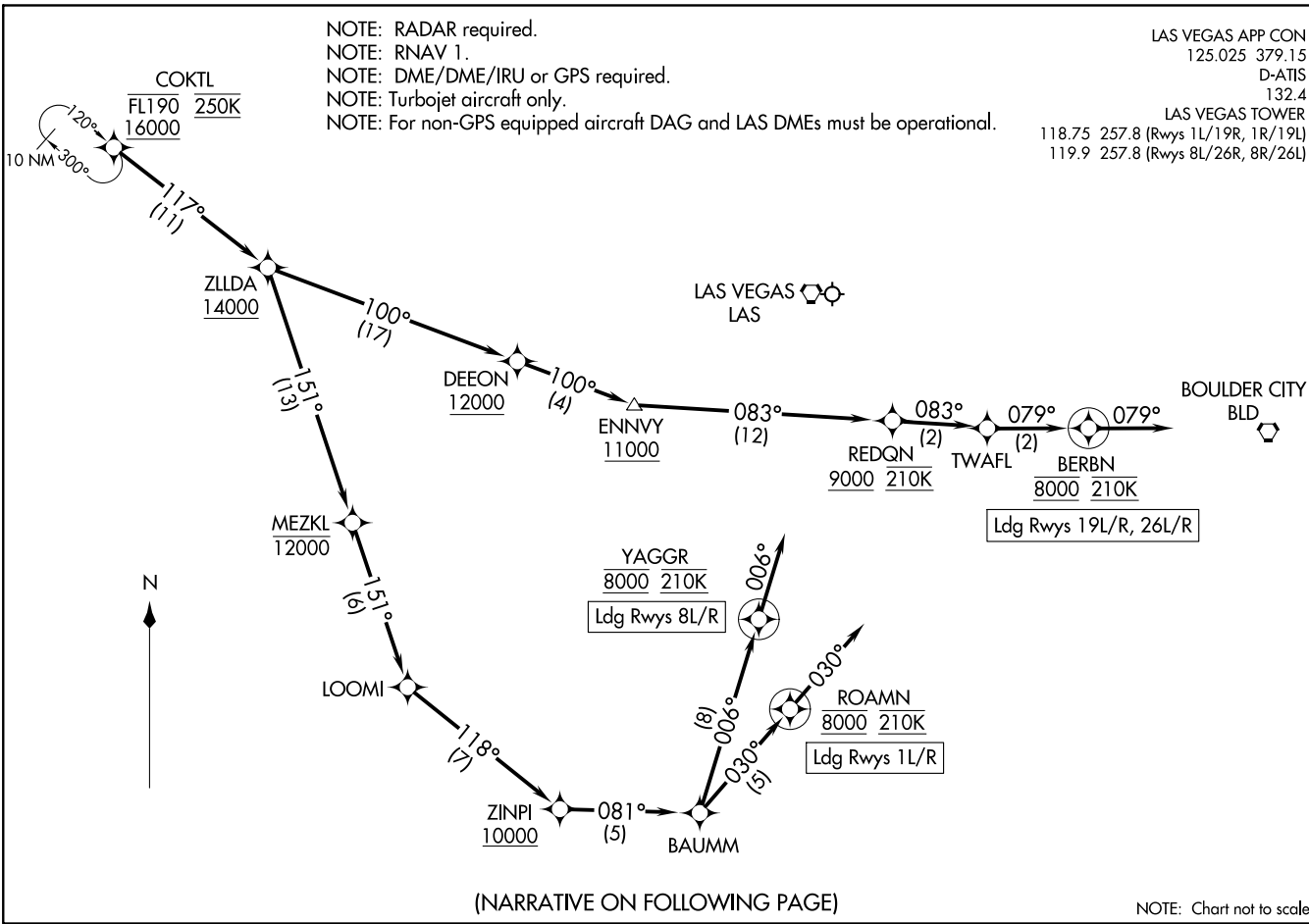
LAS VEGAS APP CON
125.025 379.15
D-ATIS
132.4

LAS VEGAS TOWER
118.75 257.8 (Rwys 1L/19R, 1R/19L)
119.9 257.8 (Rwys 8L/26R, 8R/26L)

COKTL ONE ARRIVAL (RNAV) Arrival Routes
(COKTL.COKTL1) 25FEB21

Arrival Routes

LAS VEGAS, NEVADA
MC CARRAN INTL (LAS)



(COKTL.COKTL1) 21056
COKTL ONE ARRIVAL (RNAV) Arrival Routes

AL-662 (FAA)

MC CARRAN INTL (LAS)
LAS VEGAS, NEVADA

(NARRATIVE ON FOLLOWING PAGE)

NOTE: Chart not to scale.

ARRIVAL ROUTE DESCRIPTION

From COKTL on track 117° to cross ZLLDA at or above 14000.

LANDING RUNWAYS 1L/R: From ZLLDA on track 151° to cross MEZKL at or below 12000, then on track 151° to LOOMI, then on track 118° to cross ZINPI at or above 10000, then on track 081° to BAUMM, then on track 030° to cross ROAMN at 8000 and at 210K, then on track 030°. Expect RADAR vectors to final approach course.

LANDING RUNWAYS 8L/R: From ZLLDA on track 151° to cross MEZKL at or below 12000, then on track 151° to LOOMI, then on track 118° to cross ZINPI at or above 10000, then on track 081° to BAUMM, then on track 006° to cross YAGGR at 8000 and at 210K, then on track 006°. Expect RADAR vectors to final approach course.

LANDING RUNWAYS 19L/R, 26L/R: From ZLLDA on track 100° to cross DEEON at or above 12000, then on track 100° to cross ENNVY at or above 11000, then on track 083° to cross REDQN at or above 9000 and at 210K, then on track 083° to TWAFL, then on track 079° to cross BERBN at 8000 and at 210K, then on track 079°. Expect RADAR vectors to final approach course.

LOST COMMUNICATIONS

LANDING RUNWAY 1L: At ROAMN execute ILS or LOC RWY 1L approach.

LANDING RUNWAY 8R: at YAGGR execute RNAV (RNP) RWY 8R approach, if unable, proceed visually via last track to intercept the final approach course; if unable, maintain 7000 proceed direct LAS VORTAC then direct BLD VORTAC and execute ILS or LOC RWY 26L approach.

LANDING RUNWAY 26L: At BERBN execute ILS or LOC RWY 26L approach.

LANDING RUNWAY 26R: At BERBN execute ILS or LOC RWY 26R approach.

SW-4, 22 APR 2021 to 20 MAY 2021

SW-4, 22 APR 2021 to 20 MAY 2021