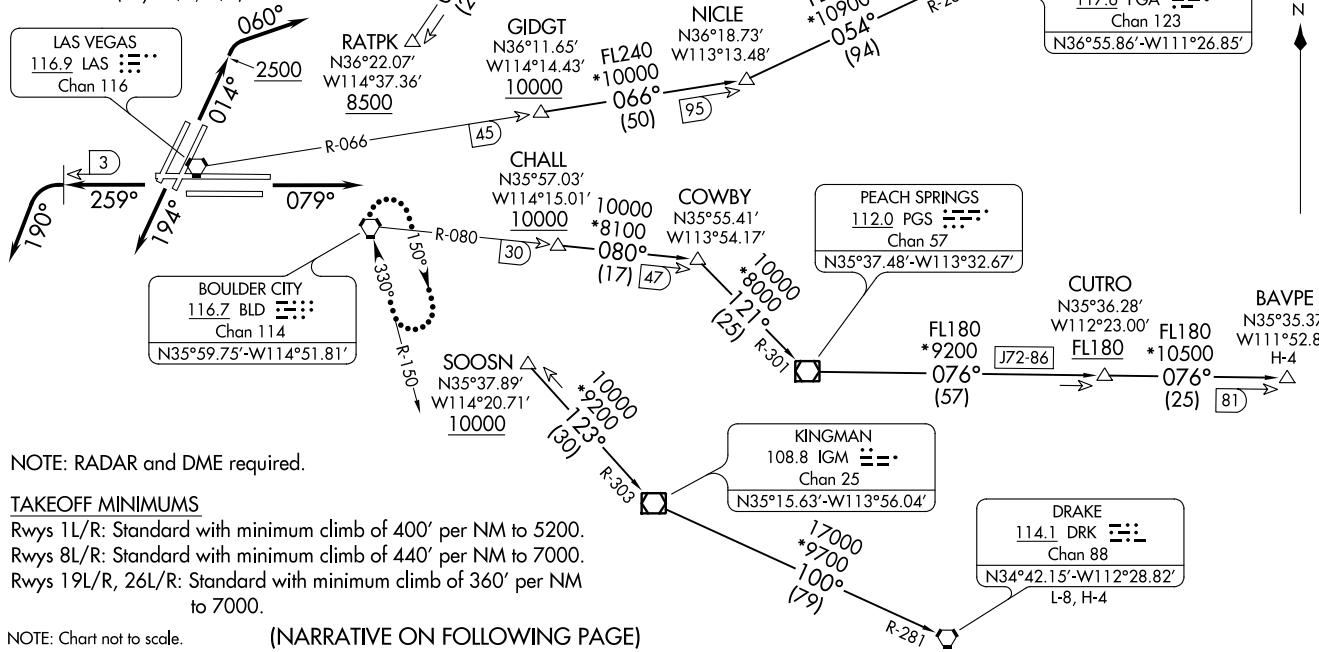


D-ATIS  
132.4  
CLNC DEL  
118.0  
CPDLC  
GND CON  
121.1 270.8 E of 1R/19L  
121.9 254.3 W of 1R/19L  
LAS VEGAS TOWER  
118.75 257.8 (Rwys 1L/R, 19L/R)  
119.9 257.8 (Rwys 8L/R, 26L/R)  
LAS VEGAS DEP CON  
125.9 307.25 (Rwys 19L/R, 26L/R)  
133.95 353.7 (Rwys 1L/R, 8L/R)

**TOP ALTITUDE:  
7000**



NOTE: RADAR and DME required.

**TAKEOFF MINIMUMS**

Rwys 1L/R: Standard with minimum climb of 400' per NM to 5200.  
Rwys 8L/R: Standard with minimum climb of 440' per NM to 7000.  
Rwys 19L/R, 26L/R: Standard with minimum climb of 360' per NM to 7000.

NOTE: Chart not to scale.

(NARRATIVE ON FOLLOWING PAGE)



DEPARTURE ROUTE DESCRIPTION

TAKEOFF RUNWAYS 1L/R: Climb on heading 014° to 2500, then climbing right turn heading 060°, thence. . . .

TAKEOFF RUNWAYS 8L/R: Climb on heading 079°, thence. . . .

TAKEOFF RUNWAYS 19L/R: Climb on heading 194°, thence. . . .

TAKEOFF RUNWAYS 26L/R: Climb on heading 259° until LAS VORTAC 3 DME, then climbing left turn heading 190°, thence. . . .

. . . .RADAR vectors to transition or assigned route. Maintain 7000, expect clearance to filed altitude two minutes after departure.

LOST COMMUNICATIONS: If no contact with ATC upon reaching 7000, proceed direct BLD VORTAC then climb in BLD VORTAC holding pattern to appropriate MEA for route of flight.

BAVPE TRANSITION (HOOVR7.BAVPE): From over CHALL on BLD R-080 and PGS R-301 to PGS VOR/DME, then on PGS R-076 to BAVPE.

DOVE CREEK TRANSITION (HOOVR7.DVC): From over GIDGT on LAS R-066 to NICLE, then on PGA R-234 to PGA VOR/DME, then on PGA R-053 and DVC R-233 to DVC VORTAC.

DRAKE TRANSITION (HOOVR7.DRK): From over SOOSN on IGM R-303 to IGM VOR/DME, then on IGM R-100 and DRK R-281 to DRK VORTAC.

MILFORD TRANSITION (HOOVR7.MLF): From over RATPK on MMM R-199 to MMM VORTAC, then on MMM R-016 and MLF R-197 to MLF VORTAC.

SW-4, 22 APR 2021 to 20 MAY 2021

SW-4, 22 APR 2021 to 20 MAY 2021