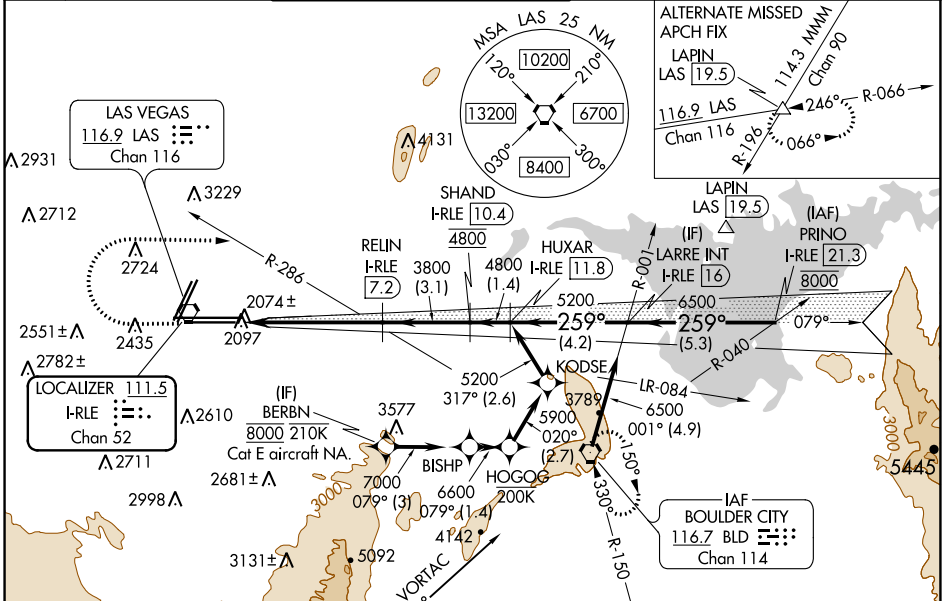


LOC/DME I-RLE <b>111.5</b> Chan 52	APP CRS <b>259°</b>	Rwy Idg TDZE Apt Elev	26L <b>10526</b> <b>2069</b> <b>2181</b>	26R <b>12638</b> <b>2067</b> <b>2181</b>
--	------------------------	-----------------------------	---	---

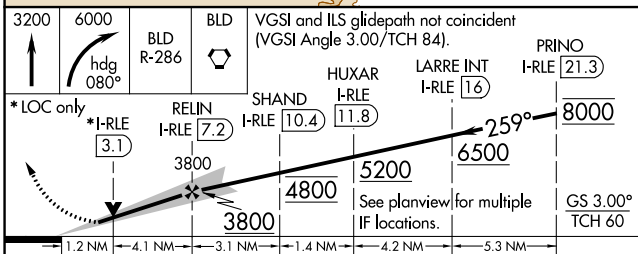
# ILS or LOC RWY 26L

MC CARRAN INTL (LAS)

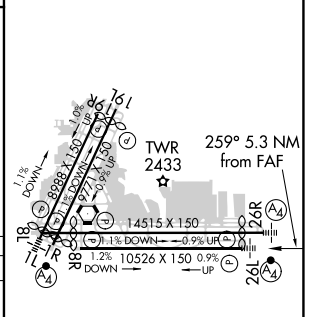
DME required. From BERBN: RNP APCH-GPS required.		MALS Rwy 26L	MALS Rwy 26R	MISSED APPROACH: Climb to 3200 then climbing right turn to 6000 on heading 080° and BLD R-286 to BLD VORTAC and hold, continue climb-in-hold to 6000.		
Inop table does not apply to S-ILS 26L and Sidestep 26R. For inop ALS, increase S-LOC 26L Cat C/D/E visibility to 1½ SM.						
D-ATIS <b>132.4</b>	LAS VEGAS APP CON <b>125.025 379.15</b> (West) <b>125.6 282.2</b> (East)	LAS VEGAS TOWER <b>118.75 257.8</b> (Rwy 1L/19R, 1R/19L) <b>119.9 257.8</b> (Rwy 8L/26R, 8R/26L)		GND CON <b>121.1 270.8</b> E of 1R/19L <b>121.9 254.3</b> W of 1R/19L	CLNC DEL <b>118.0</b>	CPDLC



ELEV 2181	TDZE 26L 2069	TDZE 26R 2067
-----------	---------------	---------------



CATEGORY	A	B	C	D	E
S-ILS 26L	2269-¾ 200 (100-¾)				
S-LOC 26L	2520-¾ 451 (400-¾)	2520-1 451 (400-1)			
SIDESTEP 26R	2560-1 493 (400-1)	2560-1½ 493 (400-1½)	2560-2 493 (400-2)		
CIRCLING	3020-1¼ 839 (900-1¼)	3060-1¼ 879 (900-1¼)	3100-2¾ 919 (1000-2¾)	3540-3 1359 (1400-3)	



MIRL Rwy 1R-19L	FAF to MAP 5.3 NM				
REIL Rws 1R, 8R, 19L and 19R					
HIRL Rws 1L-19R, 8L-26R and 8R-26L					
Knots	60	90	120	150	180
Min:Sec	5:18	3:32	2:39	2:07	1:46

SW-4, 22 APR 2021 to 20 MAY 2021

SW-4, 22 APR 2021 to 20 MAY 2021