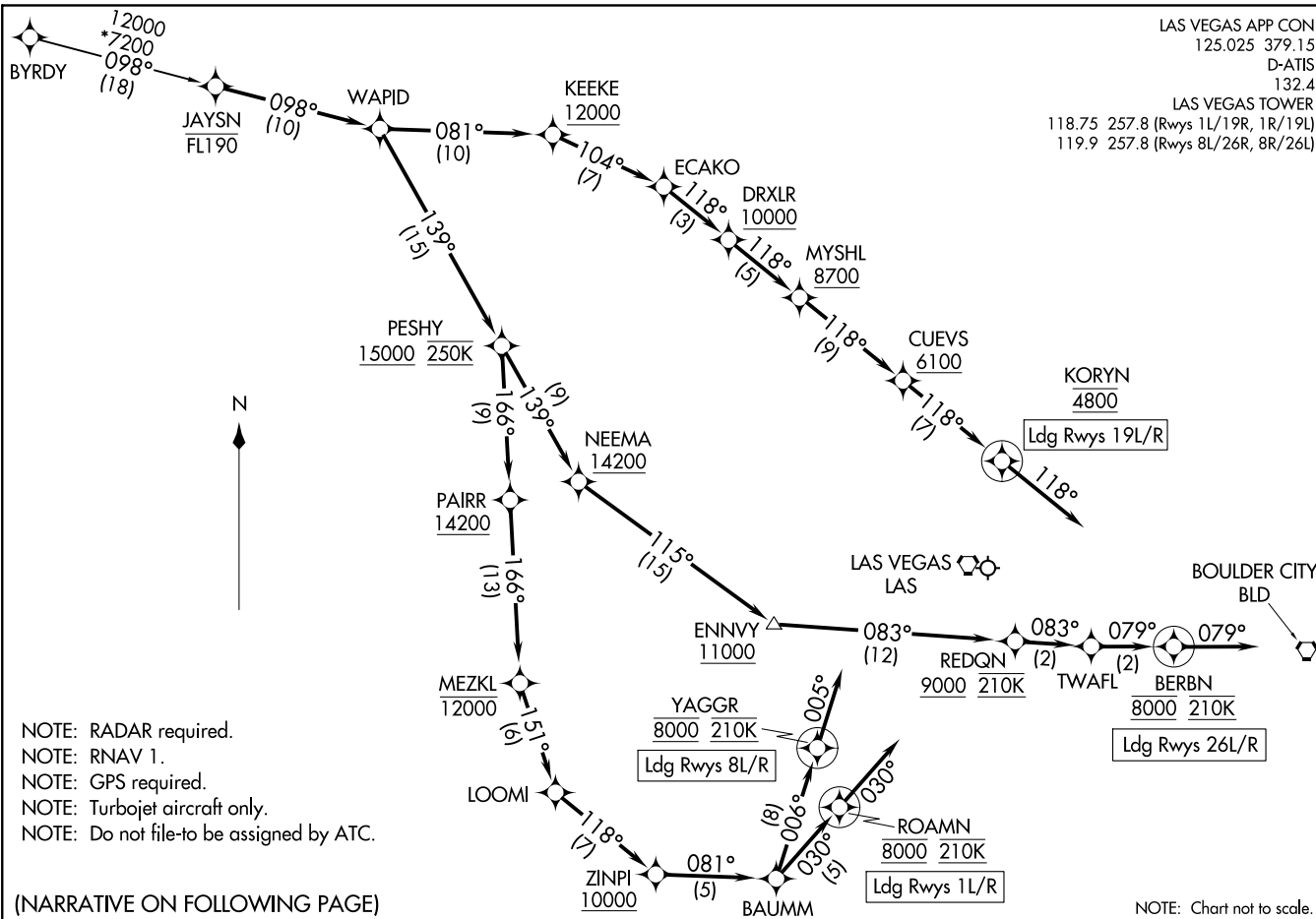


JAYSN ONE ARRIVAL (RNAV)
(JAYSN.JAYSN1) 25FEB21

(JAYSN.JAYSN1) 21056
JAYSN ONE ARRIVAL (RNAV)

LAS VEGAS APP CON
125.025 379.15
D-ATIS
132.4
LAS VEGAS TOWER
118.75 257.8 (Rwys 1L/19R, 1R/19L)
119.9 257.8 (Rwys 8L/26R, 8R/26L)



- NOTE: RADAR required.
- NOTE: RNAV 1.
- NOTE: GPS required.
- NOTE: Turbojet aircraft only.
- NOTE: Do not file-to be assigned by ATC.

(NARRATIVE ON FOLLOWING PAGE)

NOTE: Chart not to scale.

ARRIVAL ROUTE DESCRIPTION

BYRDY TRANSITION (BYRDY.JAYSN1)

From JAYSN on track 098° to WAPID.

LANDING RUNWAYS 1L/R: From WAPID on track 139° to cross PESHY at or above 15000 and at 250K, then on track 166° to cross PAIRR at or above 14200, then on track 166° to cross MEZKL at or below 12000, then on track 151° to LOOMI, then on track 118° to cross ZINPI at or above 10000, then on track 081° to BAUMM, then on track 030° to cross ROAMN at 8000 and at 210K, then on track 030°. Expect RADAR vectors to final approach course.

LANDING RUNWAYS 8L/R: From WAPID on track 139° to cross PESHY at or above 15000 and at 250K, then on track 166° to cross PAIRR at or above 14200, then on track 166° to cross MEZKL at or below 12000, then on track 151° to LOOMI, then on track 118° to cross ZINPI at or above 10000, then on track 081° to BAUMM, then on track 006° to cross YAGGR at 8000 and at 210K, then on heading 005° or as assigned by ATC. Expect RADAR vectors to final approach course.

LANDING RUNWAYS 19L/R: From WAPID on track 081° to cross KEEKE at or above 12000, then on track 104° to ECAKO, then on track 118° to cross DRXLR at or above 10000, then on track 118° to cross MYSHL at or above 8700, then on track 118° to cross CUEVS at or above 6100, then on track 118° to cross KORYN at 4800, then on track 118°. Expect RADAR vectors to final approach course.

LANDING RUNWAYS 26L/R: From WAPID on track 139° to cross PESHY at or above 15000 and at 250K, then on track 139° to cross NEEMA at or above 14200, then on track 115° to cross ENNVY at or above 11000, then on track 083° to cross REDQN at or above 9000 and at 210K, then on track 083° to TWAFL, then on track 079° to cross BERBN at 8000 and at 210K, then on track 079°. Expect RADAR vectors to final approach course.

LOST COMMUNICATIONS

LANDING RUNWAY 1L: At ROAMN execute ILS or LOC RWY 1L approach.

LANDING RUNWAY 8R: at YAGGR execute RNAV (RNP) RWY 8R approach, if unable, proceed visually via last track to intercept the final approach course; if unable, maintain 7000 direct LAS VORTAC then direct BLD VORTAC and execute ILS or LOC RWY 26L approach.

LANDING RUNWAY 19L: at KORYN proceed visually via last track to intercept the final approach course; if unable, maintain 7000 proceed direct LAS VORTAC then direct BLD VORTAC and execute ILS or LOC RWY 26L approach.

LANDING RUNWAY 26L: At BERBN execute ILS or LOC RWY 26L approach.

LANDING RUNWAY 26R: At BERBN execute ILS or LOC RWY 26R approach.

SW-4, 22 APR 2021 to 20 MAY 2021

SW-4, 22 APR 2021 to 20 MAY 2021