

JOHR ONE DEPARTURE (RNAV) Departure Routes
 (JOHR1 .JOHR) 25FEB21
 LAS VEGAS, NEVADA
 MC CARRAN INTL (LAS)

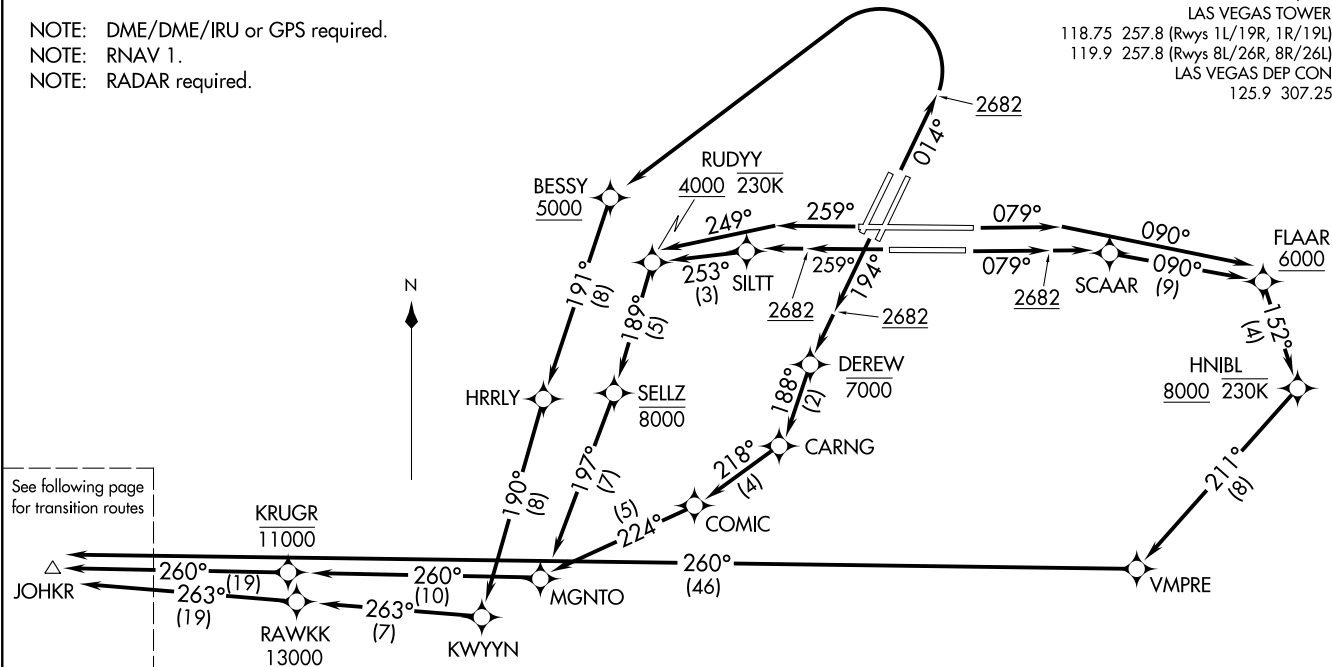
TAKEOFF MINIMUMS

Rwy 1L: Standard with minimum climb of 514' per NM to 4900.
 Rwy 1R: Standard with minimum climb of 526' per NM to 4800.
 Rwys 8L/R: Standard with minimum climb of 500' per NM to 2682, then 219' per NM to 6300.
 Rwys 19L/R: Standard with minimum climb of 500' per NM to 2682, then 334' per NM to 8900.
 Rwys 26L/R: Standard with minimum climb of 500' per NM to 2682, then 345' per NM to 8900.

NOTE: DME/DME/IRU or GPS required.
 NOTE: RNAV 1.
 NOTE: RADAR required.

**TOP ALTITUDE:
 FL190**

D-ATIS 132.4
 CLNC DEL 118.0
 CPDLC
 GND CON 121.1 270.8 E of 1R/19L
 121.9 254.3 W of 1R/19L
 LAS VEGAS TOWER
 118.75 257.8 (Rwys 1L/19R, 1R/19L)
 119.9 257.8 (Rwys 8L/26R, 8R/26L)
 LAS VEGAS DEP CON
 125.9 307.25



(JOHR1 .JOHR) 21056
 JOHR ONE DEPARTURE (RNAV) Departure Routes
 AT-652 (FAI)
 MC CARRAN INTL (LAS)
 LAS VEGAS, NEVADA

(CONTINUED ON FOLLOWING PAGE)

NOTE: Chart not to scale.

JOHKR ONE DEPARTURE (RNAV) Transition Routes

**TOP ALTITUDE:
FL190**

D-ATIS 132.4
 CLNC DEL 118.0
 CPDLC
 GND CON 121.1 270.8 E of 1R/19L
 121.9 254.3 W of 1R/19L
 LAS VEGAS TOWER 118.75 257.8 (Rwys 1L/19R, 1R/19L)
 119.9 257.8 (Rwys 8L/26R, 8R/26L)
 LAS VEGAS DEP CON 125.9 307.25

KENNO

FL250
*11000
327°
(36)

CAGEE

FL250
*7700
306°
(14)

BIKKR

FL210
*8700
307°
(10)

DEDPL

FL210
*9000
305°
(14)

GRYMZ

FL210
*8600
304°
(33)

JOHKR

NOTE: DME/DME/IRU or GPS required.
 NOTE: RNAV 1.
 NOTE: RADAR required.

(NARRATIVE ON FOLLOWING PAGE)

NOTE: Chart not to scale.

SW-4, 22 APR 2021 to 20 MAY 2021

SW-4, 22 APR 2021 to 20 MAY 2021



DEPARTURE ROUTE DESCRIPTION

TAKEOFF RUNWAYS 1L/R: Climb on heading 014° to 2682, then left turn direct BESSY at or above 5000, then on track 191° to HRRLY, then on track 190° to KWYYN, then on track 263° to cross RAWKK at or above 13000, then on track 263° to JOHKR, thence

TAKEOFF RUNWAY 8L: Climb on heading 079° to intercept course 090° to cross FLAAR at or above 6000, then on track 152° to cross HNIBL at or above 8000 and at or below 230K, then on track 211° to VMPRE, then on track 260° to JOHKR, thence

TAKEOFF RUNWAY 8R: Climb on heading 079° to 2682, then direct SCAAR, then on track 090° to cross FLAAR at or above 6000, then on track 152° to cross HNIBL at or above 8000 and at or below 230K, then on track 211° to VMPRE, then on track 260° to JOHKR, thence

TAKEOFF RUNWAYS 19L/R: Climb on heading 194° to 2682, then direct DEREW at or below 7000, then on track 188° to CARNG, then on track 218° to COMIC , then on track 224° to MGNT0, then on track 260° to cross KRUGR at or below 11000, then on track 260° to JOHKR, thence

TAKEOFF RUNWAY 26L: Climb on heading 259° to 2682, then direct SILTT, then on track 253° to cross RUDYY at or above 4000 and at or below 230K, then on track 189° to cross SELLZ at or below 8000, then on track 197° to MGNT0, then on track 260° to cross KRUGR at or below 11000, then on track 260° to JOHKR, thence

TAKEOFF RUNWAY 26R: Climb on heading 259° to intercept course 249° to cross RUDYY at or above 4000 and at or below 230K, then on track 189° to cross SELLZ at or below 8000, then on track 197° to MGNT0, then on track 260° to cross KRUGR at or below 11000, then on track 260° to JOHKR, thence

. . . . on (transition). Maintain FL190. Expect filed altitude 10 minutes after departure.

KENNO TRANSITION (JOHKR1.KENNO)

SW-4, 22 APR 2021 to 20 MAY 2021

SW-4, 22 APR 2021 to 20 MAY 2021