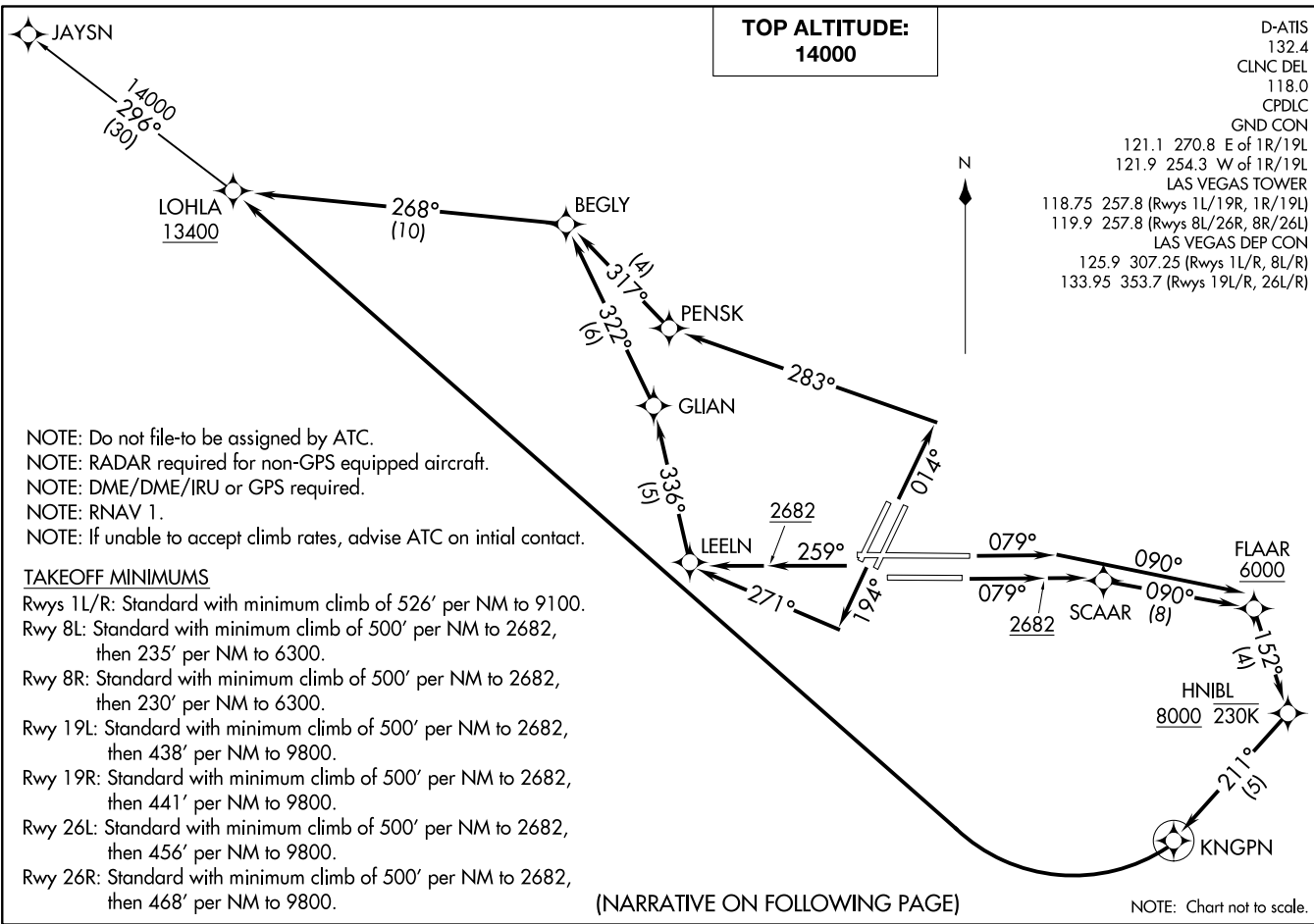


LOHIA ONE DEPARTURE (RNAV)
(LOHIA1 .LOHIA) 25FEB21

LAS VEGAS, NEVADA
MC CARRAN INTL (LAS)



(NARRATIVE ON FOLLOWING PAGE)

NOTE: Chart not to scale.



DEPARTURE ROUTE DESCRIPTION

TAKEOFF RUNWAYS 1L/R: Climb on heading 014° to intercept course 283° to PENSK, then on track 317° to BEGLY, then on track 268° to cross LOHLA at or above 13400, thence. . . .

TAKEOFF RUNWAY 8L: Climb on heading 079° to intercept course 090° to cross FLAAR at or above 6000, then on track 152° to cross HNIBL or above 8000 and at or below 230K, then on track 211° to KNGPN, then right turn direct LOHLA at or above 13400, thence. . . .

TAKEOFF RUNWAY 8R: Climb on heading 079° to 2682, then direct SCAAR, then on track 090° to cross FLAAR at or above 6000, then on track 152° to cross HNIBL or above 8000 and at or below 230K, then on track 211° to KNGPN, then right turn direct LOHLA at or above 13400, thence. . . .

TAKEOFF RUNWAYS 19L/R: Climb on heading 194° to intercept course 271° to LEELN, then on track 336° to GLIAN, then on track 322° to BEGLY, then on track 268° to cross LOHLA at or above 13400, thence. . . .

TAKEOFF RUNWAYS 26L/R: Climb on heading 259° to 2682, then direct LEELN, then on track 336° to GLIAN, then on track 322° to BEGLY, then on track 268° to cross LOHLA at or above 13400, thence. . . .

. . . . on (transition). Maintain 14000. Expect filed altitude 10 minutes after departure.

JAYSN TRANSITION (LOHLA1.JAYSN)

SW-4, 22 APR 2021 to 20 MAY 2021

SW-4, 22 APR 2021 to 20 MAY 2021