

(N11TZ1, N11TZ) 25FEB21

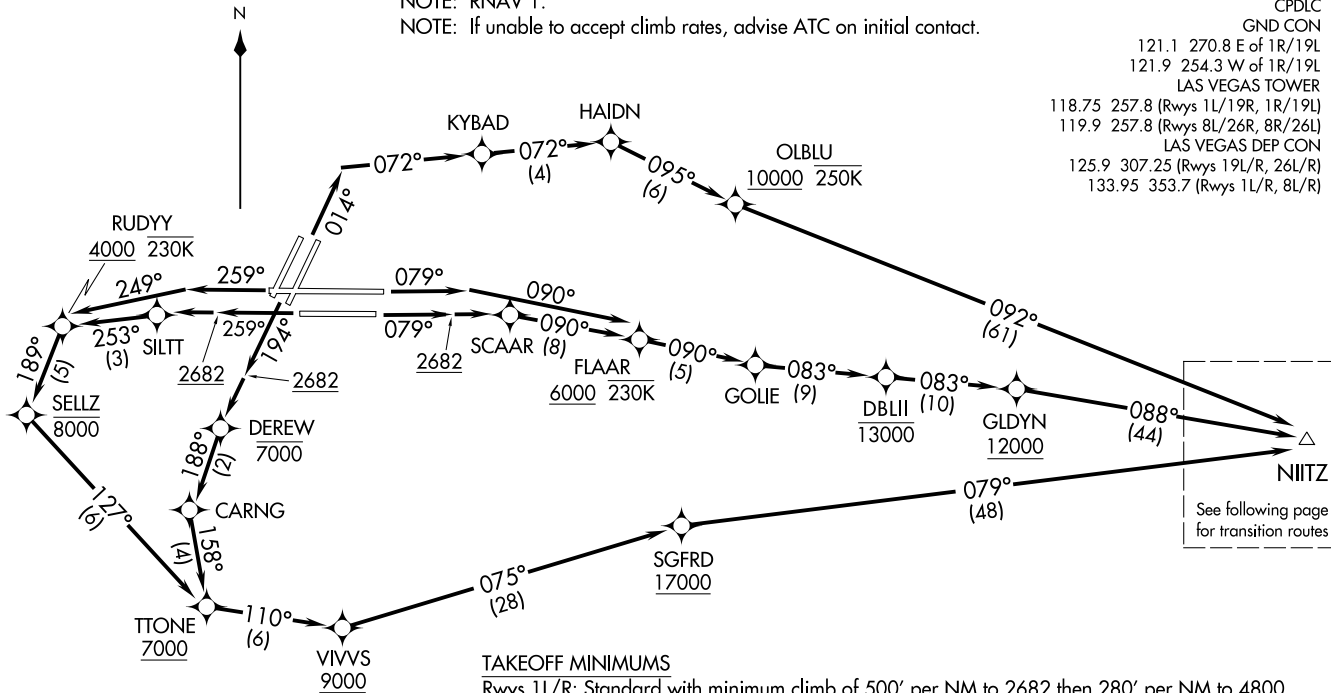
NIITZ ONE DEPARTURE (RNAV) Departure Routes

LAS VEGAS, NEVADA
MC CARRAN INTL (LAS)

**TOP ALTITUDE:
FL190**

NOTE: RADAR required for non-GPS equipped aircraft.
 NOTE: Turbojets only.
 NOTE: DME/DME/IRU or GPS required.
 NOTE: RNAV 1.
 NOTE: If unable to accept climb rates, advise ATC on initial contact.

D-ATIS
 132.4
 CLNC DEL
 118.0
 CPDLC
 GND CON
 121.1 270.8 E of 1R/19L
 121.9 254.3 W of 1R/19L
 LAS VEGAS TOWER
 118.75 257.8 (Rwys 1L/19R, 1R/19L)
 119.9 257.8 (Rwys 8L/26R, 8R/26L)
 LAS VEGAS DEP CON
 125.9 307.25 (Rwys 19L/R, 26L/R)
 133.95 353.7 (Rwys 1L/R, 8L/R)



NIITZ
 See following page
 for transition routes

TAKEOFF MINIMUMS

Rwys 1L/R: Standard with minimum climb of 500' per NM to 2682 then 280' per NM to 4800.
 Rwys 8L/R: Standard with minimum climb of 500' per NM to 2682.
 Rwys 19L/R: Standard with minimum climb of 500' per NM to 2682 then 270' per NM to 6200.
 Rwys 26L/R: Standard with minimum climb of 500' per NM to 2682 then 240' per NM to 5000.

NOTE: Chart not to scale.

(CONTINUED ON FOLLOWING PAGE)

(N11TZ1, N11TZ) 21056

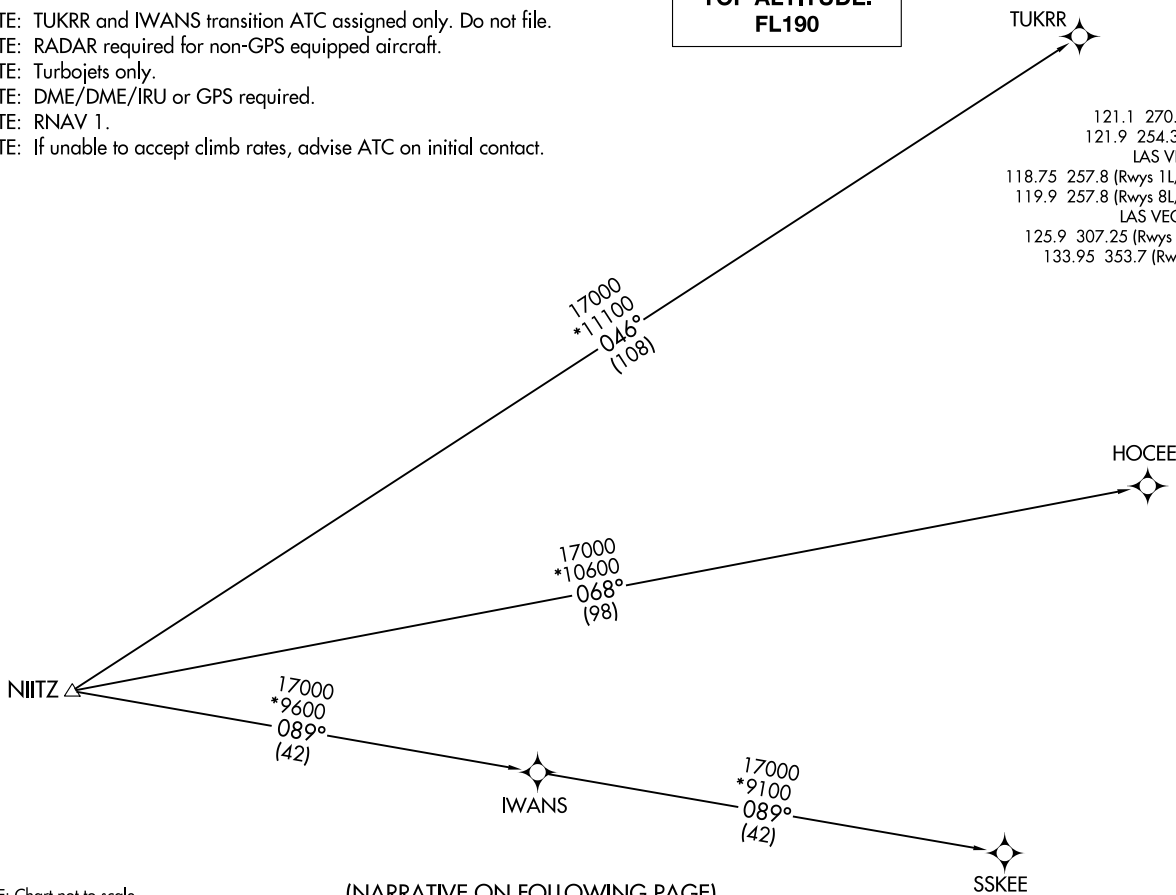
AL-652 (FAA)
 Departure Routes

MC CARRAN INTL (LAS)
 LAS VEGAS, NEVADA

**TOP ALTITUDE:
FL190**

- NOTE: TUKRR and IWANS transition ATC assigned only. Do not file.
- NOTE: RADAR required for non-GPS equipped aircraft.
- NOTE: Turbojets only.
- NOTE: DME/DME/IRU or GPS required.
- NOTE: RNAV 1.
- NOTE: If unable to accept climb rates, advise ATC on initial contact.

D-ATIS 132.4
 CLNC DEL 118.0
 CPDLC
 GND CON
 121.1 270.8 E of 1R/19L
 121.9 254.3 W of 1R/19L
 LAS VEGAS TOWER
 119.9 257.8 (Rwys 8L/26R, 8R/26L)
 LAS VEGAS DEP CON
 125.9 307.25 (Rwys 19L/R, 26L/R)
 133.95 353.7 (Rwys 1L/R, 8L/R)



NOTE: Chart not to scale.

(NARRATIVE ON FOLLOWING PAGE)

NIITZ ONE DEPARTURE (RNAV) Transition Routes
 (NIITZ1, NIITZ) 25FEB21
 LAS VEGAS, NEVADA
 MC CARRAN INTL (LAS)

(NIITZ1, NIITZ) 21056
 NIITZ ONE DEPARTURE (RNAV) Transition Routes
 AL-662 (FAA)
 MC CARRAN INTL (LAS)
 LAS VEGAS, NEVADA



DEPARTURE ROUTE DESCRIPTION

TAKEOFF RUNWAYS 1L/R: Climb on heading 014° to intercept course 072° to KYBAD, then on track 072° to HAIDN, then on track 095° to cross OLBLU at or above 10000 and at or below 250K, then on track 092° to NIITZ, thence

TAKEOFF RUNWAY 8L: Climb on heading 079° to intercept course 090° to cross FLAAR at or above 6000 and at or below 230K, then on track 090° to GOLIE, then on track 083° to cross DBLII at or below 13000, then on track 083° to cross GLDYN at or above 12000, then on track 088° to NIITZ, thence

TAKEOFF RUNWAY 8R: Climb on heading 079° to 2682, then direct SCAAR, then on track 090° to cross FLAAR at or above 6000 and at or below 230K, then on track 090° to GOLIE, then on track 083° to cross DBLII at or below 13000, then on track 083° to cross GLDYN at or above 12000, then on track 088° to NIITZ, thence

TAKEOFF RUNWAYS 19L/R: Climb on heading 194° to 2682, then direct DEREW to cross at or below 7000, then on track 188° to CARNG, then on track 158° to cross TTONE at or above 7000, then on track 110° to cross VIVVS at or above 9000, then on track 075° to cross SGFRD at or above 17000, then on track 079° to NIITZ, thence

TAKEOFF RUNWAY 26L: Climb on heading 259° to 2682, then direct SILTT, then on track 253° to cross RUDYY at or above 4000 and at or below 230K, then on track 189° to cross SELLZ at or below 8000, then on track 127° to cross TTONE at or above 7000, then on track 110° to cross VIVVS at or above 9000, then on track 075° to cross SGFRD at or above 17000, then on track 079° to NIITZ, thence

TAKEOFF RUNWAY 26R: Climb on heading 259° to intercept course 249° to cross RUDYY at or above 4000 and at or below 230K, then on track 189° to cross SELLZ at or below 8000, then on track 127° to cross TTONE at or above 7000, then on track 110° to cross VIVVS at or above 9000, then on track 075° to cross SGFRD at or above 17000, then on track 079° to NIITZ, thence

. . . . on (transition). Maintain 17000. Expect filed altitude 10 minutes after departure.

HOCEE TRANSITION (NIITZ1.HOCEE)

IWANS TRANSITION (NIITZ1.IWANS)

SSKEE TRANSITION (NIITZ1.SSKEE)

TUKRR TRANSITION (NIITZ1.TUKRR)

SW-4, 22 APR 2021 to 20 MAY 2021

SW-4, 22 APR 2021 to 20 MAY 2021