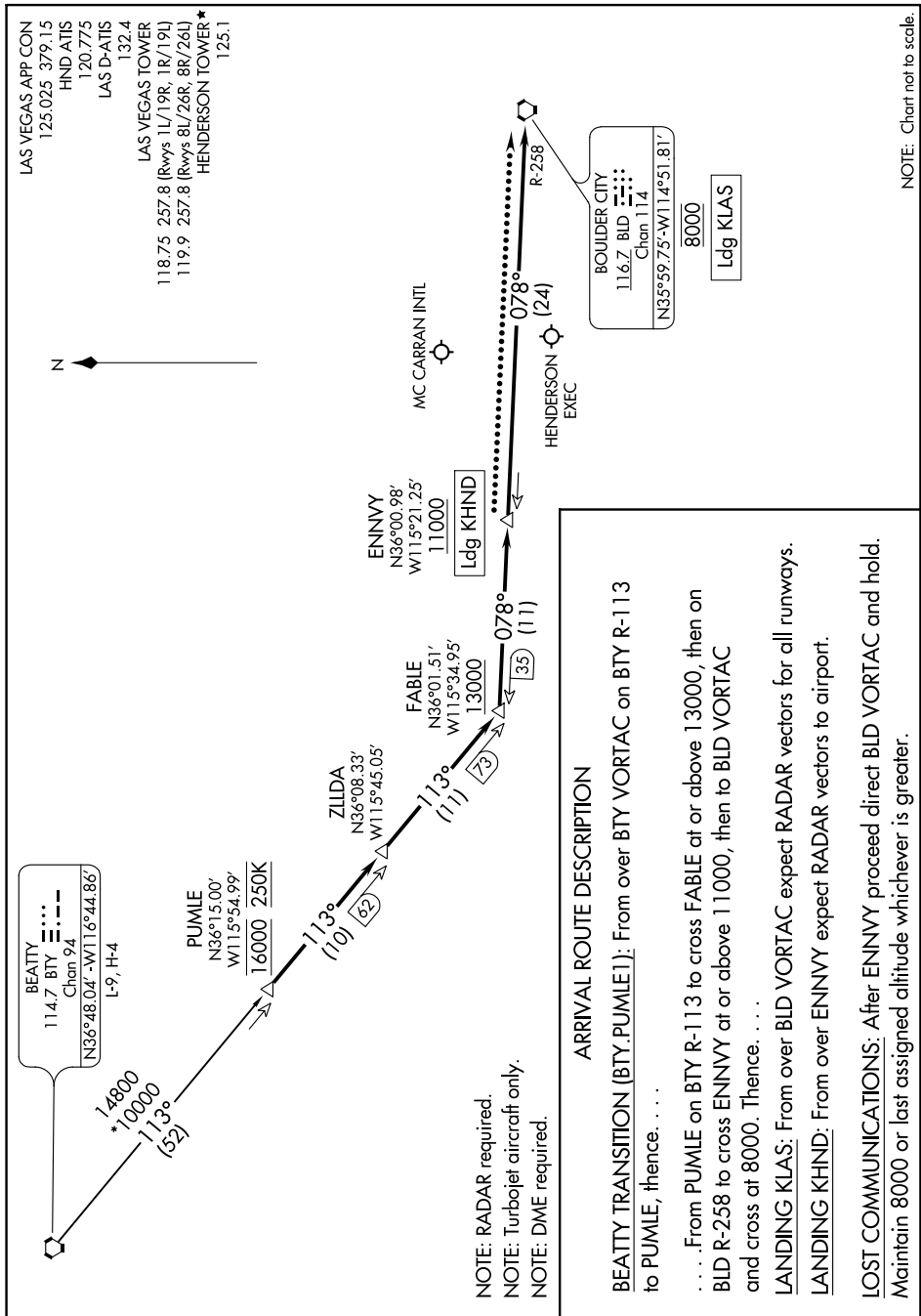


SW-4, 22 APR 2021 to 20 MAY 2021



NOTE: Chart not to scale.

**ARRIVAL ROUTE DESCRIPTION**

**BEATY TRANSITION (BTY.PUMLE1):** From over BTY VORTAC on BTY R-113 to PUMLE, thence. . . .

. . . . From PUMLE on BTY R-113 to cross FABLE at or above 13000, then on BLD R-258 to cross ENNVY at or above 11000, then to BLD VORTAC and cross at 8000. Thence. . . .

**LANDING KLAS:** From over BLD VORTAC expect RADAR vectors for all runways.

**LANDING KHND:** From over ENNVY expect RADAR vectors to airport.

**LOST COMMUNICATIONS:** After ENNVY proceed direct BLD VORTAC and hold. Maintain 8000 or last assigned altitude whichever is greater.

SW-4, 22 APR 2021 to 20 MAY 2021