

RKSTR ONE ARRIVAL (RNAV) (PEHTY, RKSTR1) 25FEB21

(PEHTY, RKSTR1) 21056
RKSTR ONE ARRIVAL (RNAV) Transition Routes

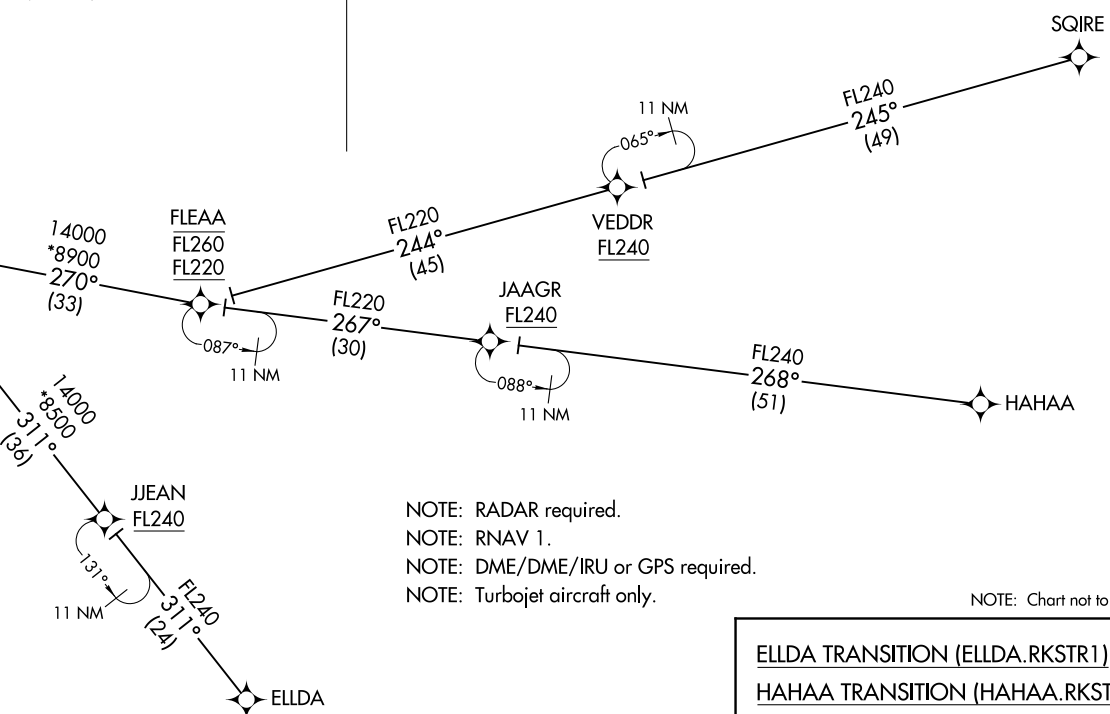
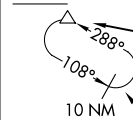
AL-662 (FAA)
MC CARRAN INTL (LAS)
LAS VEGAS, NEVADA

LAS VEGAS APP CON
125.6 282.2
D-ATIS
132.4
LAS VEGAS TOWER
118.75 257.8 (Rwys 1L/19R, 1R/19L)
119.9 257.8 (Rwys 8L/26R, 8R/26L)



See following page
for arrival routes.

PEHTY	
FL190	280K
14000	



- NOTE: RADAR required.
- NOTE: RNAV 1.
- NOTE: DME/DME/IRU or GPS required.
- NOTE: Turbojet aircraft only.

NOTE: Chart not to scale.

ELDA TRANSITION (ELDA.RKSTR1)
HAHA TRANSITION (HAHA.RKSTR1)
SQUIRE TRANSITION (SQUIRE.RKSTR1)

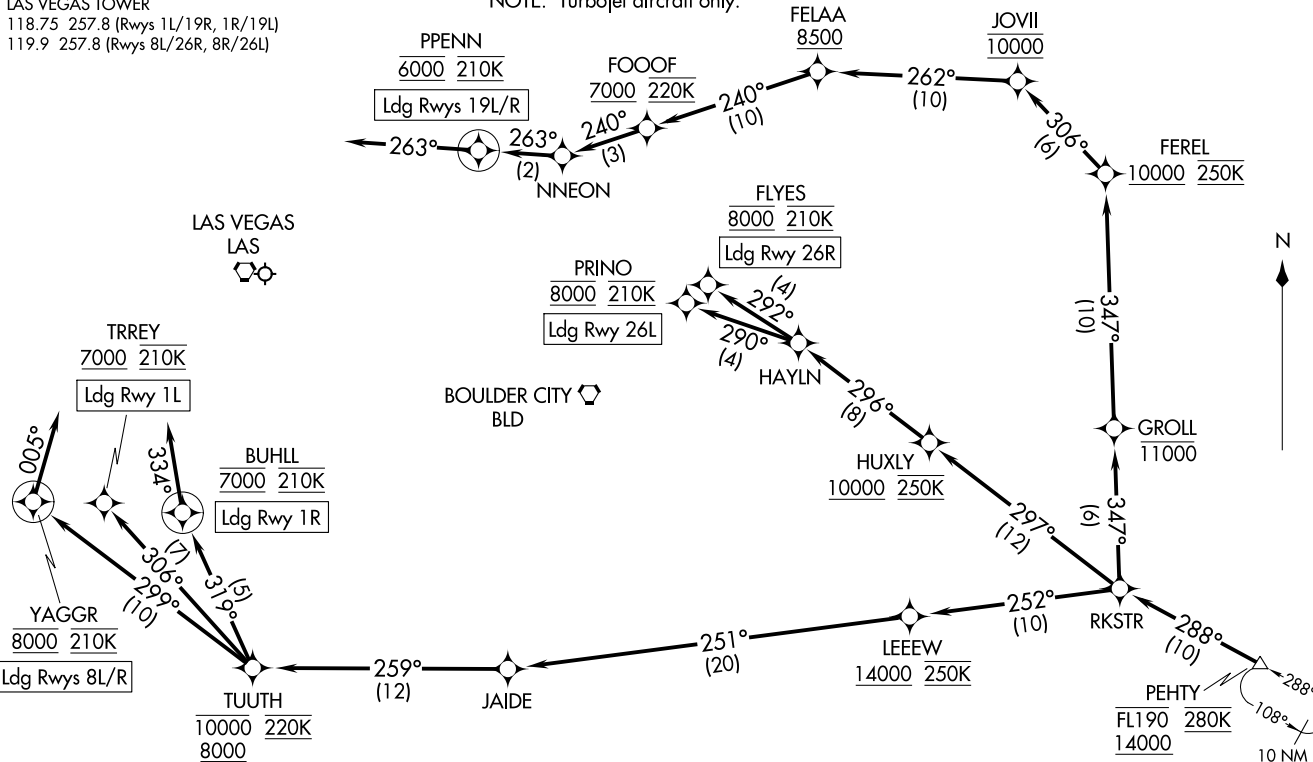
(CONTINUED ON FOLLOWING PAGE)

LAS VEGAS, NEVADA
MC CARRAN INTL (LAS)

RKSTR ONE ARRIVAL (RNAV) Arrival Routes
 (PEHTY, RKSTR1) 25FEB21

LAS VEGAS APP CON
 125.6 282.2
 D-ATIS
 132.4
 LAS VEGAS TOWER
 118.75 257.8 (Rwys 1L/19R, 1R/19L)
 119.9 257.8 (Rwys 8L/26R, 8R/26L)

NOTE: RADAR required.
 NOTE: RNAV 1.
 NOTE: DME/DME/IRU or GPS required.
 NOTE: Turbojet aircraft only.



(NARRATIVE ON FOLLOWING PAGE)

NOTE: Chart not to scale.

(PEHTY, RKSTR1) 21056
 AL-662 (FAA)
 MC CARRAN INTL (LAS)
 LAS VEGAS, NEVADA
 Arrival Routes

ARRIVAL ROUTE DESCRIPTION

From PEHTY on track 288° to RKSTR.

LANDING RUNWAY 1L: From RKSTR on track 252° to cross LEEEW at or above 14000 and at 250K, then on track 251° to JAIDE, then on track 259° to cross TUUTH between 8000 and 10000 and at 220K, then on track 306° to cross TRREY at or above 7000 and at 210K. Expect ILS or LOC RWY 1L approach.

LANDING RUNWAY 1R: From RKSTR on track 252° to cross LEEEW at or above 14000 and at 250K, then on track 251° to JAIDE, then on track 259° to cross TUUTH between 8000 and 10000 and at 220K, then on track 319° to cross BUHLL at 7000 and at 210K, then on track 334°. Expect RADAR vectors to final approach course.

LANDING RUNWAYS 8L/R: From RKSTR on track 252° to cross LEEEW at or above 14000 and at 250K, then on track 251° to JAIDE, then on track 259° to cross TUUTH between 8000 and 10000 and at 220K, then on track 299° to cross YAGGR at 8000 and at 210K, then on track 005°. Expect RADAR vectors to final approach course.

LANDING RUNWAYS 19L/R: From RKSTR on track 347° to cross GROLL at or below 11000, then on track 347° to cross FEREL at or above 10000 and at 250K, then on track 306° to cross JOVII at 10000, then on track 262° to cross FELAA at or above 8500, then on track 240° to cross FOOOF at or above 7000 and at 220K, then on track 240° to NNEON, then on track 263° to cross PPENN at 6000 and at 210K, then on track 263°. Expect RADAR vectors to final approach course.

LANDING RUNWAY 26L: From RKSTR on track 297° to cross HUXLY at or above 10000 and at 250K, then on track 296° to HAYLN, then on track 290° to cross PRINO at 8000 and at 210K. Expect ILS or LOC RWY 26L approach.

LANDING RUNWAY 26R: From RKSTR on track 297° to cross HUXLY at or above 10000 and at 250K, then on track 296° to HAYLN, then on track 292° to cross FLYES at 8000 and at 210K. Expect ILS or LOC RWY 26R approach.

LOST COMMUNICATIONS

LANDING RUNWAY 1L: At TRREY execute ILS or LOC RWY 1L approach.

LANDING RUNWAY 1R: At BUHLL execute RNAV (GPS) RWY 1R approach.

LANDING RUNWAY 8R: at YAGGR execute RNAV (RNP) RWY 8R approach, if unable, proceed visually via last track to intercept the final approach course; if unable, maintain 7000 direct LAS VORTAC then direct BLD VORTAC and execute ILS or LOC RWY 26L approach.

LANDING RUNWAY 19L: at PPENN execute RNAV (RNP) RWY 19L approach, if unable proceed visually via last track to intercept the final approach course; if unable, maintain 7000 proceed direct LAS VORTAC then direct BLD VORTAC and execute ILS or LOC RWY 26L approach.

LANDING RUNWAY 26L: At PRINO execute ILS or LOC RWY 26L approach.

LANDING RUNWAY 26R: At FLYES execute ILS or LOC RWY 26R approach.

SW-4, 22 APR 2021 to 20 MAY 2021

SW-4, 22 APR 2021 to 20 MAY 2021