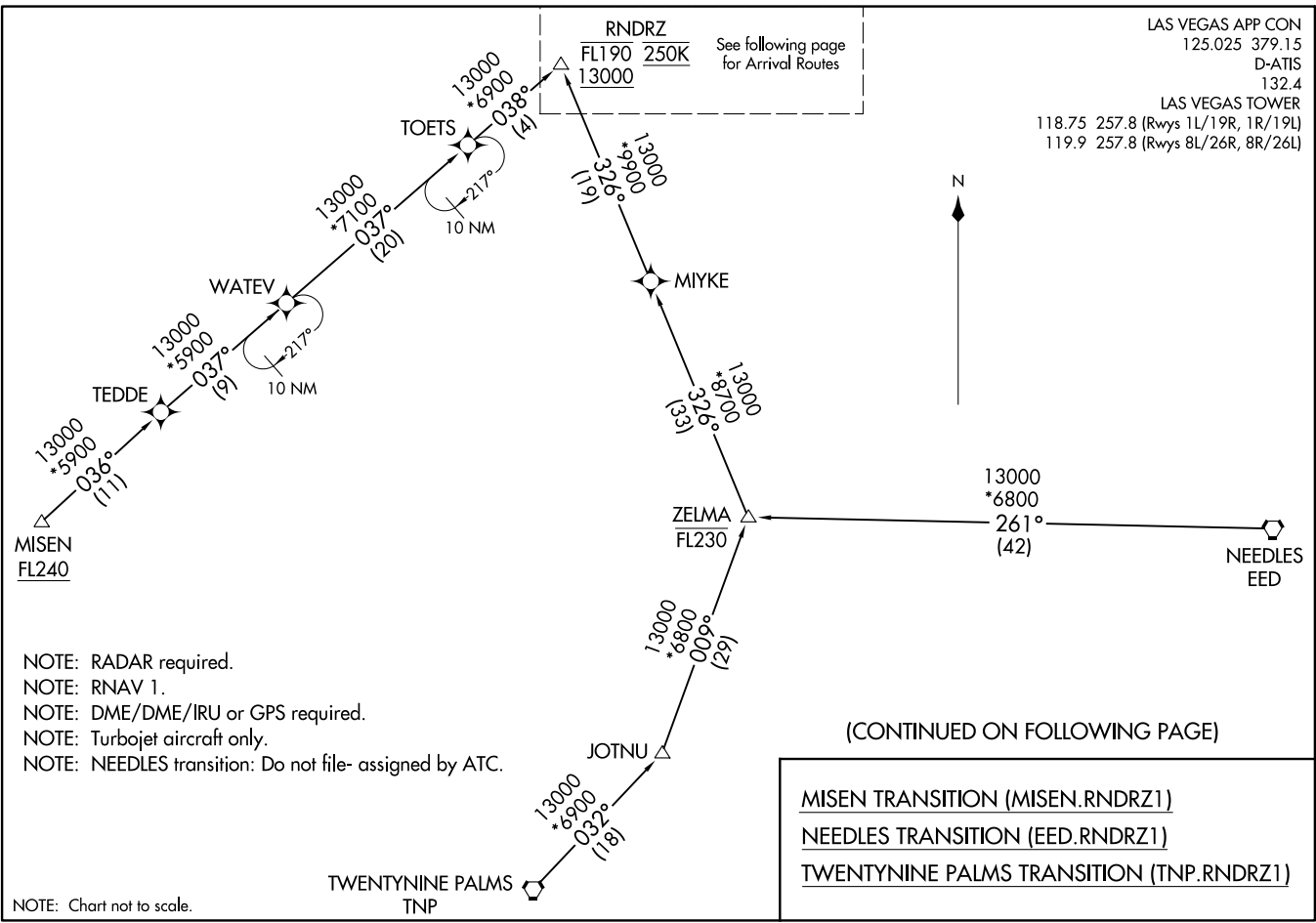


RNDRZ ONE ARRIVAL (RNAV) Transition Routes
(RNDRZ.RNDRZ1) 25FEB21

LAS VEGAS, NEVADA
MC CARRAN INTL (LAS)



- NOTE: RADAR required.
- NOTE: RNAV 1.
- NOTE: DME/DME/IRU or GPS required.
- NOTE: Turbojet aircraft only.
- NOTE: NEEDLES transition: Do not file- assigned by ATC.

NOTE: Chart not to scale.

RNDRZ
FL190 250K
13000

See following page
for Arrival Routes

LAS VEGAS APP CON
125.025 379.15
D-ATIS
132.4

LAS VEGAS TOWER
118.75 257.8 (Rwys 1L/19R, 1R/19L)
119.9 257.8 (Rwys 8L/26R, 8R/26L)



(CONTINUED ON FOLLOWING PAGE)

MISEN TRANSITION (MISEN.RNDRZ1)
NEEDLES TRANSITION (EED.RNDRZ1)
TWENTYNINE PALMS TRANSITION (TNP.RNDRZ1)

(RNDRZ.RNDRZ1) 21056
RNDRZ ONE ARRIVAL (RNAV) Transition Routes
AL-662 (FAA)

MC CARRAN INTL (LAS)
LAS VEGAS, NEVADA

LAS VEGAS APP CON
125.025 379.15
D-ATIS
132.4
LAS VEGAS TOWER
118.75 257.8 (Rwys 1L/19R, 1R/19L)
119.9 257.8 (Rwys 8L/26R, 8R/26L)

LAS VEGAS LAS

ENNVY
11000

083°
(12)

083°
(2)

079°
(2)

079°

REDQN
9000 210K

TWAFB
8000 210K

BERBN
8000 210K

BOULDER CITY
BLD

Ldg Rwys 19L/R, 26L/R

BUETY
12500

YAGGR
8000 210K

Ldg Rwys 8L/R

ROAMN
8000 210K

Ldg Rwys 1L/R

GRMMA

BAUUM

037°
(12)

048°
(7)

RUMLY
10000

048°
(12)

RNDRZ
FL190 250K
13000



(RNDRZ.RNDRZ1) 21056
RNDRZ ONE ARRIVAL (RNAV)

Arrival Routes
Alt: 662 (FAA)

MC CARRAN INTL (LAS)
LAS VEGAS, NEVADA

- NOTE: RADAR required.
- NOTE: RNAV 1.
- NOTE: DME/DME/IRU or GPS required.
- NOTE: Turbojet aircraft only.

(NARRATIVE ON FOLLOWING PAGE)

NOTE: Chart not to scale.

RNDRZ ONE ARRIVAL (RNAV) Arrival Routes
(RNDRZ.RNDRZ1) 25FEB21

LAS VEGAS, NEVADA
MC CARRAN INTL (LAS)

ARRIVAL ROUTE DESCRIPTION

LANDING RUNWAYS 1L/R: From RNRZ on track 048° to cross RUMLY at or above 10000, then on track 048° to BAUMM, then on track 030° to cross ROAMN at 8000 and at 210K, then on track 030°. Expect RADAR vectors to final approach course.

LANDING RUNWAYS 8L/R: From RNRZ on track 048° to cross RUMLY at or above 10000, then on track 048° to BAUMM, then on track 006° to cross YAGGR at 8000 and at 210K, then on heading 005° or as assigned by ATC. Expect RADAR vectors to final approach course.

LANDING RUNWAYS 19L/R, 26L/R: From RNRZ on track 037° to GRMMA, then on track 019° to cross BUETY at or above 12500, then on track 019° to cross ENNVY at or above 11000, then on track 083° to cross REDQN at or above 9000 and at 210K, then on track 083° to TWAFL, then on track 079° to cross BERBN at 8000 and at 210K, then on track 079°. Expect RADAR vectors to final approach course.

LOST COMMUNICATIONS

LANDING RUNWAY 1L: At ROAMN execute ILS or LOC RWY 1L approach.

LANDING RUNWAY 8R: at YAGGR execute RNAV (RNP) RWY 8R approach, if unable, proceed visually via last track to intercept the final approach course; if unable, maintain 7000 direct LAS VORTAC then direct BLD VORTAC and execute ILS or LOC RWY 26L approach.

LANDING RUNWAY 26L: At BERBN execute ILS or LOC RWY 26L approach.

LANDING RUNWAY 26R: At BERBN execute ILS or LOC RWY 26R approach.

SW-4, 22 APR 2021 to 20 MAY 2021

SW-4, 22 APR 2021 to 20 MAY 2021