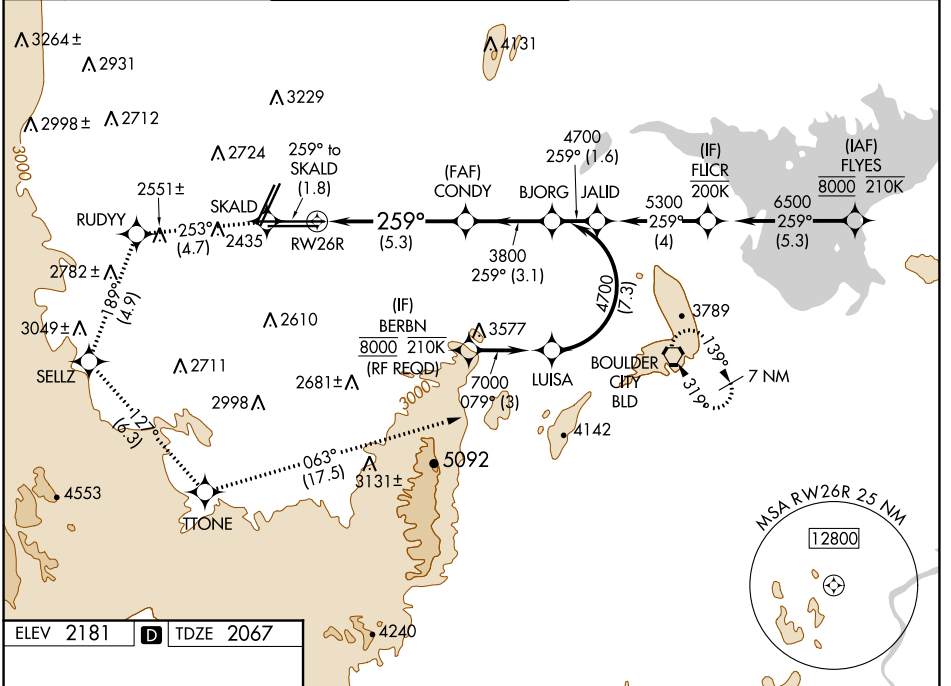


APP CRS	Rwy Idg	<b>12638</b>
<b>259°</b>	TDZE	<b>2067</b>
	Apt Elev	<b>2181</b>

# RNAV (RNP) RWY 26R

MC CARRAN INTL (LAS)

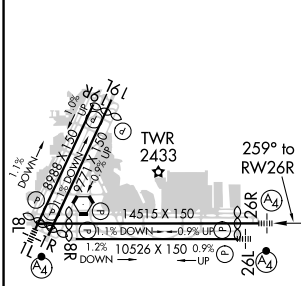
RNP AR APCH.		MALS	MISSED APPROACH: Climb to 7000 on the RNAV missed approach route to BLD VORTAC and hold. * Missed approach requires minimum climb of 235 feet per NM to 3200.			
For uncompensated Baro-VNAV systems, procedure NA below 0°C or above 54°C.		 				
D-ATIS	LAS VEGAS APP CON	LAS VEGAS TOWER		GND CON	CLNC DEL	CPDLC
<b>132.4</b>	<b>125.025 379.15</b> (West) <b>125.6 282.2</b> (East)	<b>118.75 257.8</b> (Rwy 1L/19R, 1R/19L) <b>119.9 257.8</b> (Rwy 8L/26R, 8R/26L)		<b>121.1 270.8</b> E of 1R/19L <b>121.9 254.3</b> W of 1R/19L	<b>118.0</b>	



SW-4, 22 APR 2021 to 20 MAY 2021

SW-4, 22 APR 2021 to 20 MAY 2021

ELEV 2181	<b>D</b>	TDZE 2067
-----------	----------	-----------



7000	SKALD	RUDYY	SELTZ	TTONE	BLD
↑	◆	tr 253° ◆	tr 189° ◆	tr 127° ◆	tr 063° ◆
fr 259°					
VGSI and RNAV glidepath not coincident (VGSI Angle 3.00/TCH 84).					
See planview for multiple IF locations.					
	CONDY	BJORG			
	3800	4700			
	RW26R	3800			
		259°			
		3800			
			GP 3.00°		
			TCH 60		
			-5.3 NM      3.1 NM		
CATEGORY	A	B	C	D	
RNP 0.30 DA*	2457-7/8		390 (300-7/8)		
RNP 0.30 DA	2507-1		440 (400-1)		

MIRL Rwy 1R-19L  
REIL Rws 1R, 8R, 19L and 19R  
HIRL Rws 1L-19R, 8L-26R and 8R-26L

**AUTHORIZATION REQUIRED**