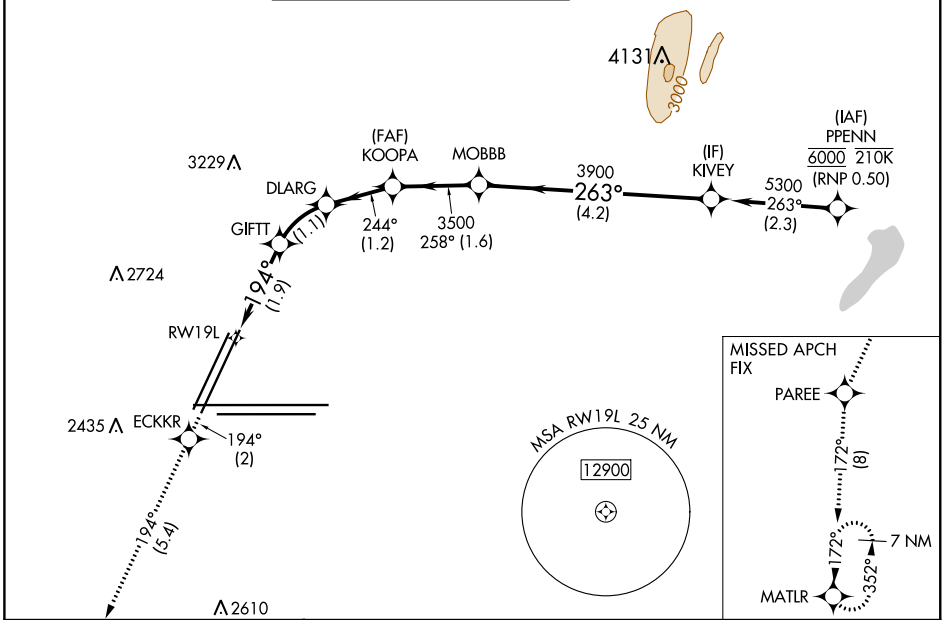


APP CRS	Rwy Idg	<b>8808</b>
<b>194°</b>	TDZE	<b>2112</b>
	Apt Elev	<b>2181</b>

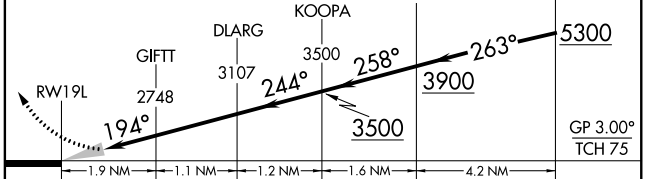
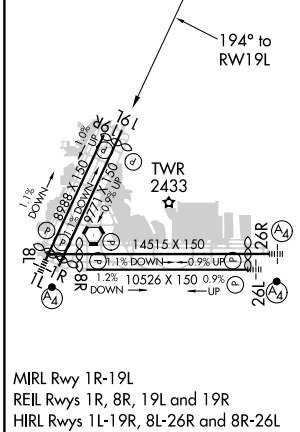
# RNAV (RNP) Z RWY 19L

MC CARRAN INTL (LAS)

RNP AR APCH. RF required.		MISSED APPROACH: Climb to 7000 on the RNAV missed approach route to MATLR and hold, continue climb-in-hold to 7000. *Missed approach requires minimum climb of 225 feet per NM to 5000.			
▽ For uncompensated Baro-VNAV systems, procedure NA below 0°C or above 54°C. Missed approach requires RNP less than 1.0.					
D-ATIS	LAS VEGAS APP CON	LAS VEGAS TOWER		GND CON	CLNC DEL
<b>132.4</b>	<b>125.025 379.15</b> (West) <b>125.6 282.2</b> (East)	<b>118.75 257.8</b> (Rwy 1L/19R, 1R/19L) <b>119.9 257.8</b> (Rwy 8L/26R, 8R/26L)		<b>121.1 270.8</b> E of 1R/19L <b>121.9 254.3</b> W of 1R/19L	<b>118.0</b>



ELEV 2181	TDZE 2112	7000	ECKKR	PAR EE	MATLR
		↑	tr 194°	tr 194°	tr 172°



CATEGORY	A	B	C	D
RNP 0.10 DA*		2470-1	358 (300-1)	
RNP 0.20 DA*		2488-1	376 (400-1)	
RNP 0.30 DA*		2512-1½	400 (400-1½)	
RNP 0.30 DA		2582-1¾	470 (500-1¾)	