

LOC I-OSH <b>110.5</b>	APP CRS <b>004°</b>	Rwy Idg <b>8002</b>
		TDZE <b>808</b>
		Apt Elev <b>808</b>

# ILS or LOC RWY 36

WITTMAN RGNL (OSH)

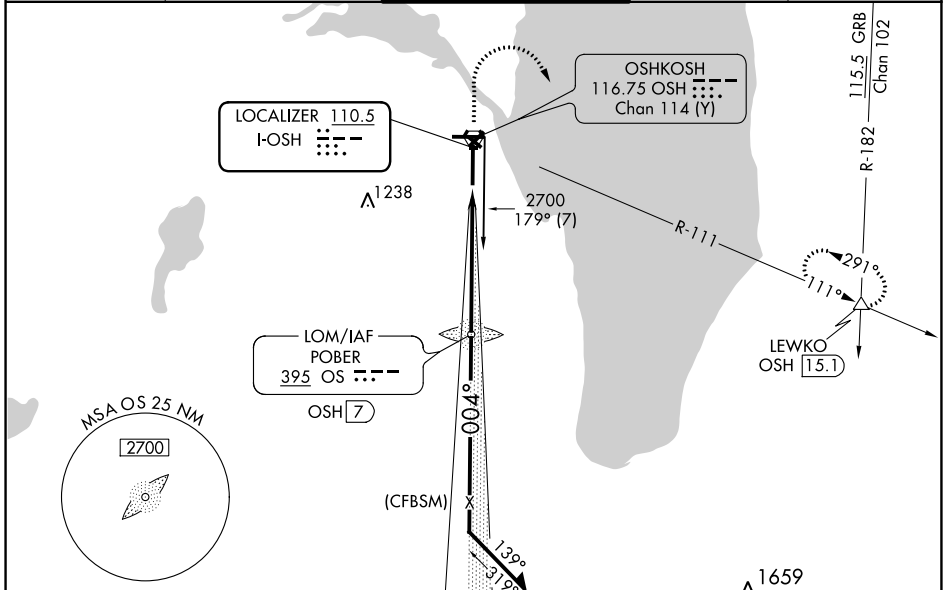
**⚠** When local altimeter setting not received, use Fond Du Lac altimeter setting and increase DA 31 feet and all MDA 40 feet; increase S-LOC 36 Cat C/D and Circling Cat C/D visibilities ¼ mile. For inop MALSRL when using Fond Du Lac altimeter setting, increase S-LOC 36 Cat C/D visibility to 1½ mile. Circling to Rwy 5, 23, and 31 NA at night.  
**\*** RVR 1800 authorized with the use of FD or AP or HUD to DA, NA when using Fond Du Lac altimeter setting.

MALSRL



**MISSED APPROACH:** Climb to 1300 then climbing right turn to 3000 on OSH R-111 to LEWKO INT/OSH 15 DME and hold.

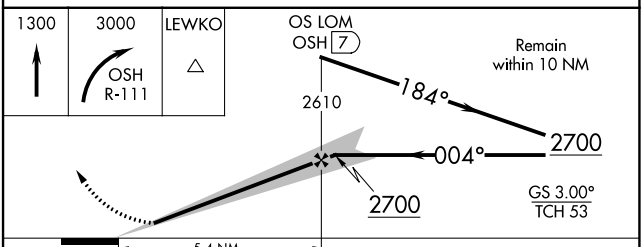
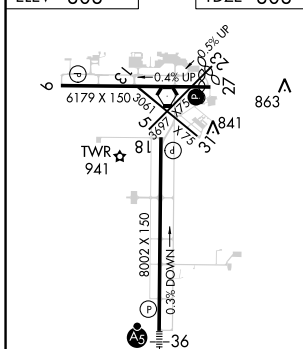
ATIS <b>125.9</b>	MILWAUKEE APP CON <b>127.0 263.075</b>	OSHKOSH TOWER ★ <b>118.5 (CTAF) 290.9</b>	GND CON <b>132.3</b>	UNICOM <b>122.95</b>
----------------------	-------------------------------------------	----------------------------------------------	-------------------------	-------------------------



EC-3, 22 APR 2021 to 20 MAY 2021

EC-3, 22 APR 2021 to 20 MAY 2021

ELEV <b>808</b>	TDZE <b>808</b>
-----------------	-----------------



REIL Rws 18 and 27	004° 5.4 NM from FAF			
HIRL Rws 9-27 and 18-36				
FAF to MAP 5.4 NM				
Knots	60	90	120	150
Min:Sec	5:24	3:36	2:42	2:10
	180			
	1:48			
CIRCLING	1340-1	532 (600-1)	1360-1½	1440-2
			552 (600-½)	632 (700-2)